



4 Yew Tree Mews Church Street, Ducklington



4 Yew Tree Mews, Church Street

A beautifully unique former dairy located in a popular village location offering an abundance of character features including original beams, exposed stone walls, a fireplace and two sunken wells.

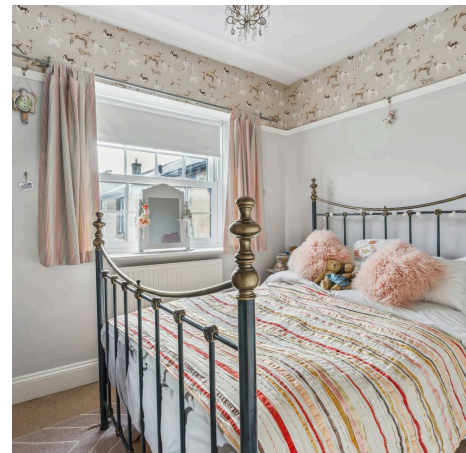
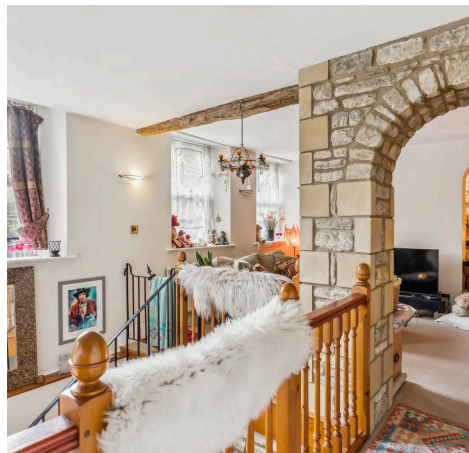
Council Tax band: E

Tenure: Freehold

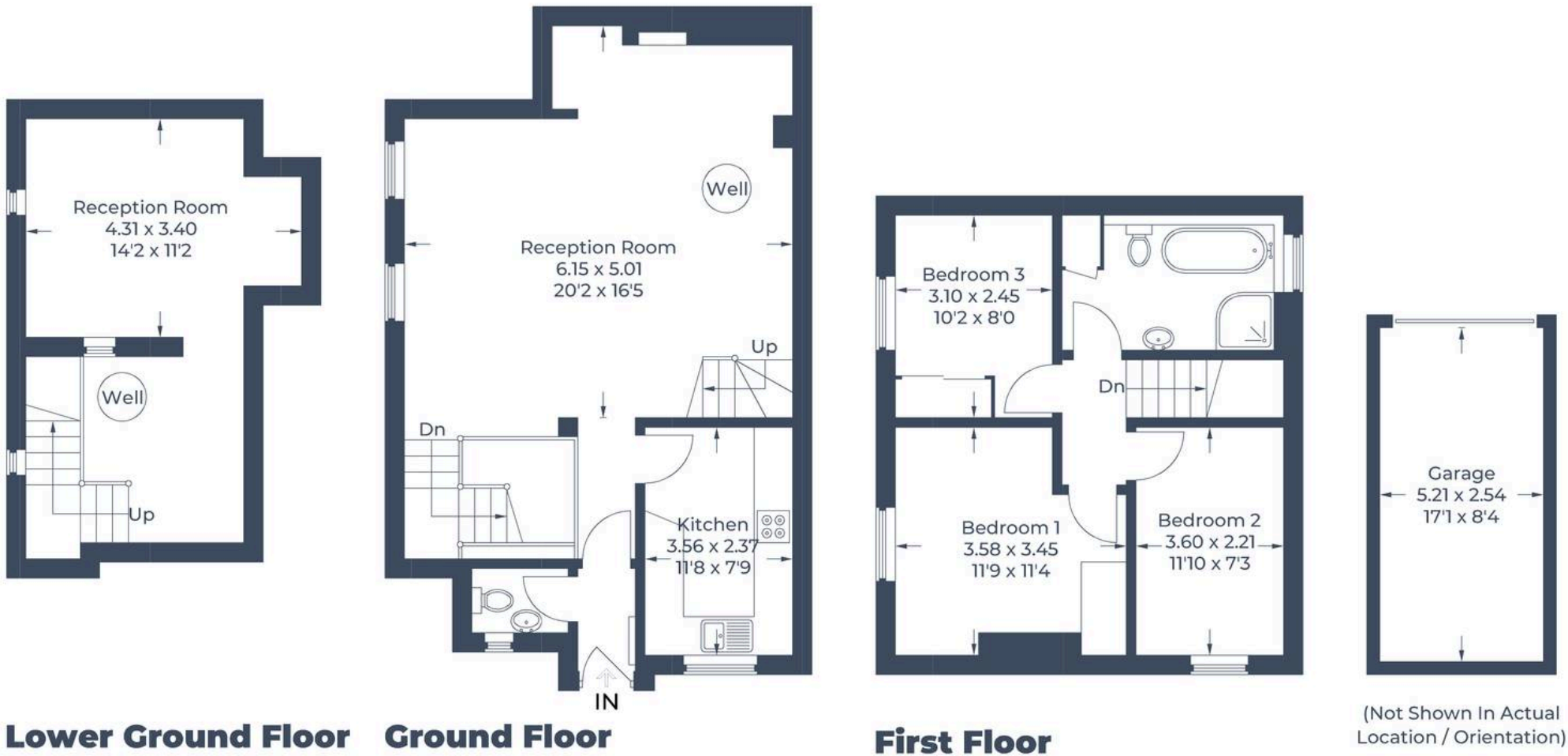
EPC Energy Efficiency Rating: D

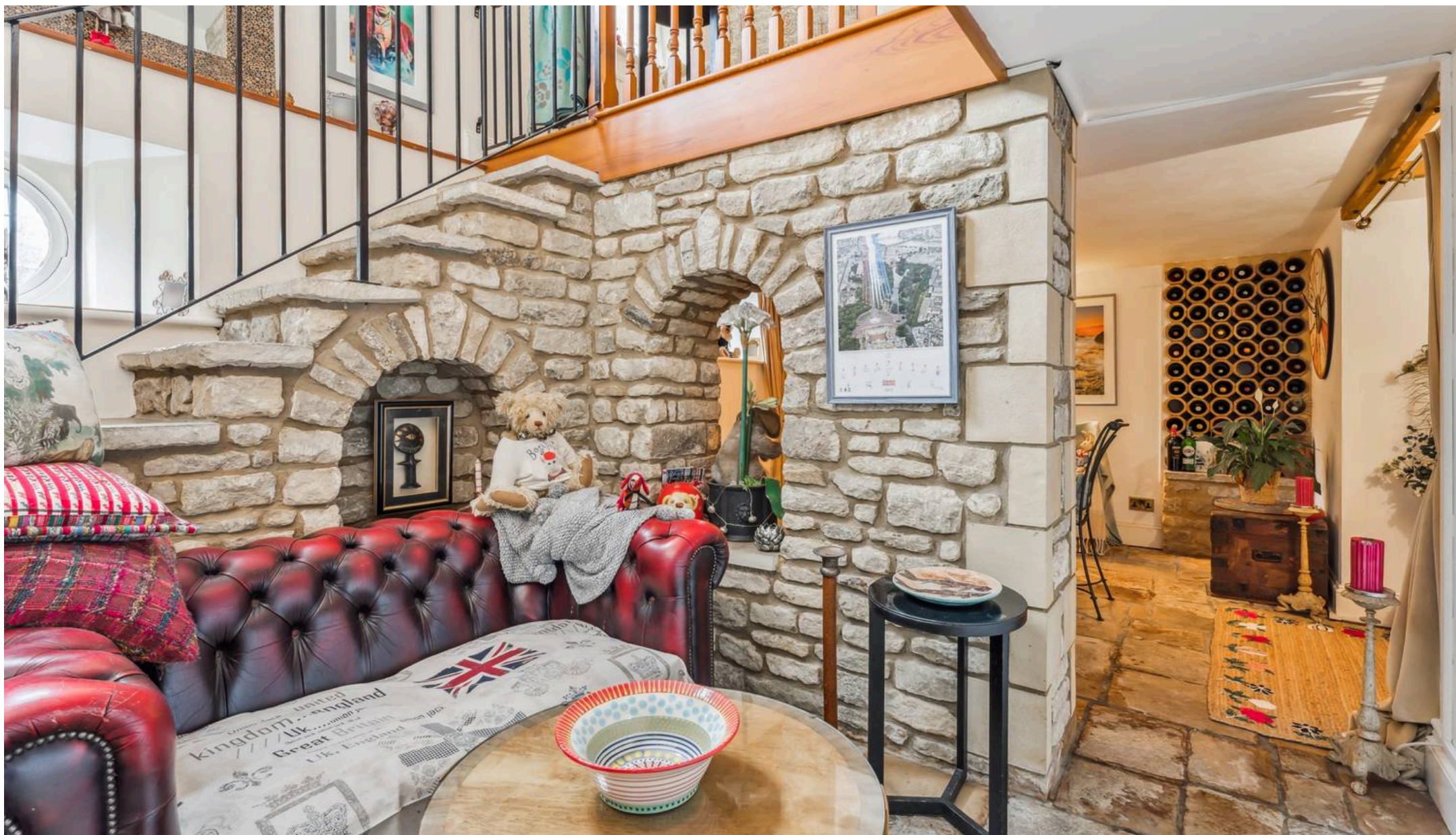
EPC Environmental Impact Rating: E

- Beautifully unique former dairy.
- Popular village location.
- Character features including original beams, exposed stone walls, two sunken wells and a fireplace.
- Garage and allocated parking space.
- Communal garden.
- Over 1200sqft of living space arranged across three levels.



Approximate Gross Internal Area
 Lower Ground Floor = 24.2 sq m / 260 sq ft
 Ground Floor = 54.1 sq m / 582 sq ft
 First Floor = 41.4 sq m / 446 sq ft
 Garage = 13.3 sq m / 143 sq ft
 Total = 133.0 sq m / 1,431 sq ft





Simpsons Witney Branch

4 Langdale Court Witney, Oxfordshire - OX28 6AD

01993 835030 • witney@simpsonsproperty.com • www.simpsonsproperty.com/