



17 Lupin Lane, Carterton



17 Lupin Lane

A neatly presented semi-detached home located in a popular part of Carterton on the Shilton Park development with an array of local amenities situated within walking distance.

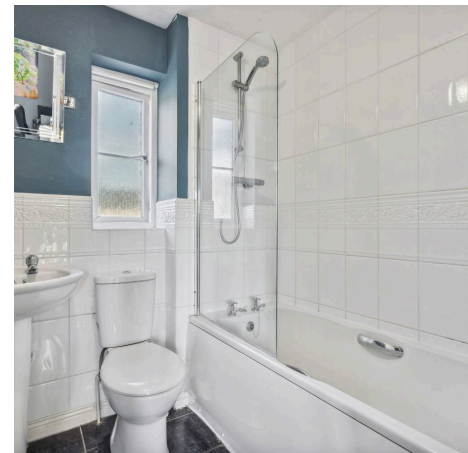
Council Tax band: C

Tenure: Freehold

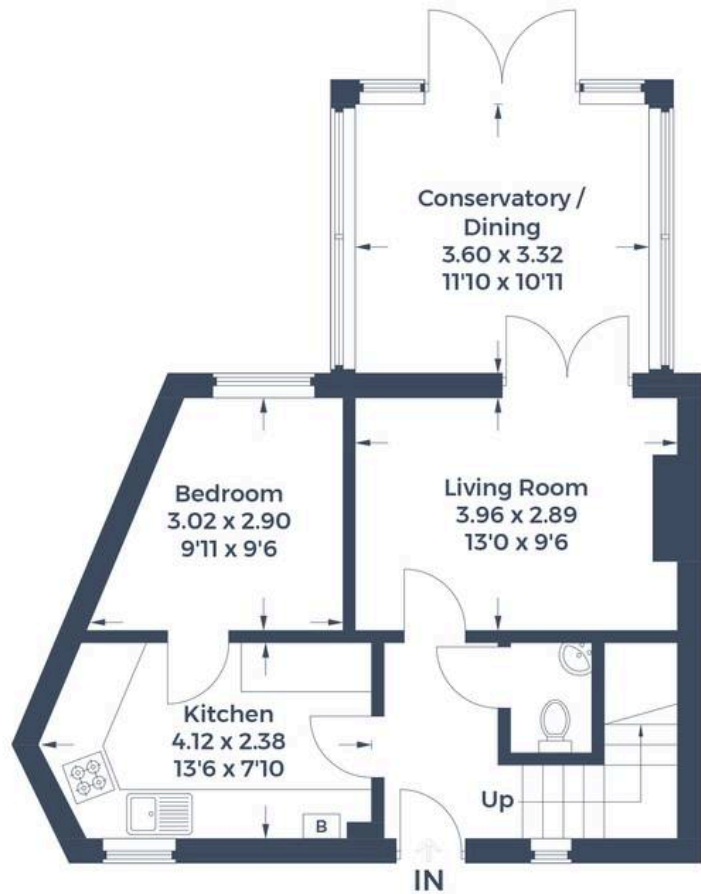
EPC Energy Efficiency Rating: C

EPC Environmental Impact Rating: C

- A neatly presented three/four-bedroom semi-detached home located on the popular Shilton Park within walking distance of all local amenities.
- Garage and off-street parking.
- Ground floor bedroom which could also be used as an office, snug or playroom.
- Conservatory with doors leading to garden (low maintenance garden completed by the current owners).
- Good family bathroom.
- Updated modern kitchen with double ovens.



Approximate Gross Internal Area
 Ground Floor = 51.6 sq m / 555 sq ft
 First Floor = 38.8 sq m / 418 sq ft
 Garage = 12.7 sq m / 137 sq ft
 Total = 102.1 sq m / 1,110 sq ft



Ground Floor



First Floor



(Not Shown In Actual Location / Orientation)

This plan is for layout guidance only. Not drawn to scale unless stated. Windows and door openings are approximate. Whilst every care is taken in the preparation of this plan, please check all dimensions, shapes and compass bearings before making any decisions reliant upon them.



Simpsons Witney Branch

4 Langdale Court Witney, Oxfordshire - OX28 6AD

01993 835030 • witney@simpsonsproperty.com • www.simpsonsproperty.com/