



7 Blake Crescent, Minster Lovell





## 7 Blake Crescent

Offered to market with the certainty of no onward chain is this delightful four bedroom detached home located on a highly sought after development in Minster Lovell, built by Bovis Homes.

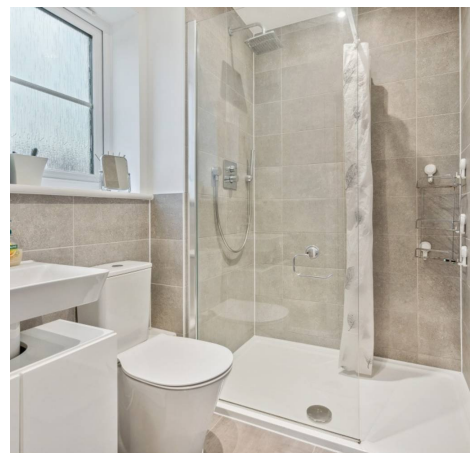
Council Tax band: E

Tenure: Freehold

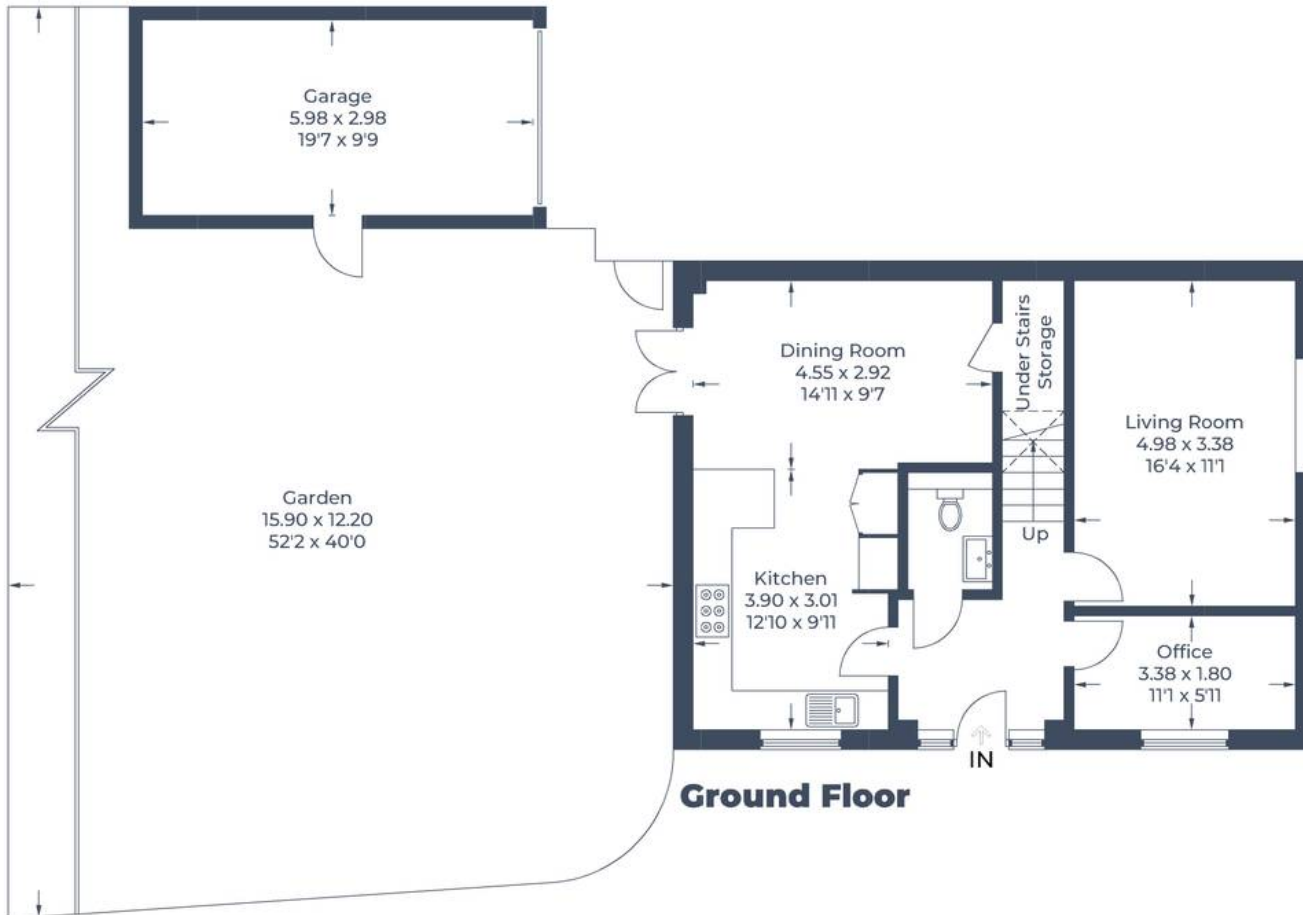
EPC Energy Efficiency Rating: B

EPC Environmental Impact Rating: B

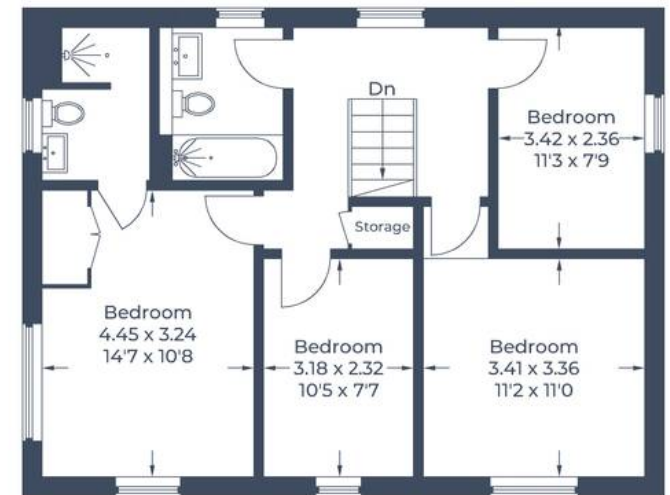
- Offered to market with the certainty of no onward chain.
- A fabulous four bedroom detached home located in a peaceful end of cul-de-sac location with stunning countryside views to the front and side of the home.
- Open plan kitchen/dining room with fully integrated appliances including double ovens, 8 ring induction hob and fridge/freezer.
- Four double bedrooms, master bedroom with built in wardrobe and stylish ensuite.
- Spacious sitting room and separate study.
- Single garage and driveway parking for two to three vehicles.



Approximate Gross Internal Area  
Ground Floor = 64.1 sq m / 690 sq ft  
First Floor = 63.8 sq m / 687 sq ft  
Garage = 18.0 sq m / 194 sq ft  
Total = 145.9 sq m / 1571 sq ft



**Ground Floor**



**First Floor**

Illustration for identification purposes only,  
measurements are approximate, not to scale.  
© CJ Property Marketing Produced for Simpsons





## Simpsons Witney Branch

4 Langdale Court Witney, Oxfordshire - OX28 6AD

01993 835030 • [witney@simpsonsproperty.com](mailto:witney@simpsonsproperty.com) • [www.simpsonsproperty.com/](http://www.simpsonsproperty.com/)