



38 Heyford Close, Standlake

Guide Price £365,000



38 Heyford Close

We are pleased to bring to market this beautifully presented three/four bedroom semi-detached bungalow located in a cul-de-sac position within the popular village of Standlake.

Council Tax band: C

Tenure: Freehold

EPC Energy Efficiency Rating: C

EPC Environmental Impact Rating: E

- A beautifully presented three/four bedroom semi-detached home located in an enviable cul-de-sac location within the popular village of Standlake.
- Bright and spacious open plan kitchen/dining/living room.
- Garage and garden office.
- Contemporary bathroom with shower and full height tiling.
- Off street parking for multiple vehicles.
- The village offers an array of amenities including a church, pub and village store.



Approximate Gross Internal Area= 89.4 sq m / 962 sq ft
Outbuildings = 24.3 sq m / 261 sq ft
Total = 113.7 sq m / 1223 sq ft

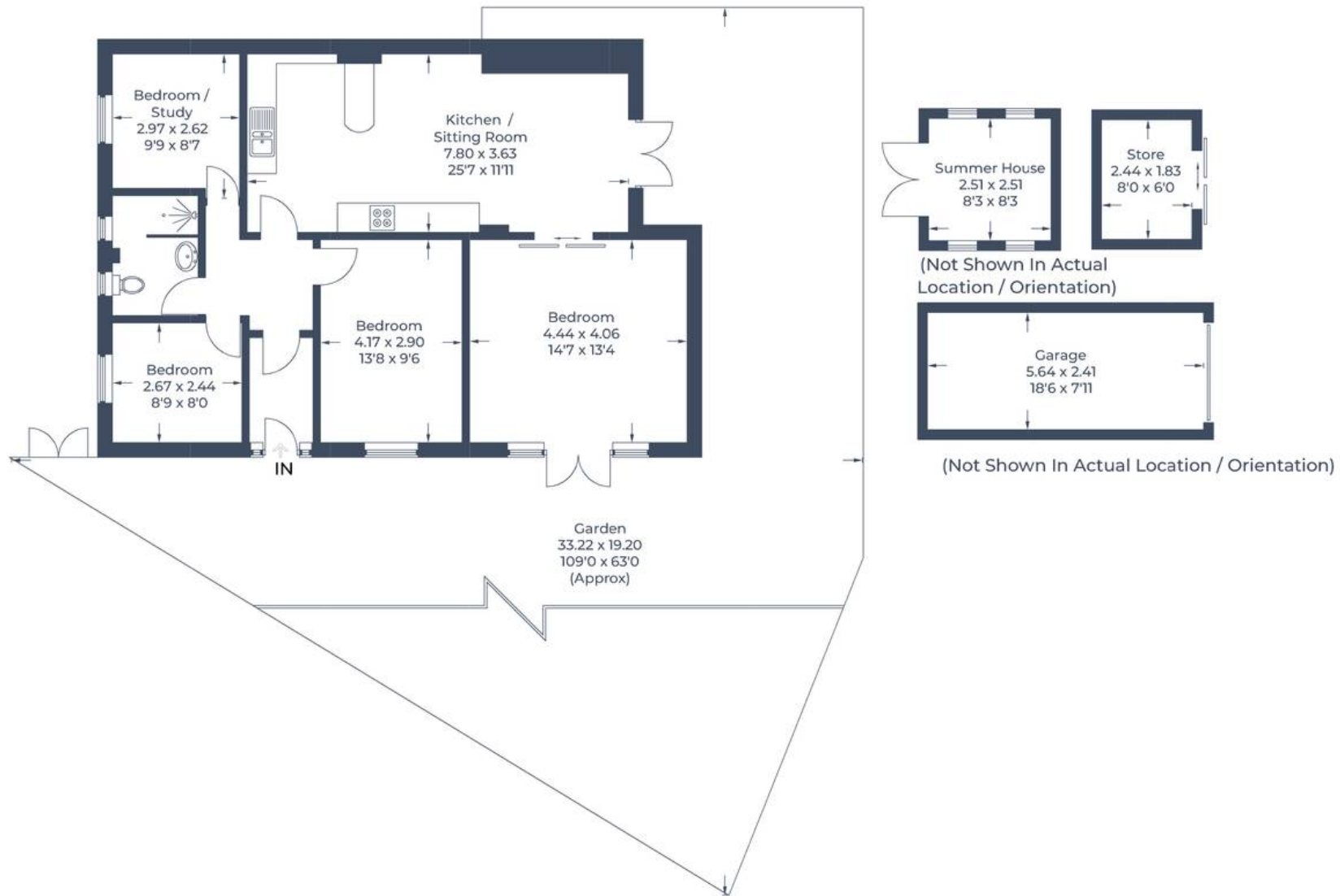


Illustration for identification purposes only,
measurements are approximate, not to scale.
© CJ Property Marketing Produced for Simpsons



Simpsons Witney Branch

4 Langdale Court Witney, Oxfordshire - OX28 6AD

01993 835030 • witney@simpsonsproperty.com • www.simpsonsproperty.com/