



20 Saxon Way, Witney

Guide Price £375,000



20 Saxon Way

We are delighted to bring to market this fabulous three bedroom semi-detached home situated in a popular location within walking distance of local amenities.

Council Tax band: D

Tenure: Freehold

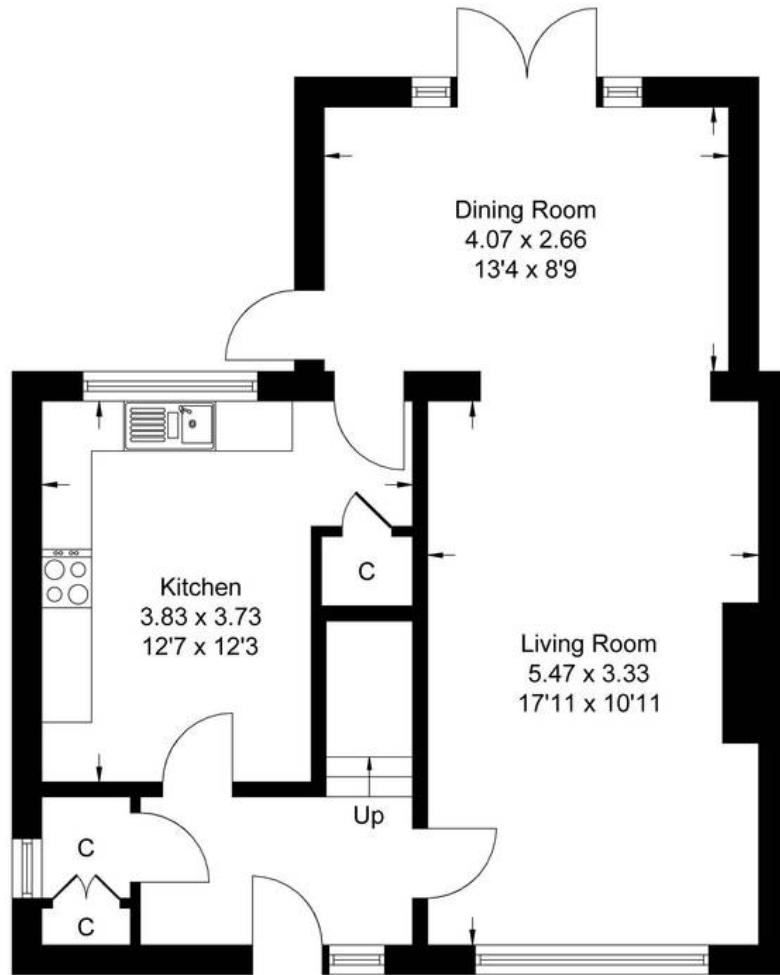
EPC Energy Efficiency Rating: C

EPC Environmental Impact Rating: D

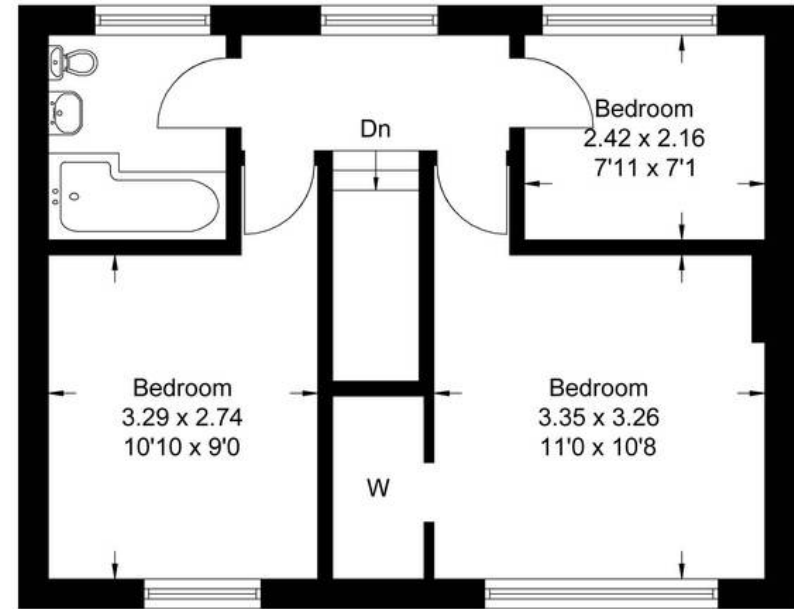
- A fabulous opportunity to purchase a three bedroom semi-detached home situated in a popular location within walking distance of the town centre offering an array of amenities.
- Potential to extend (STPP).
- Beautifully landscaped rear garden predominantly laid to lawn with decking.
- Off street parking.
- Two double bedrooms to the first floor.
- Fitted kitchen with separate dining room and sitting room.



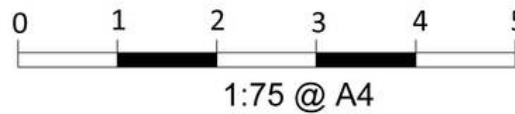
Approximate Gross Internal Area = 90.92 sq m / 979 sq ft



Ground Floor



First Floor



Whilst every attempt has been made to ensure the accuracy of the floor plan contained here, measurements of doors, windows, rooms and any other items are approximate and no responsibility is taken for any error, omission, or misstatement. This plan is for illustrative purposes only and should be used as such by any prospective purchaser.



Simpsons Witney Branch

4 Langdale Court Witney, Oxfordshire - OX28 6AD

01993 835030 • witney@simpsonsproperty.com • www.simpsonsproperty.com/