



19 Cotswold Meadow, Witney

Guide Price £585,000



19 Cotswold Meadow

A great opportunity to purchase a fantastic detached four-bedroom family home located in an enviable cul-de-sac location on the popular Deer Park development within Witney.

Council Tax band: E

Tenure: Freehold

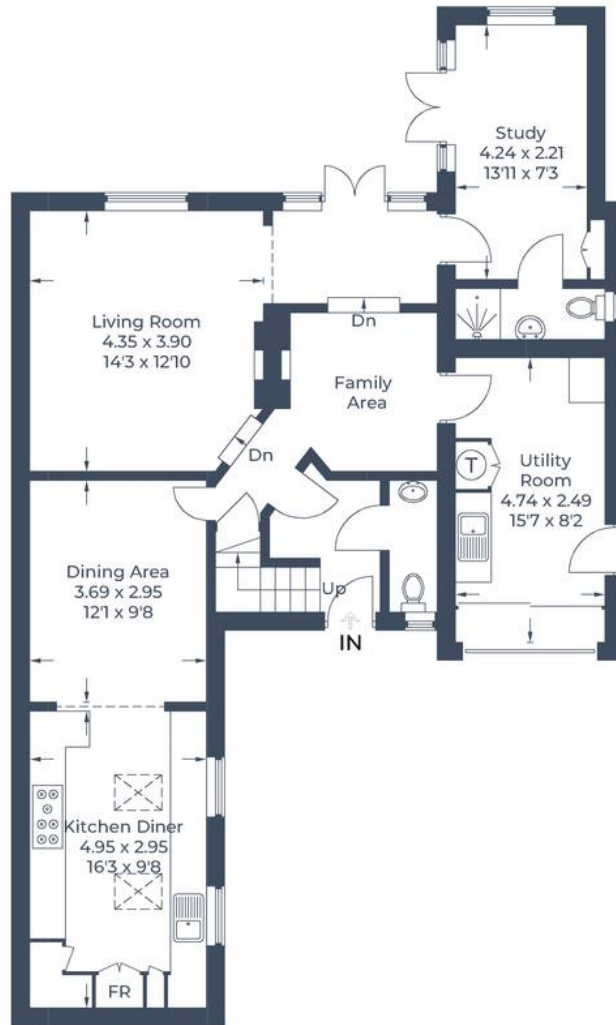
EPC Energy Efficiency Rating: C

EPC Environmental Impact Rating: C

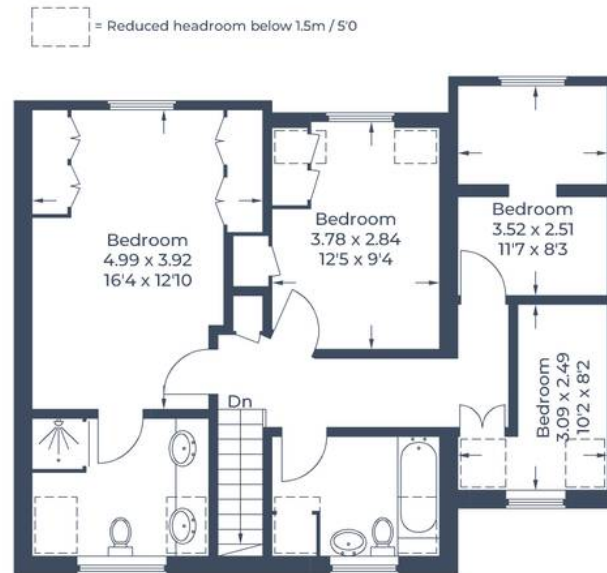
- Situated in an enviable cul-de-sac location on the popular Deer Park development is this fantastic four-bedroom detached home offering a purchaser over 1700sqft of living space.
- Bright and airy fitted kitchen with Velux windows offering an abundance of natural light.
- Three reception rooms to the ground floor including a study or fifth bedroom with shower room, family room and sitting room.
- Landscaped rear garden with patio, decking and hot tub.
- Sitting room with stone fireplace and gas fire.
- Driveway parking for several cars.



Approximate Gross Internal Area
 Ground Floor = 92.4 sq m / 994 sq ft
 First Floor = 68.8 sq m / 740 sq ft
 Total = 161.2 sq m / 1,734 sq ft



Ground Floor



First Floor

Illustration for identification purposes only,
 measurements are approximate, not to scale.



Simpsons Witney Branch

4 Langdale Court Witney, Oxfordshire - OX28 6AD

01993 835030 • witney@simpsonsproperty.com • www.simpsonsproperty.com/