



6 Quarry Road, Witney



6 Quarry Road

A fantastic opportunity to purchase this three bedroom semi-detached bungalow situated on the outskirts of Witney within walking distance of the town centre.

Council Tax band: C

Tenure: Freehold

EPC Energy Efficiency Rating: E

EPC Environmental Impact Rating: F

- Brought to market with the certainty of no onward chain.
- A well presented semi-detached three bedroom bungalow located on the outskirts of Witney within walking distance of the town centre.
- Good sized kitchen with separate dining room.
- Off-street parking.
- Rear garden predominantly laid to patio.
- Modern bathroom with electric shower.



Approximate Gross Internal Area = 71.2 sq m / 766 sq ft
Shed = 3.0 sq m / 32 sq ft
Total = 74.2 sq m / 798 sq ft

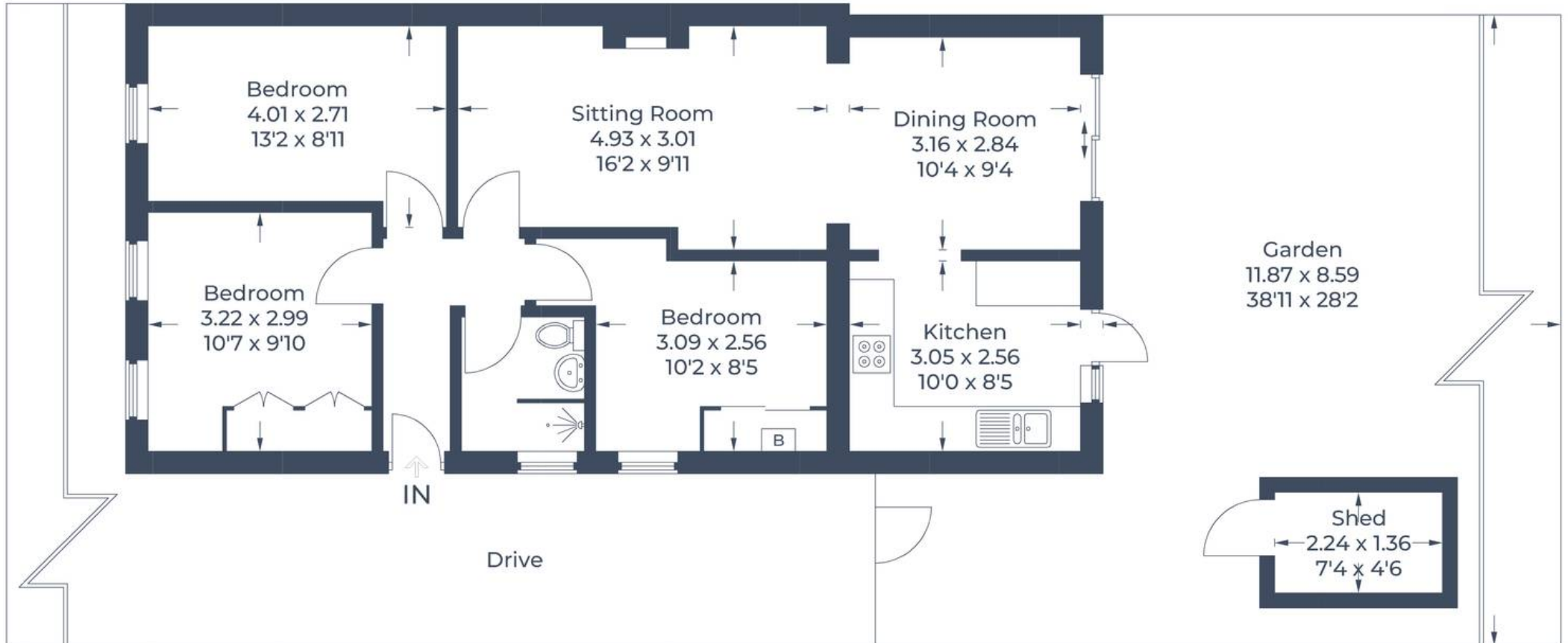


Illustration for identification purposes only,
measurements are approximate, not to scale.

© CJ Property Marketing Produced for Simpsons



Simpsons Witney Branch

4 Langdale Court Witney, Oxfordshire - OX28 6AD

01993 835030 • witney@simpsonsproperty.com • www.simpsonsproperty.com/