



178 Corn Street, Witney

Guide Price £385,000



178 Corn Street

A fantastic opportunity to buy this newly-built end of terrace three bedroom home located on a small exclusive development within walking distance of all town centre amenities with shops, pubs and eateries located almost on the doorstep.

Council Tax band: C

Tenure: Freehold

EPC Energy Efficiency Rating: B

EPC Environmental Impact Rating: B

- A contemporary newly-built end of terrace home located on a popular road in Witney within walking distance of all town centre amenities.
- Fully fitted kitchen with high quality integrated appliances.
- Modern open plan kitchen/dining/living room with bi-fold doors leading to the beautifully landscaped garden.
- Three spacious bedrooms and a modern family bathroom.
- Off-street parking for two cars.
- Five years structural warranty remaining.



Approximate Gross Internal Area
Ground Floor = 48.7 sq m / 524 sq ft
First Floor = 37.1 sq m / 399 sq ft
Total = 85.8 sq m / 923 sq ft

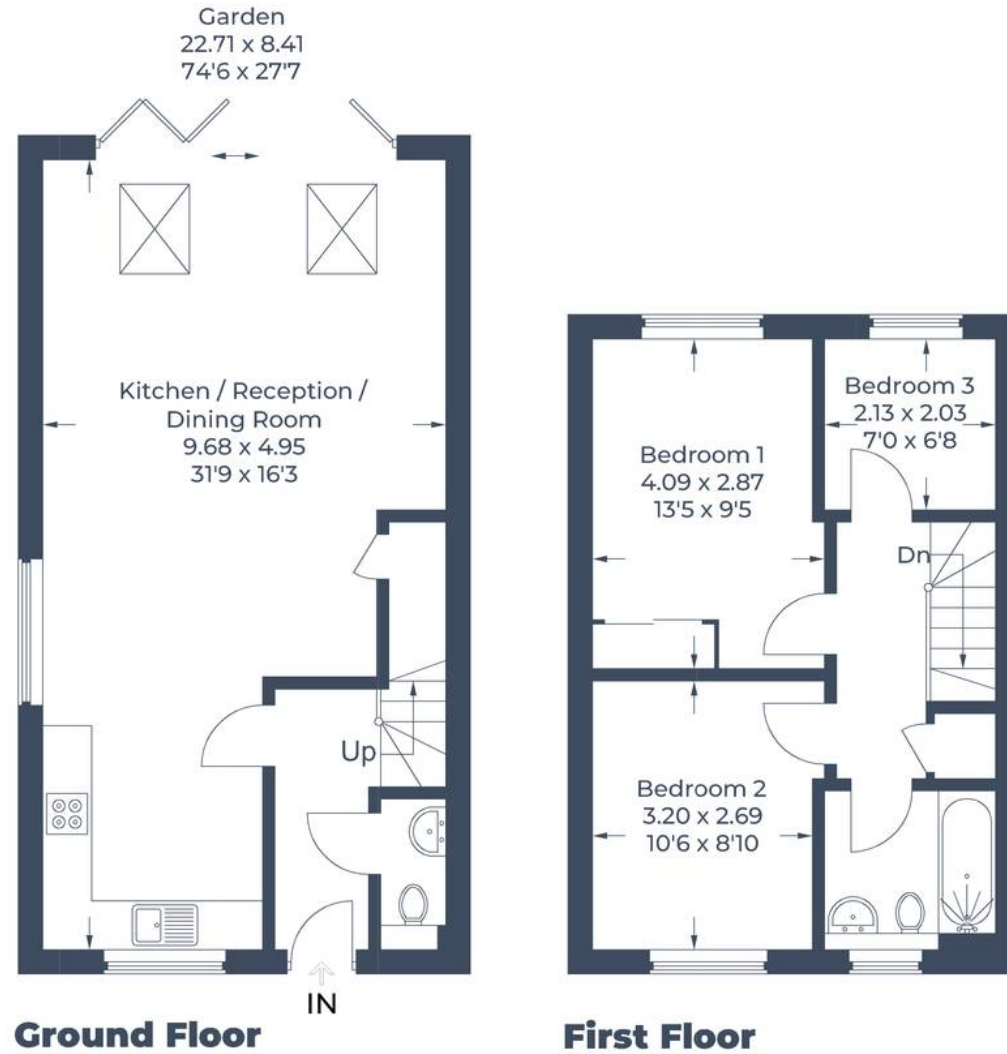


Illustration for identification purposes only,
measurements are approximate, not to scale.
© CJ Property Marketing Produced for Simpsons



Simpsons Witney Branch

4 Langdale Court, Witney - OX28 6AD

01993 835030 • witney@simpsonsproperty.com • www.simpsonsproperty.com/