



5 Ash Avenue, Carterton

Guide Price £270,000



5 Ash Avenue

Offered to the market with no onward chain is this well presented and recently decorated two bedroom property located on the popular Shilton Park development.

Council Tax band: C

Tenure: Freehold

EPC Energy Efficiency Rating: C

EPC Environmental Impact Rating: C

- Offered to the market with no onward chain.
- Perfect for first-time buyers or investors.
- Off road parking to rear of the property with garage.
- Recently re-decorated throughout.
- Two double bedrooms.
- Walking distance to amenities including shops, primary and secondary schools.






Ash Avenue, OX18

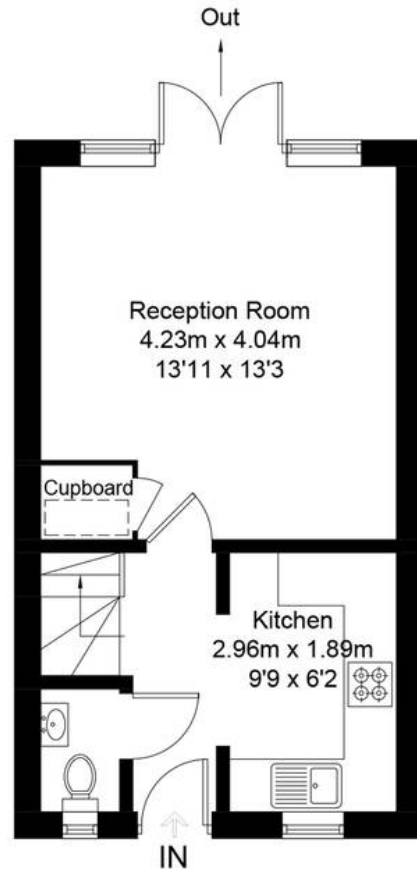
Approximate Gross Internal Area = 59.9 sq m / 645 sq ft

Garage = 14.5 sq m / 156 sq ft

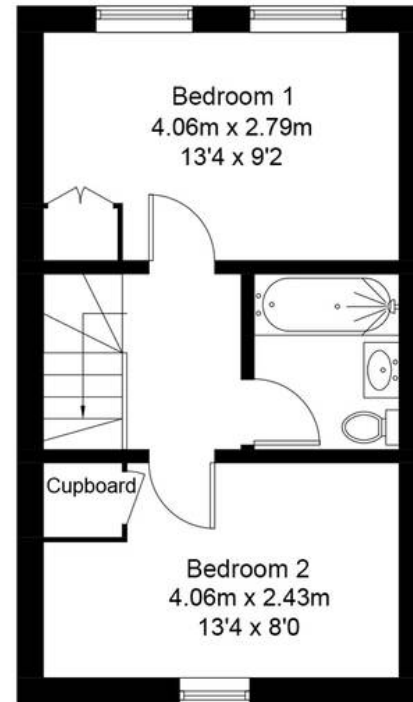
Total = 74.4 sq m / 801 sq ft

For identification only - Not to scale

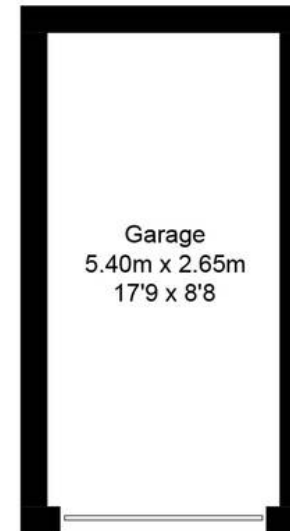
 = Reduced headroom below 1.5m / 5'0



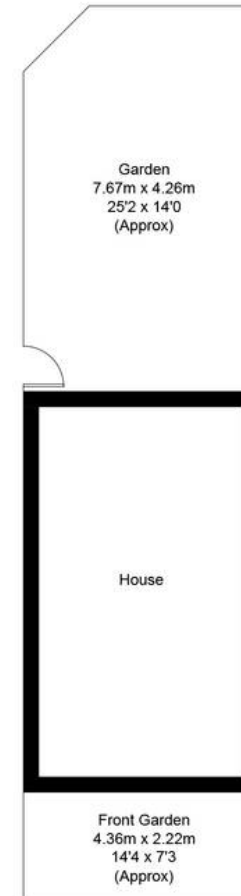
Ground Floor



First Floor



(Not Shown In Actual
Location / Orientation)





Simpsons Witney Branch

4 Langdale Court, Witney - OX28 6AD

01993 835030 • witney@simpsonsproperty.com • www.simpsonsproperty.com/