



75 Eton Close, Witney

Offers In Excess of £300,000



75 Eton Close

A neatly presented and exceptionally well maintained two-bedroom home located on the popular Cogges development. This property would make the ideal home for a first-time buyer or investor.

Council Tax band: C

Tenure: Freehold

EPC Energy Efficiency Rating: D

EPC Environmental Impact Rating: D

- Well-maintained two-bedroom semi-detached home in the sought-after Cogges development.
- Includes garage and driveway parking for 2 cars.
- Large, private, south-facing garden laid to lawn with recently installed decking.
- Two spacious bedrooms and a modern family bathroom.
- Convenient walking distance to the town centre.
- Perfect for first-time buyers or investors.



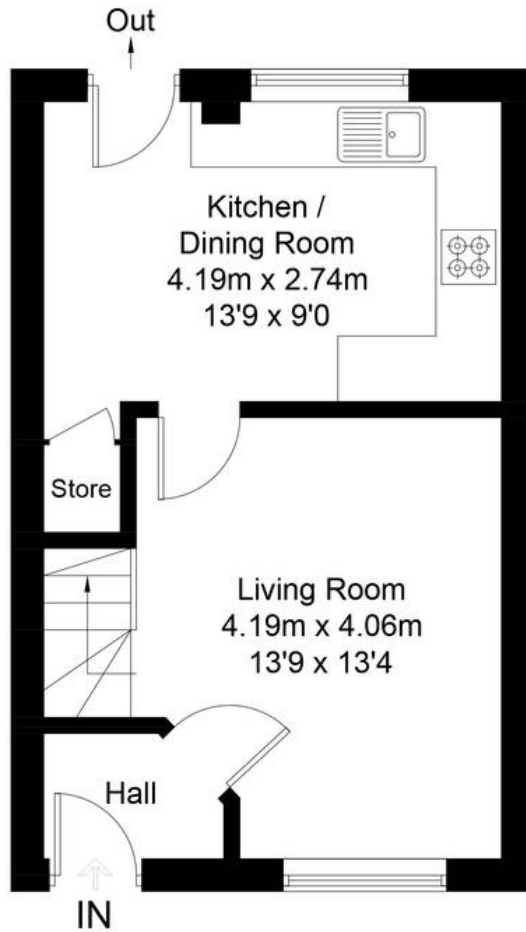
Eton Close, OX28

Approximate Gross Internal Area = 58.6 sq m / 631 sq ft

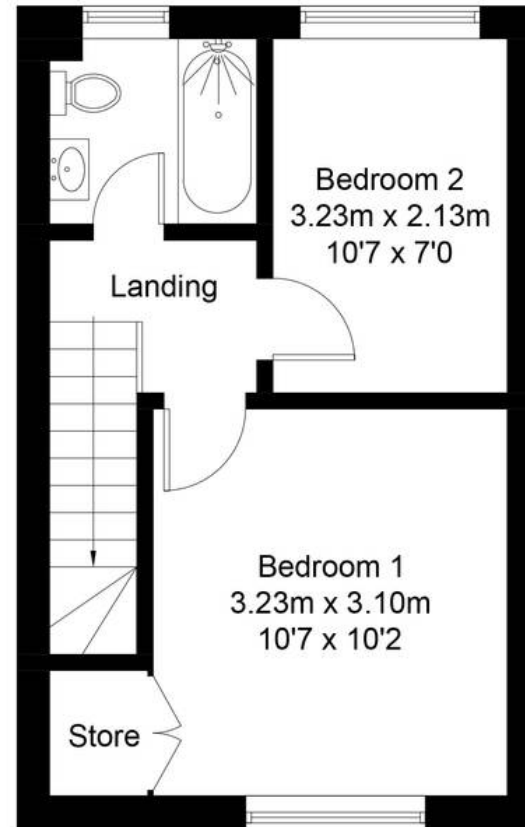
Garage = 13.3 sq m / 143 sq ft

Total = 71.9 sq m / 774 sq ft

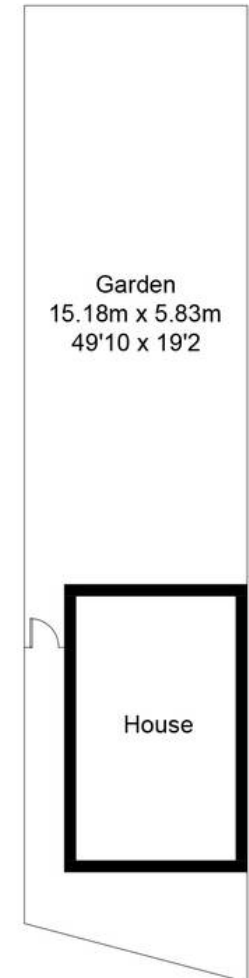
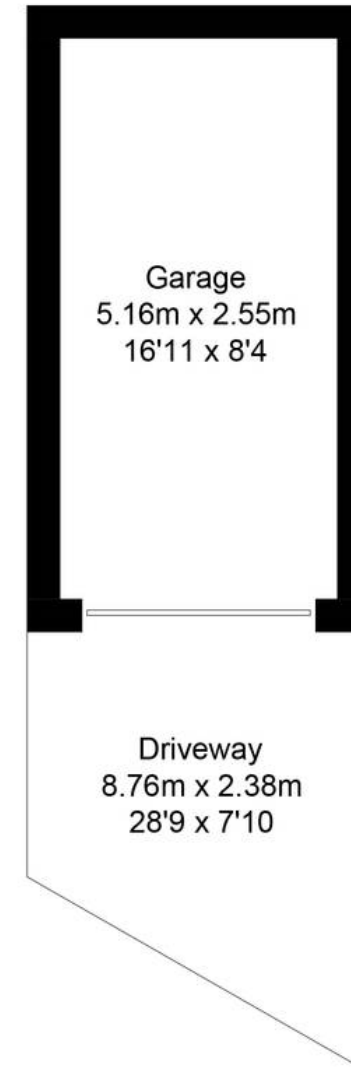
For identification only - Not to scale



Ground Floor



First Floor





Simpsons Witney Branch

4 Langdale Court, Witney - OX28 6AD

01993 835030 • witney@simpsonsproperty.com • www.simpsonsproperty.com/