



## 27 The Crofts, Witney

Guide Price £440,000



## 27 The Crofts

A fantastic opportunity to purchase this recently updated three bedroom semi-detached home located just a short walk from Witney town centre.

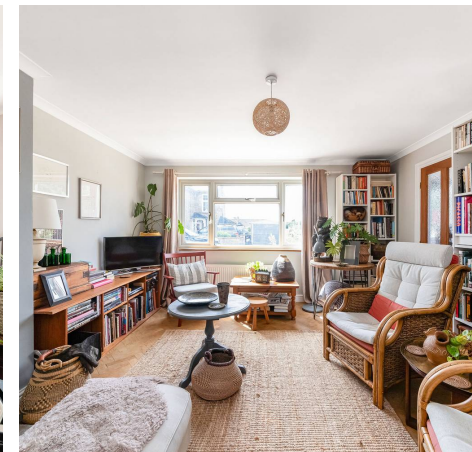
Council Tax band: D

Tenure: Freehold

EPC Energy Efficiency Rating: C

EPC Environmental Impact Rating: C

- Recently updated three bedroom semi-detached home located just a short walk from Witney town centre.
- Exceptionally versatile accommodation.
- Off-street parking.
- Built in wardrobes to master bedroom and bedroom two.
- Three reception rooms.
- Two bathrooms including a ground floor wet room.





# The Crofts, OX28

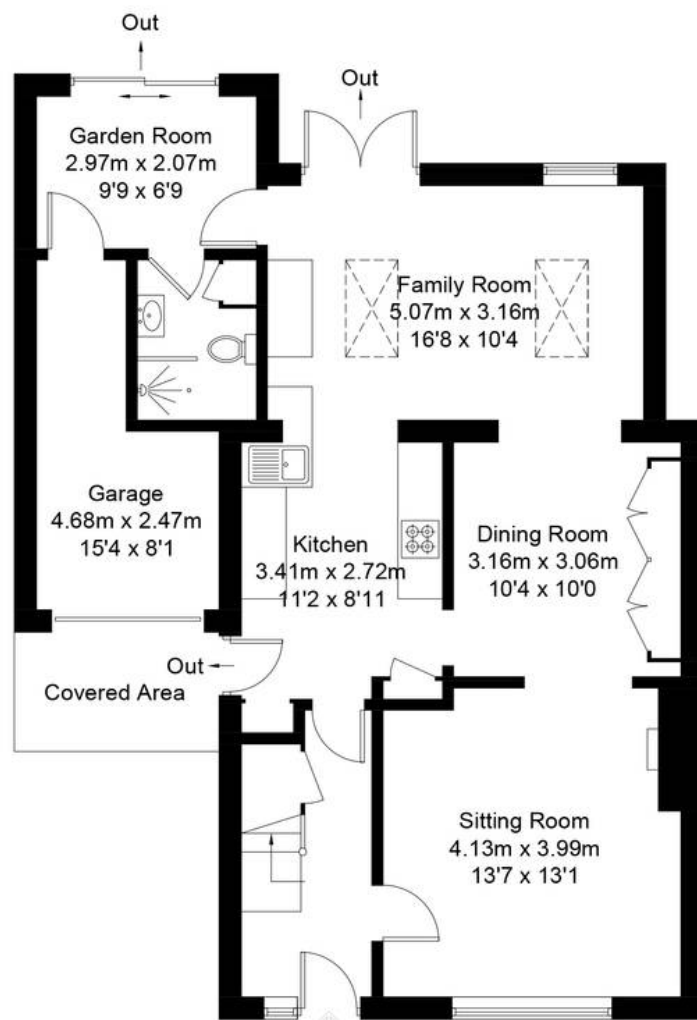
Approximate Gross Internal Area = 116.4 sq m / 1253 sq ft

Garage = 8.8 sq m / 95 sq ft

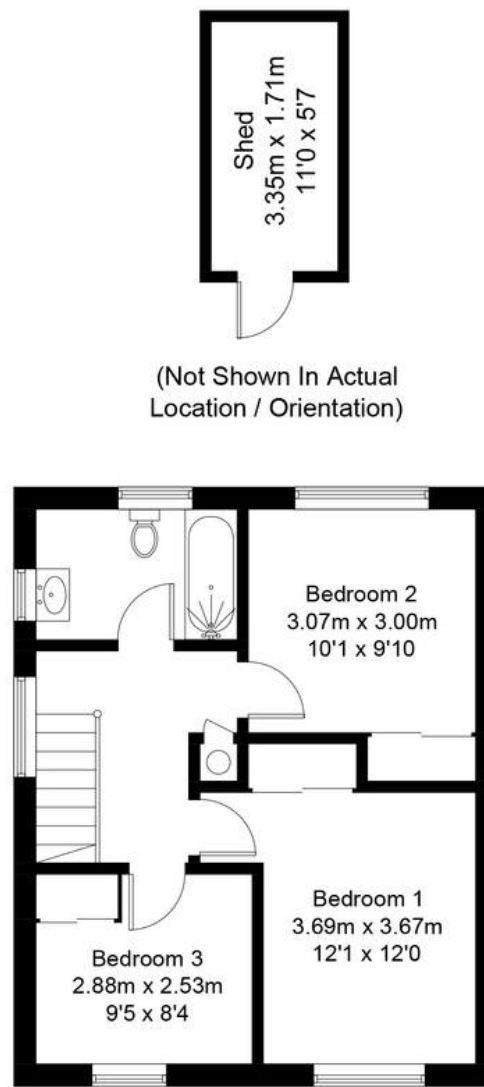
Total = 125.2 sq m / 1348 sq ft

Shed = 5.7 sq m / 61 sq ft

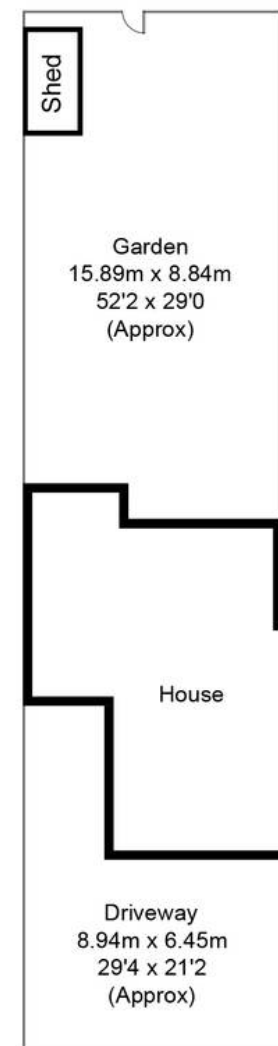
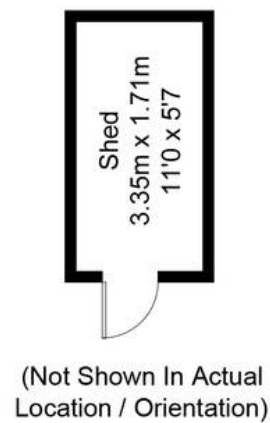
For identification only - Not to scale



**Ground Floor**



**First Floor**





## Simpsons Witney Branch

4 Langdale Court, Witney - OX28 6AD

01993 835030 • [witney@simpsonsproperty.com](mailto:witney@simpsonsproperty.com) • [www.simpsonsproperty.com/](http://www.simpsonsproperty.com/)