



## 17 Akeman Road, North Leigh

Offers In Excess of **£550,000**





## 17 Akeman Road

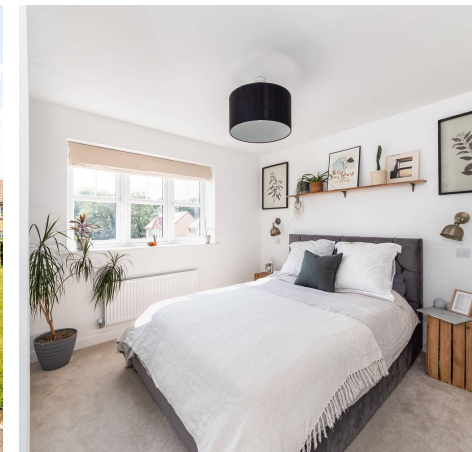
A superb four-bedroom family home overlooking green open space, located in the desirable village of North Leigh.

Tenure: Freehold

EPC Energy Efficiency Rating: B

EPC Environmental Impact Rating: B

- A 'Bewley' built family home located in the village of North Leigh benefitting from a private rear garden and open plan kitchen/diner.
- Large master bedroom with en-suite and sliding triple door wardrobe.
- Garage and driveway parking.
- Green open views to the front of the property.
- Numerous upgrades throughout the home including Silestone worktops, Karndean flooring and additional tiling to the bathrooms.
- Three further bedrooms offering versatile accommodation.





# Akeman Road, OX29

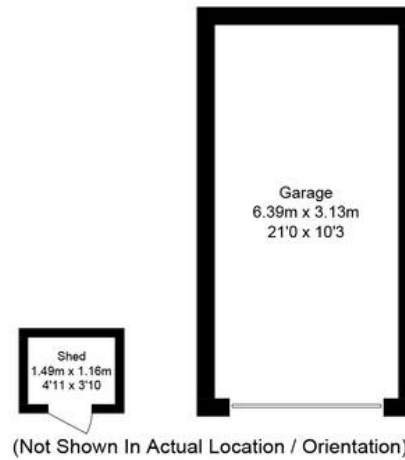
Approximate Gross Internal Area = 121.1 sq m / 1303 sq ft

Garage = 20.4 sq m / 220 sq ft

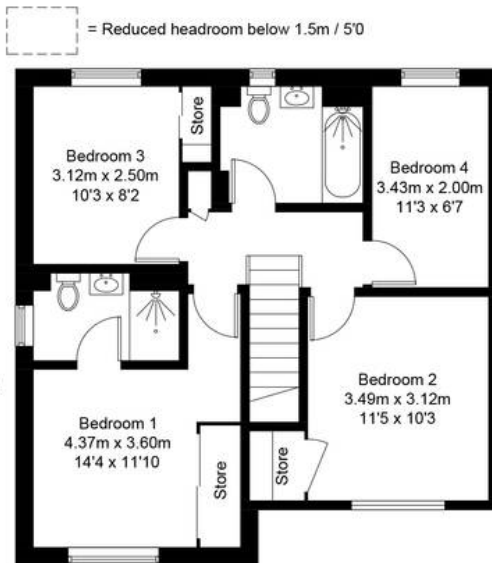
Total = 141.5 sq m / 1523 sq ft

Shed = 1.7 sq m / 18 sq ft

For identification only - Not to scale



Ground Floor



First Floor

= Reduced headroom below 1.5m / 5'0





## Simpsons Witney Branch

4 Langdale Court, Witney - OX28 6AD

01993 835030 • [witney@simpsonsproperty.com](mailto:witney@simpsonsproperty.com) • [www.simpsonsproperty.com/](http://www.simpsonsproperty.com/)