



ATHERTONS
ESTATE & LETTING AGENTS

ATHERTONS
ESTATE & LETTING AGENTS

EST. 1985

Flat 38, Denmark Court, Wimborne Road, Poole, BH15 2FL

Guide Price £115,000

A beautifully presented third-floor apartment offered on a shared ownership basis, located within a sought-after development near Poole Town Centre.

This impressive home features a welcoming communal foyer with lift access to all floors. Inside, you'll find a spacious entrance hallway leading to a bright and stylish open-plan living area, which includes a contemporary kitchen, lounge, and dining space. French doors open onto a Juliet balcony with elevated views across Poole.

The apartment boasts two generously sized double bedrooms, both benefiting from Juliet balconies that also enjoy scenic outlooks. A modern family bathroom, double glazing, and gas central heating further enhance the comfort of this home.

Additional benefits include secure underground allocated parking. Available with a 50% shared ownership, there is also the opportunity to staircase to 100% ownership.





Poole Town Centre is a vibrant and historic area in Dorset, blending modern amenities with a rich maritime heritage. Stretching from the bustling Poole Quay to the Dolphin Shopping Centre, it offers a diverse range of attractions for both residents and visitors.

Poole Quay remains a focal point, with regular boat departures to destinations like Brownsea Island, known for its association with the founding of the Scout movement. The Lighthouse, located in the town centre, is a renowned arts venue offering a range of performances, including theatre, music, and dance.

The park hosts various events throughout the year, contributing to the town's lively community atmosphere. Whether you're interested in shopping, dining, exploring maritime history, or enjoying cultural events, Poole Town Centre offers a rich and engaging experience.

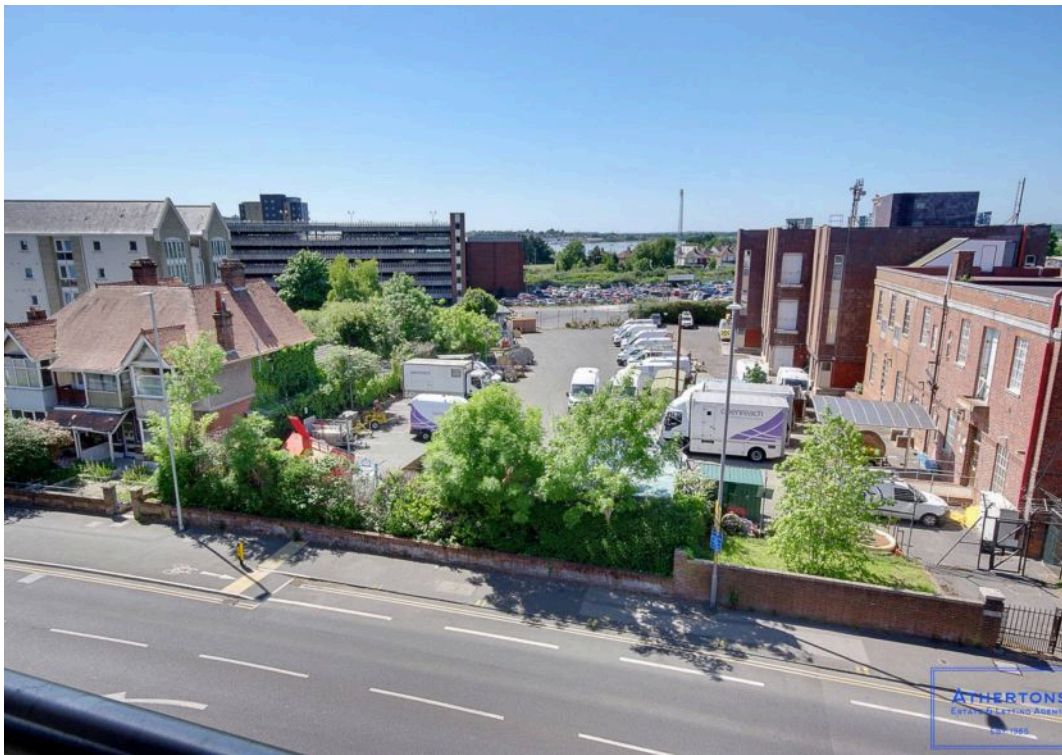
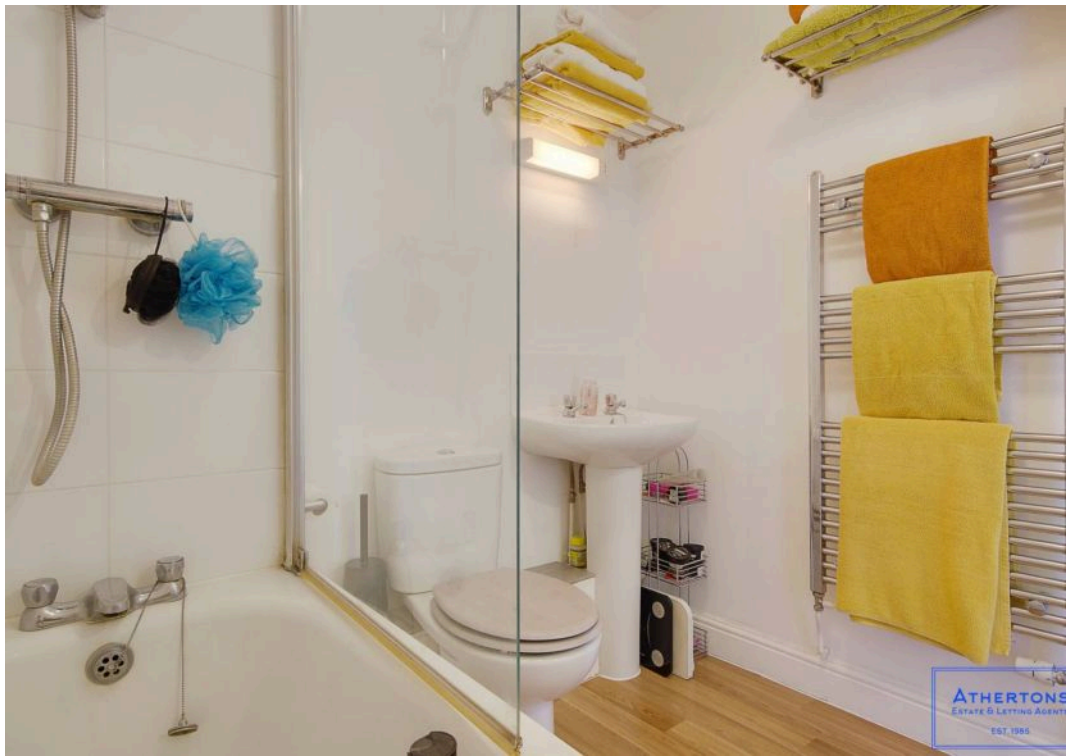
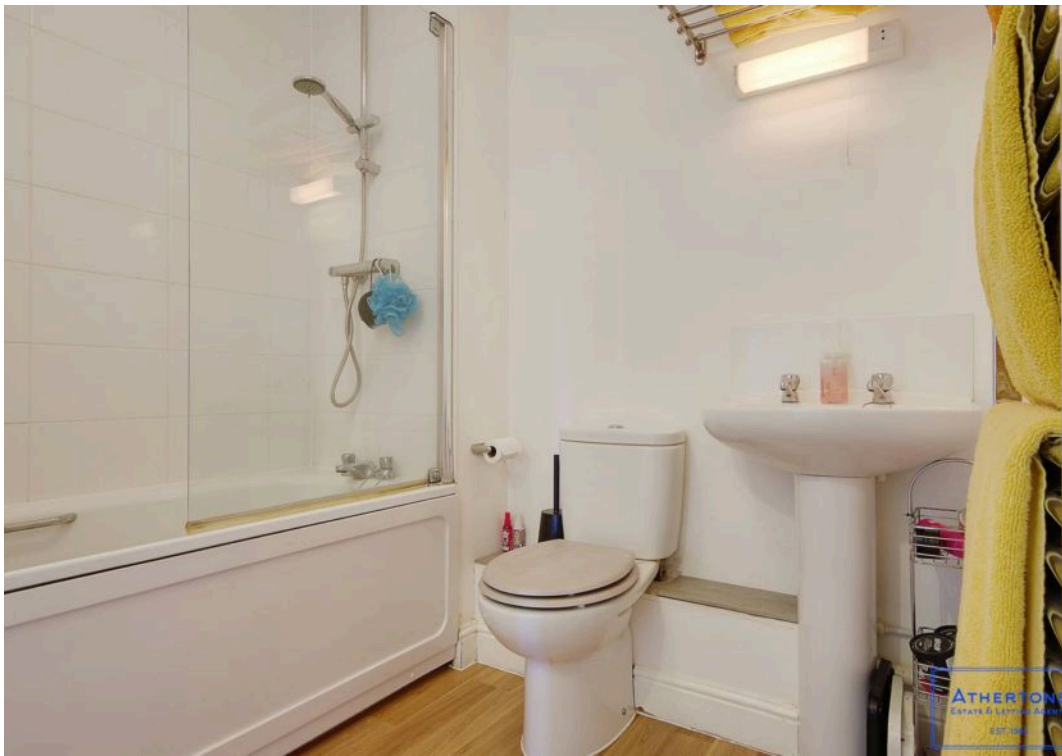
Council Tax band: B

Tenure: Leasehold

EPC Energy Efficiency Rating: B







THIRD FLOOR





Athertons Estate Agents

14 Dorchester Road, Oakdale - BH15 3JY

01202 681113 • poole@athertonsea.com • <http://www.athertonsestateagents.com>

