



ATHERTONS
ESTATE & LETTING AGENTS

EST. 1985

18 Denmark Lane, Heckford Park, Poole, BH15 2DG

Guide Price **£375,000**

Ideally situated within easy walking distance of Poole Hospital, the scenic Poole Park, and the vibrant Poole Town Centre, this delightful family home offers a rare blend of character, comfort, and convenience. Dating back to 1869 and cherished by the same family since 1950, the property exudes warmth and has been lovingly maintained throughout the years.

Step inside to a welcoming entrance hallway leading to a well-appointed kitchen and a cosy, snug-style lounge featuring a striking bay window that floods the room with natural light. The generous dining room opens directly onto the rear garden via patio doors—perfect for entertaining or enjoying peaceful evenings at home. A fully fitted family bathroom completes the ground floor.

Upstairs, you'll find three generously sized bedrooms, each thoughtfully designed with built-in wardrobes to maximize space and functionality.

Outside, the home continues to impress with a beautifully presented rear garden, complete with a low-maintenance artificial lawn, a comfortable seating area, and two spacious wooden outbuildings—ideal for storage. Additional benefits include double glazing, gas central heating, and a private driveway providing off-road parking.

This is a rare opportunity to own a well-loved home in a prime Poole location—early viewing is highly recommended.





Heckford Park is a charming and well-connected residential area in Poole, Dorset, located just north of the town centre.

Known for its rich architectural heritage and community feel, it offers a blend of historic character and modern convenience. Designated as a conservation area in 2010, Heckford Park is celebrated for its Victorian and Edwardian architecture, reflecting its 19th-century origins.

The neighbourhood features a mix of terraced, semi-detached, and detached homes, many showcasing period features like high ceilings and bay windows.

The area has a higher-than-average level of private rental housing, making it popular among both homeowners and renters. Families in Heckford Park benefit from proximity to reputable schools such as Longfleet Church of England Primary School and Poole High School.

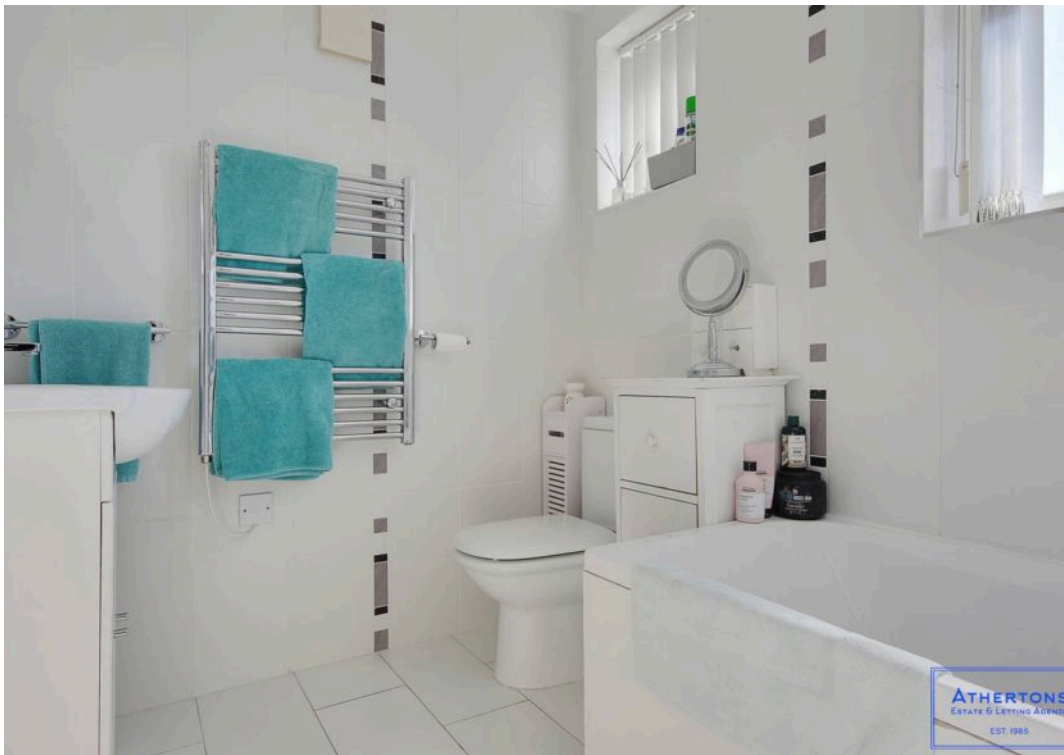
The neighbourhood also offers various amenities, including GP practices, dental clinics, and local shops, contributing to its appeal as a convenient and family-friendly area.

Council Tax band: B

Tenure: Freehold







GROUND FLOOR
455 sq.ft. (42.3 sq.m.) approx.

1ST FLOOR
401 sq.ft. (37.3 sq.m.) approx.



TOTAL FLOOR AREA: 856 sq.ft. (79.6 sq.m.) approx.

Whilst every attempt has been made to ensure the accuracy of the floorplan contained here, measurements of doors, windows, rooms and any other items are approximate and no responsibility is taken for any error, omission or mis-statement. This plan is for illustrative purposes only and should be used as such by any prospective purchaser. The services, systems and appliances shown have not been tested and no guarantee as to their operability or efficiency can be given.
Made with Metropix ©2025



Athertons Estate Agents

14 Dorchester Road, Oakdale - BH15 3JY

01202 681113 • poole@athertonsea.com • <http://www.athertonsestateagents.com>

ATHERTONS
ESTATE & LETTING AGENTS

EST. 1985