

ATHERTONS
ESTATE & LETTING AGENTS

EST. 1985

Flat 2, Navarac Court, 19 Belle Vue Road

Lower Parkstone, Poole

Offers Over **£275,000**

ATH
ESTATE & LETTING AGENTS



Flat 2

Navarac Court, Lower Parkstone, Poole

This beautifully elevated ground-floor apartment is situated in a highly sought-after location in the heart of Lower Parkstone, just a short stroll from the lively Ashley Cross.

The impressive home features a bright and spacious lounge/dining area with patio doors leading to a south-facing balcony, offering glimpses of Poole Harbour and the Purbeck Hills.

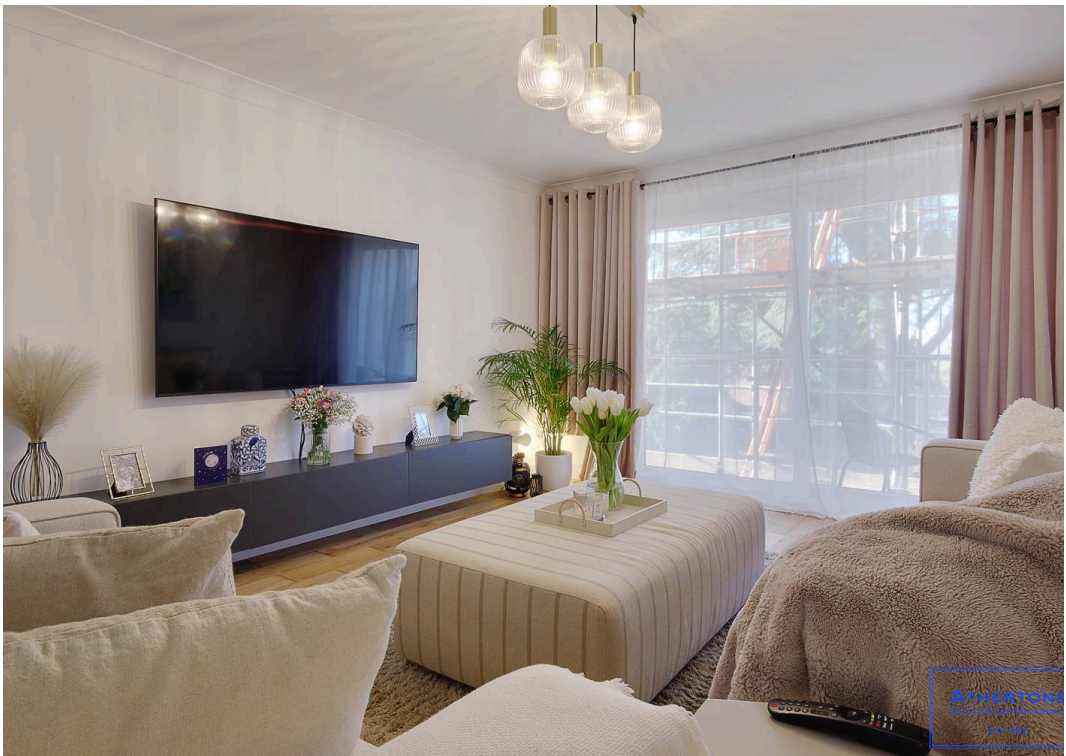
Additionally, the property includes a well-proportioned kitchen/breakfast room, a utility room, two double bedrooms, and a contemporary bathroom.

Further advantages include double glazing, electric heating, well-maintained communal gardens, residents' parking, and a garage.

The property is also available with no forward chain.

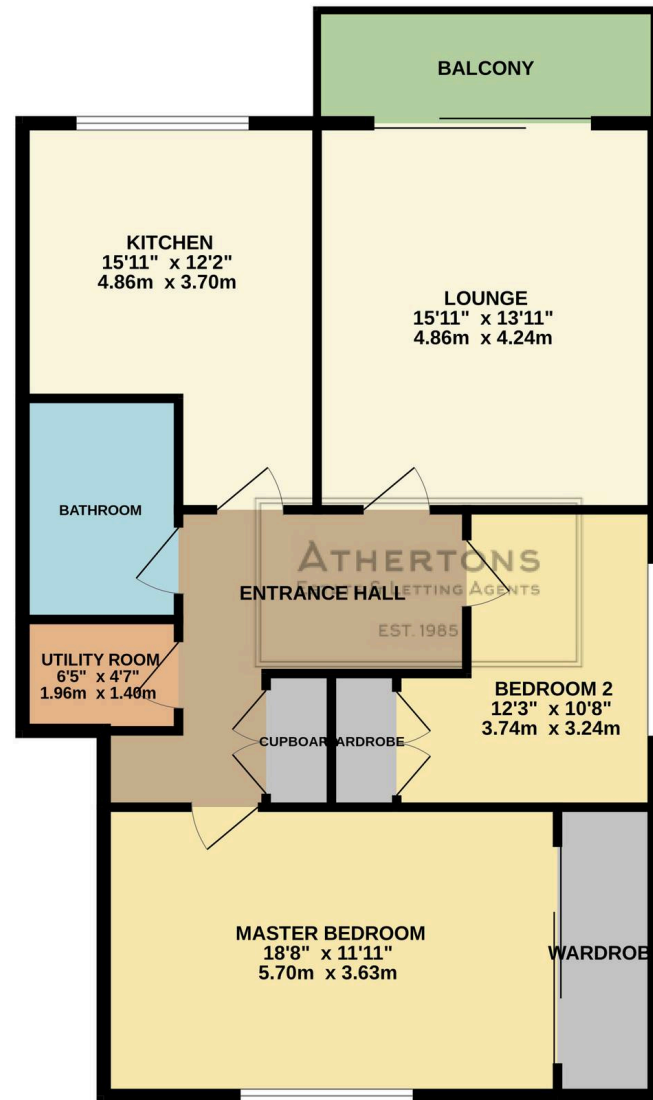
Council Tax band: TDB

Tenure: Leasehold





GROUND FLOOR
995 sq.ft. (92.4 sq.m.) approx.



TOTAL FLOOR AREA : 995 sq.ft. (92.4 sq.m.) approx.

Whilst every attempt has been made to ensure the accuracy of the floorplan contained here, measurements of doors, windows, rooms and any other items are approximate and no responsibility is taken for any error, omission or mis-statement. This plan is for illustrative purposes only and should be used as such by any prospective purchaser. The services, systems and appliances shown have not been tested and no guarantee as to their operability or efficiency can be given.
Made with Metropix ©2025



Athertons Estate Agents

14 Dorchester Road, Oakdale - BH15 3JY

01202 681113 • poole@athertonsea.com • www.athertonsestateagents.co.uk

