

ATHERTONS

ESTATE & LETTING AGENTS

EST. 1985

Flat 25 Tangmere Place, Canford Heath

Poole

Guide Price **£200,000**

ATHERTONS
ESTATE & LETTING AGENTS



Flat 25 Tangmere Place, Canford Heath

, Poole

NO FORWARD CHAIN - An exceptional top-floor apartment in a contemporary Canford Heath, Poole complex. This impressive property features an entrance hallway, a generous lounge/dining area, a well-equipped kitchen, a bathroom, double glazing, central heating, and ample storage space. It has a sizeable communal garden, residents' parking, and a garage within a block. Additional highlights include the remainder of a 999-year lease and the advantage of no forward-chain

Council Tax band: B

Tenure: Leasehold

- Top Floor Apartment
- Two Double Bedrooms
- Wonderful Lounge/Dining Room
- Communal Gardens
- Garage in a Block
- No Forward Chain



ATHERTONS
ESTATE & LETTING AGENTS
EST. 1985



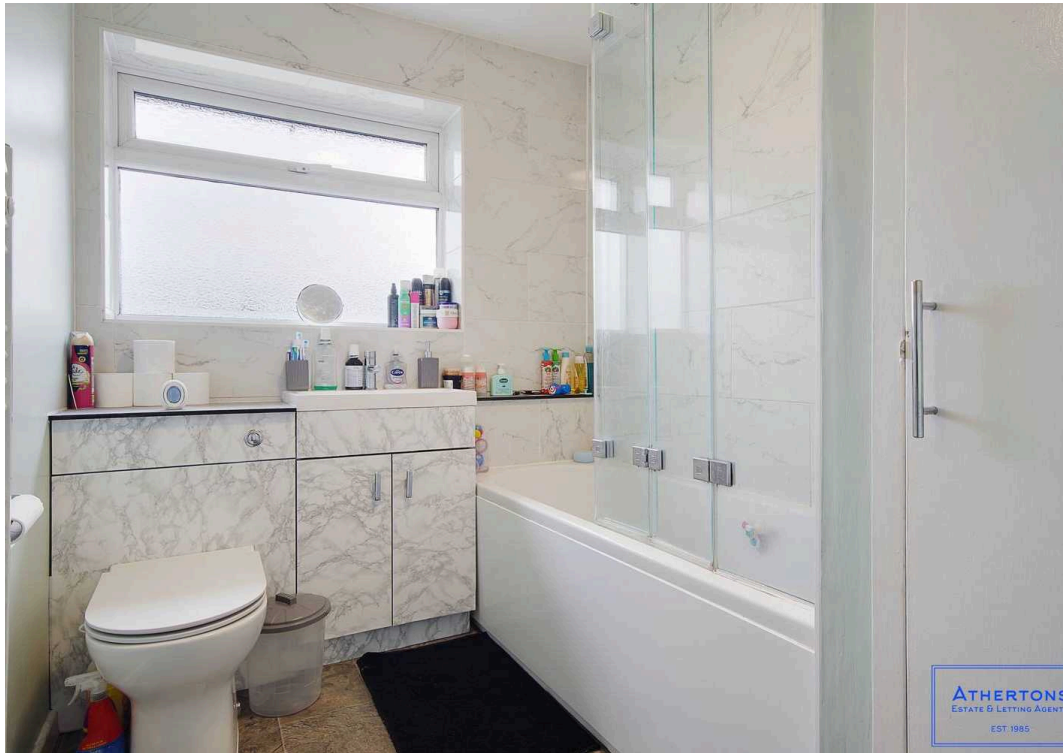
ATHERTONS
ESTATE & LETTING AGENTS
EST. 1985



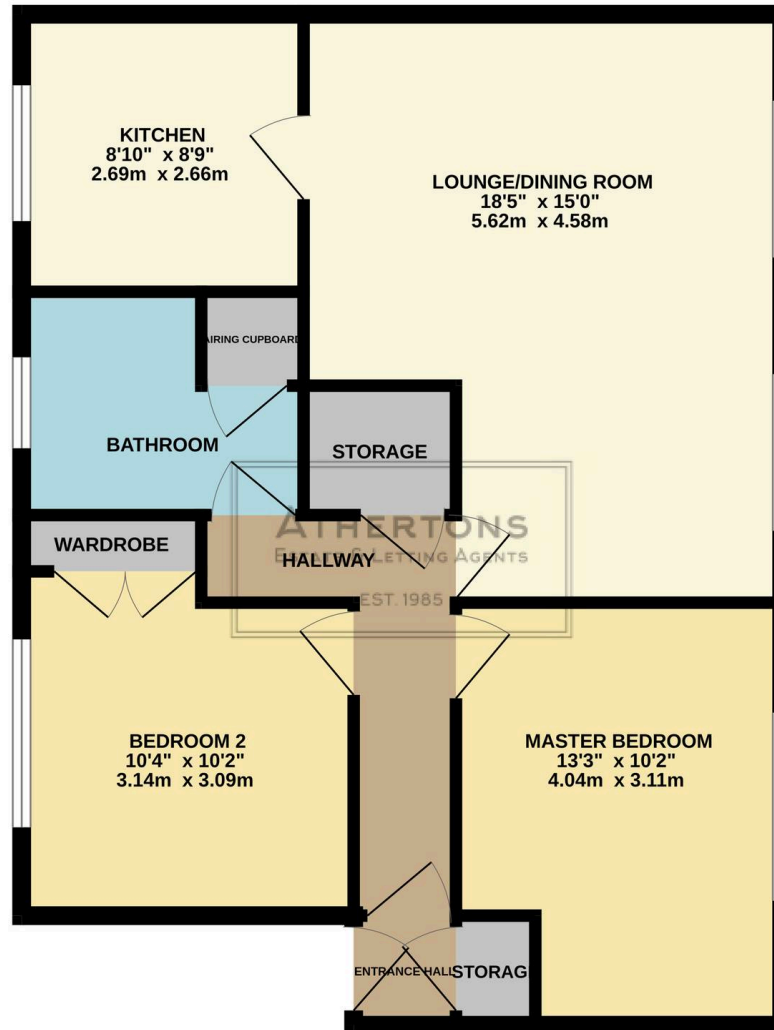
ATHERTONS
ESTATE & LETTING AGENTS
EST. 1985



ATHERTONS
ESTATE & LETTING AGENTS
EST. 1985



SECOND FLOOR
723 sq.ft. (67.2 sq.m.) approx.



TOTAL FLOOR AREA: 723 sq.ft. (67.2 sq.m.) approx.

Whilst every attempt has been made to ensure the accuracy of the floorplan contained here, measurements of doors, windows, rooms and any other items are approximate and no responsibility is taken for any error, omission or mis-statement. This plan is for illustrative purposes only and should be used as such by any prospective purchaser. The services, systems and appliances shown have not been tested and no guarantee as to their operability or efficiency can be given.
Made with Metropix ©2024



Athertons Estate Agents

14 Dorchester Road, Oakdale - BH15 3JY

01202 681113 • poole@athertonsea.com • www.athertonsestateagents.co.uk

