

ATHERTONS

ESTATE & LETTING AGENTS

EST. 1985

Flat 6, 48 Kings Avenue, Penn Hill

Poole

Guide Price **£275,000**

ATHERTONS
ESTATE & LETTING AGENTS



Flat 6

48 Kings Avenue, Penn Hill, Poole

LOCATION LOCATION LOCATION - An excellent top-floor apartment situated in the sought-after area of Penn Hill. Just a short walk from Canford Cliffs, this property is offered with no forward chain. It features an inviting entrance hallway, a spacious open-plan living and kitchen area, two double bedrooms, a contemporary bathroom, double glazing, central heating, a share of the freehold, a communal garden, and an allocated parking space. Viewing is highly recommended

Council Tax band: C

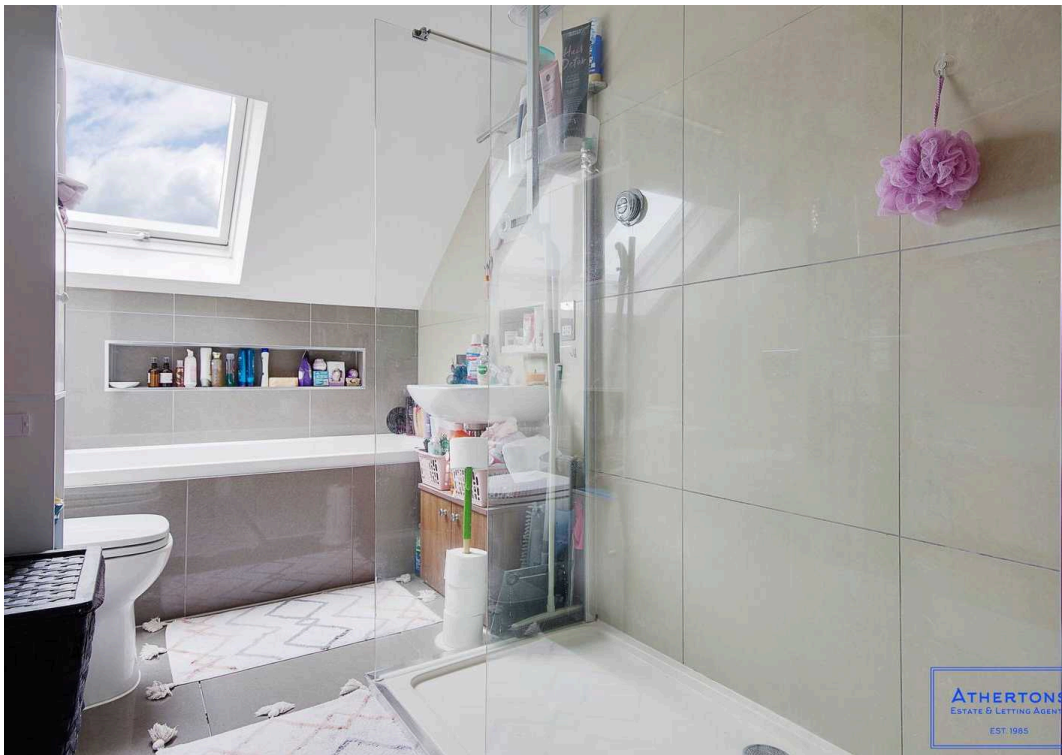
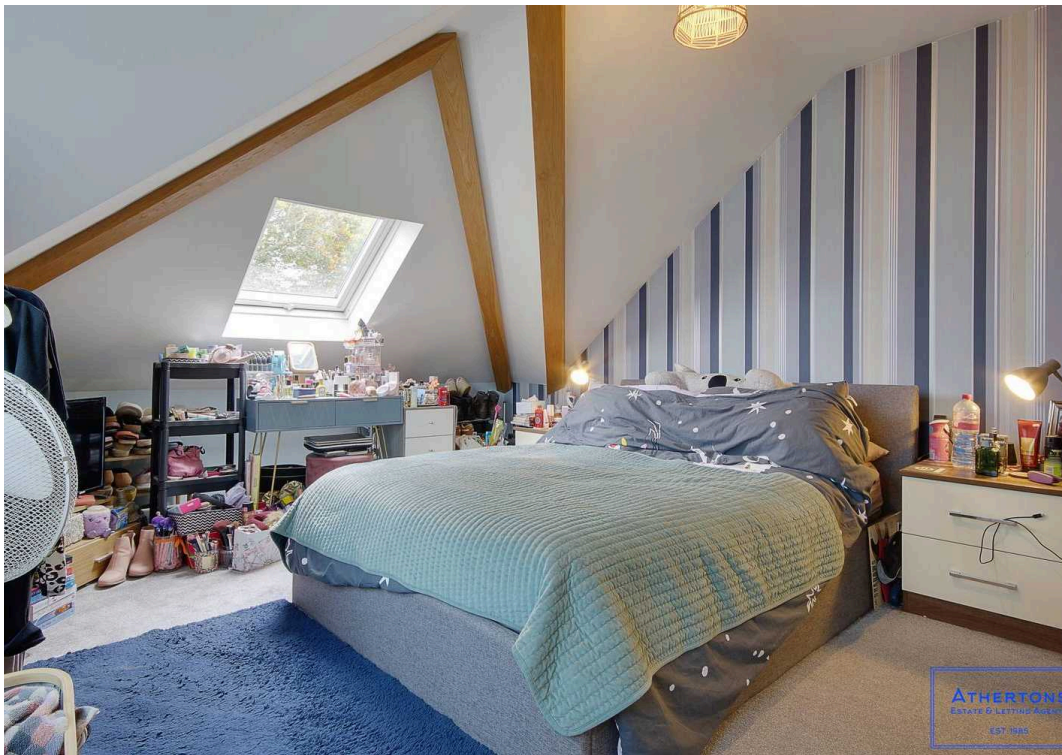
Tenure: Share of Freehold

EPC Energy Efficiency Rating: D

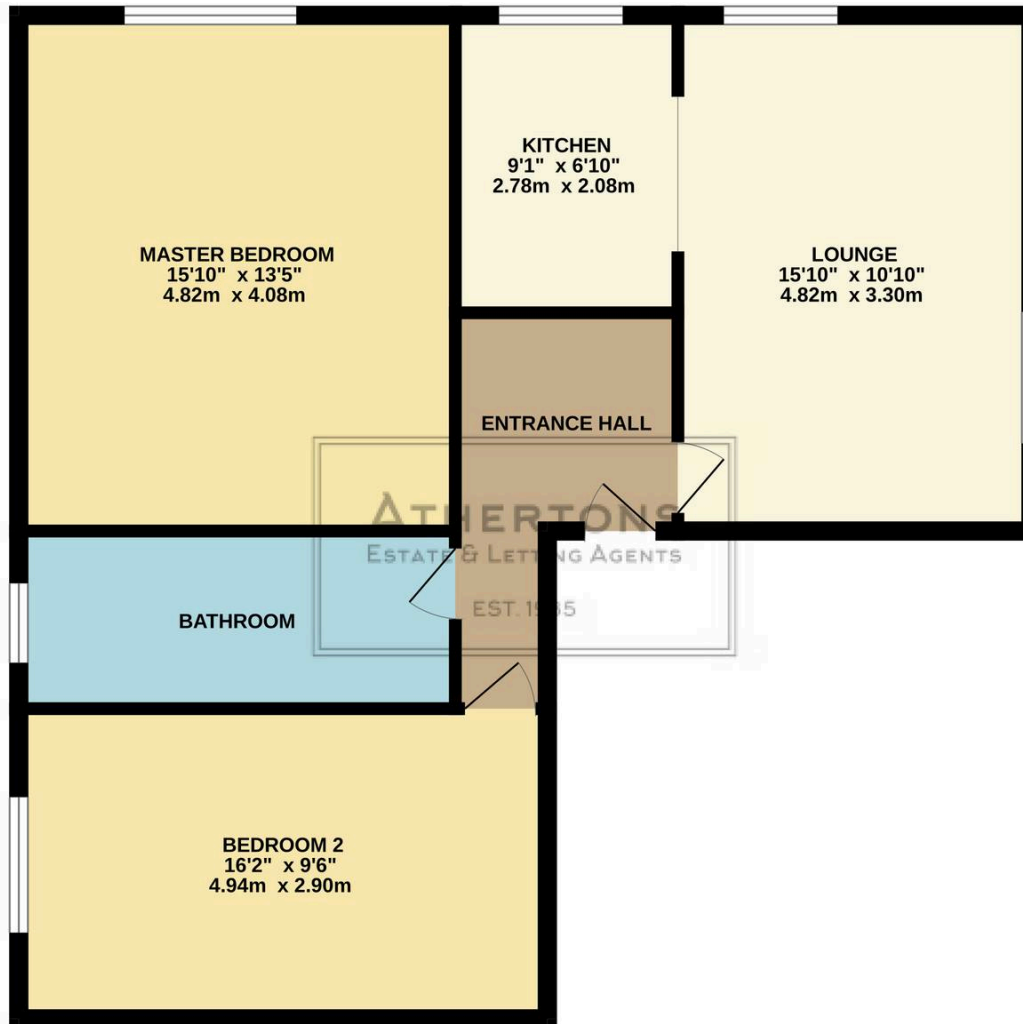
EPC Environmental Impact Rating: D

- Top Floor Apartment
- Wonderful Location
- Two Double Bedrooms
- Modern Kitchen & Bathroom
- Allocated Parking
- Chain Free





TOP FLOOR
733 sq.ft. (68.1 sq.m.) approx.



TOTAL FLOOR AREA: 733 sq.ft. (68.1 sq.m.) approx.

Whilst every attempt has been made to ensure the accuracy of the floorplan contained here, measurements of doors, windows, rooms and any other items are approximate and no responsibility is taken for any error, omission or mis-statement. This plan is for illustrative purposes only and should be used as such by any prospective purchaser. The services, systems and appliances shown have not been tested and no guarantee as to their operability or efficiency can be given.
Made with Metropix ©2024



Athertons Estate Agents

14 Dorchester Road, Oakdale - BH15 3JY

01202 681113 • poole@athertonsea.com • www.athertonsestateagents.co.uk

