

ATHERTONS

ESTATE & LETTING AGENTS

EST. 1985



Christopher Crescent, Fleets Bridge

Poole

Guide Price **£365,000**

ATHERTONS
ESTATE & LETTING AGENTS

EST. 1985



29 Christopher Crescent

Fleets Bridge, Poole

SPACIOUS FAMILY HOME - NO CHAIN - This generously sized family home is located in the sought-after area of Fleets Bridge, Poole. Lovingly maintained, the property features an inviting entrance hallway, a spacious kitchen, a comfortable lounge, a dining room, and a charming 24-foot conservatory/family room. Additional highlights include a downstairs cloakroom, four well-proportioned bedrooms, and a modern shower room. Outside, there is a private rear garden, an external storage room, and a front garden with potential for conversion into off-road parking. The home also benefits from double glazing, central heating, and ample street parking, and is offered with no forward chain

Council Tax band: C

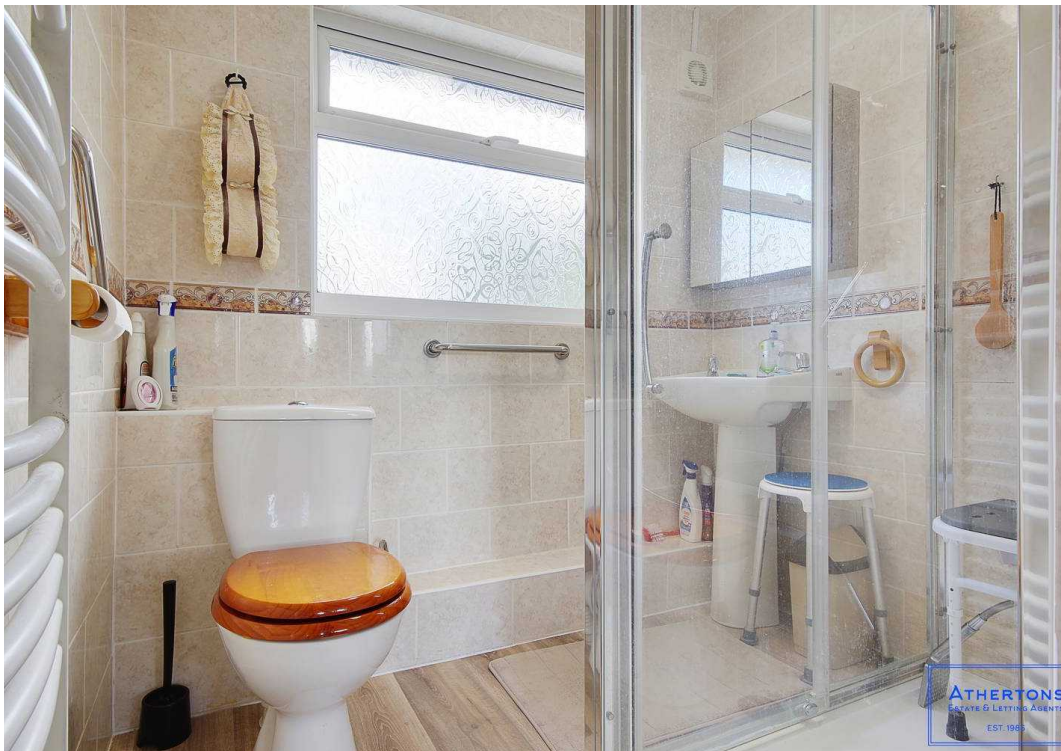
Tenure: Freehold

EPC Energy Efficiency Rating: C

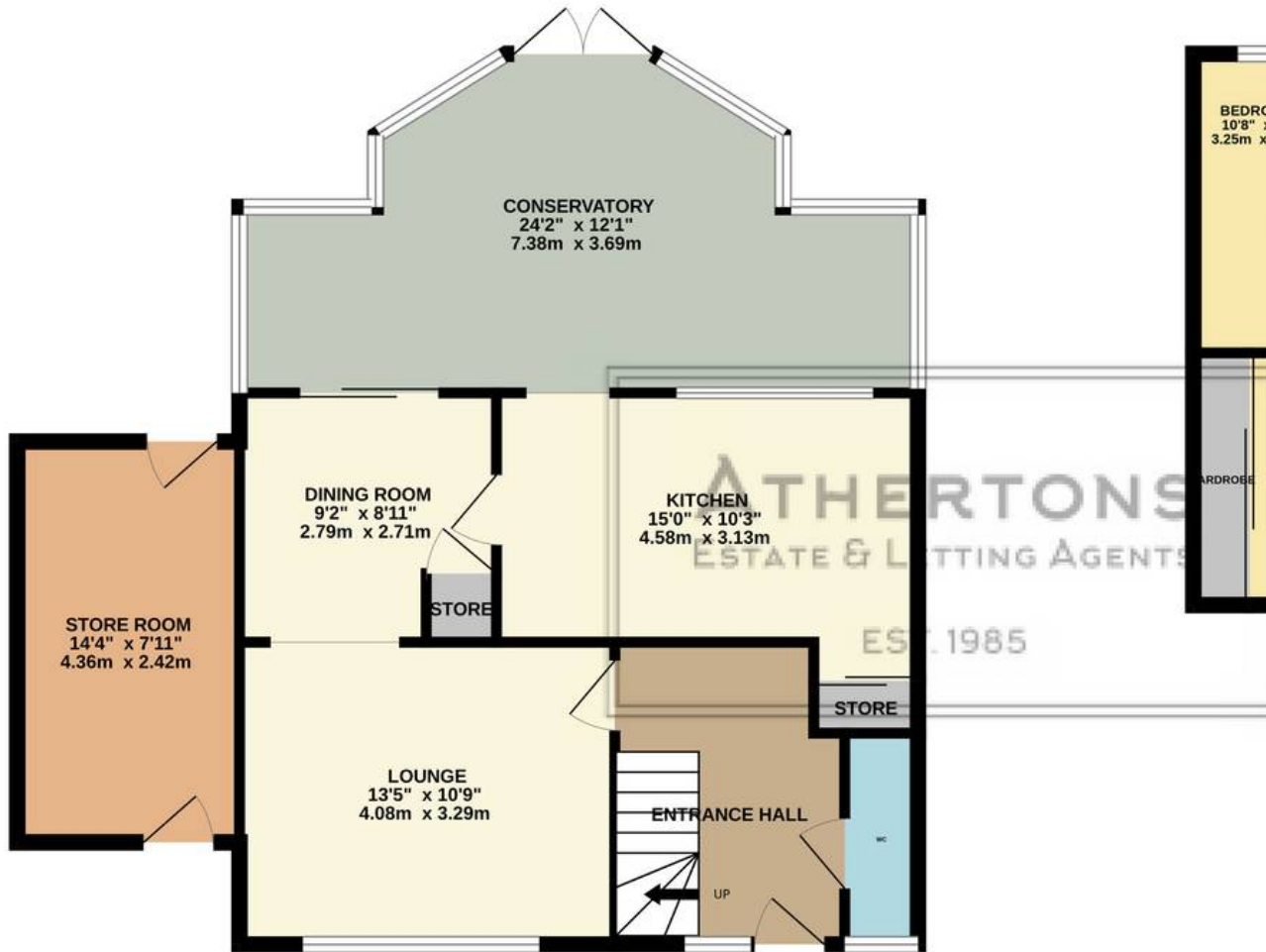
EPC Environmental Impact Rating:

- Spacious Family Home
- Four Good Sized Bedrooms
- Wonderful Conservatory
- Lounge & Dining Room
- Large Front Garden
- Private Rear Garden





GROUND FLOOR
816 sq.ft. (75.8 sq.m.) approx.



1ST FLOOR
476 sq.ft. (44.3 sq.m.) approx.



TOTAL FLOOR AREA : 1293 sq.ft. (120.1 sq.m.) approx.

Whilst every attempt has been made to ensure the accuracy of the floorplan contained here, measurements of doors, windows, rooms and any other items are approximate and no responsibility is taken for any error, omission or mis-statement. This plan is for illustrative purposes only and should be used as such by any prospective purchaser. The services, systems and appliances shown have not been tested and no guarantee as to their operability or efficiency can be given.
Made with Metropix ©2024



Athertons Estate Agents

14 Dorchester Road, Oakdale - BH15 3JY

01202 681113 • poole@athertonsea.com • www.athertonsestateagents.co.uk

