

ATHERTONS

ESTATE & LETTING AGENTS

EST. 1985

Fyfield Burbidge Close, Lytchett Matravers

Poole

Guide Price **£575,000**





Fyfield Burbidge Close

Lytchett Matravers, Poole

A splendid detached family residence in a prime Lytchett Matravers location. This exceptional home presents luminous and spacious living spaces, comprising an entrance hallway, contemporary kitchen, generous living room, dining room, and a convenient downstairs shower room. Upstairs, you will find four well-proportioned bedrooms, picturesque countryside views visible from the first and second bedrooms, and a delightful family bathroom. The exterior boasts an expansive wrap-around garden with sufficient room for a camper van or caravan, ample off-road parking, a substantial garage, and a workshop. Additional advantages encompass central heating, double glazing, and the peacefulness of a secluded cul-de-sac setting. Viewing is highly recommended.

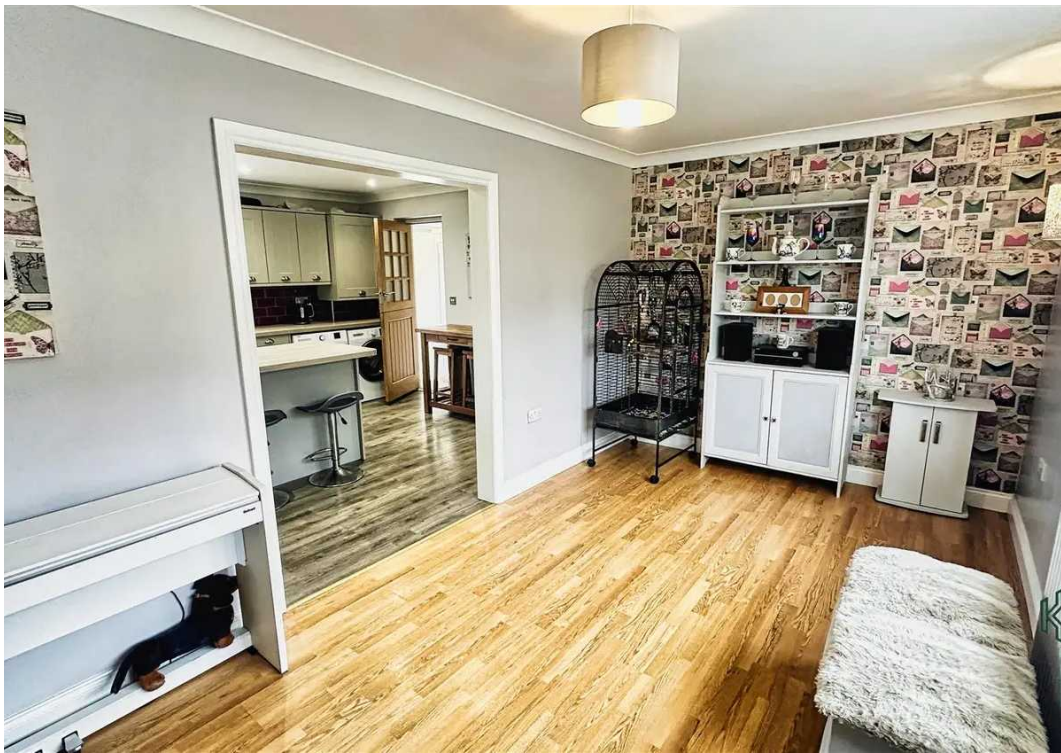
Council Tax band: D

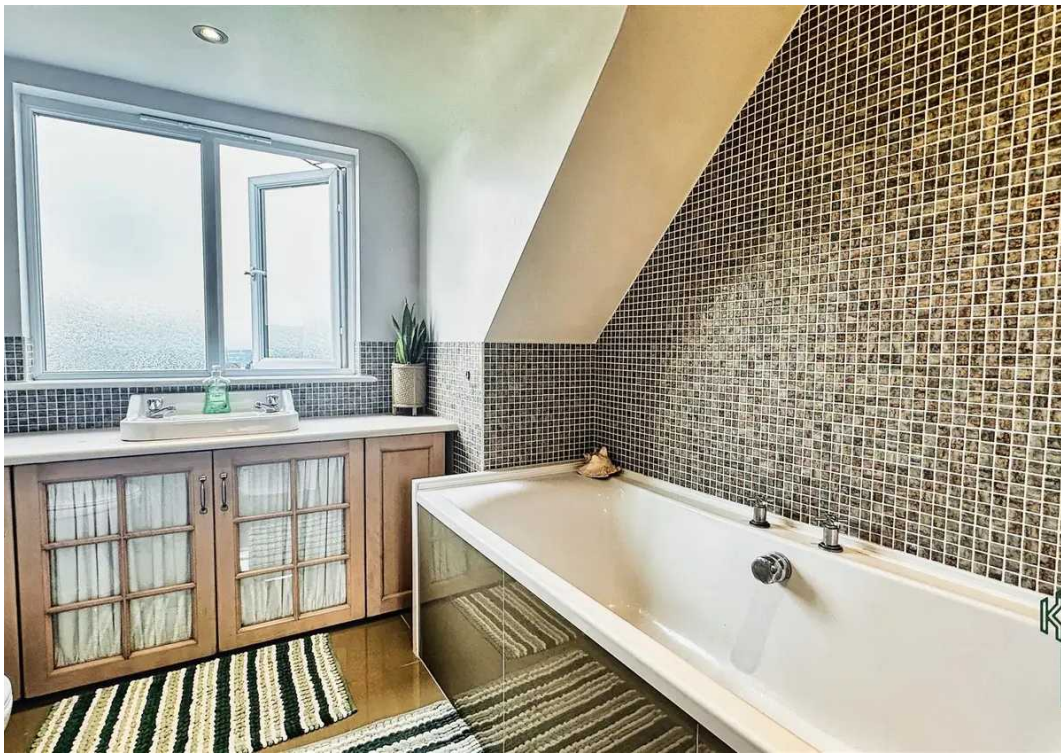
Tenure: Freehold

EPC Energy Efficiency Rating: D

EPC Environmental Impact Rating: D

- Wonderful Family Home
- Four Bedrooms
- Two Reception Rooms
- Lovely Wrap Around Garden
- Quiet Cul-de-Sac

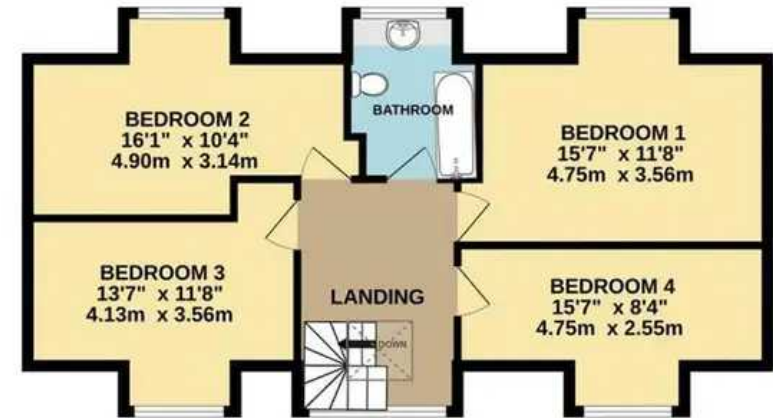




GROUND FLOOR
1148 sq.ft. (106.7 sq.m.) approx.



1ST FLOOR
657 sq.ft. (61.1 sq.m.) approx.



4 BED DETACHED

TOTAL FLOOR AREA : 1806 sq.ft. (167.8 sq.m.) approx.

Whilst every attempt has been made to ensure the accuracy of the floorplan contained here, measurements of doors, windows, rooms and any other items are approximate and no responsibility is taken for any error, omission or mis-statement. This plan is for illustrative purposes only and should be used as such by any prospective purchaser. The services, systems and appliances shown have not been tested and no guarantee as to their operability or efficiency can be given.
Made with Metropix ©2023



Athertons Estate Agents

14 Dorchester Road, Oakdale - BH15 3JY

01202 681113 • poole@athertonsea.com • www.athertonsestateagents.co.uk/

