

Finest
PROPERTIES

finest.co.uk

Lambley Bank | Scotby | Carlisle

Eden House





Accommodation in Brief

Ground Floor

Entrance Hall | Study | Kitchen | Utility Room | WC | Kitchen/Dining Room

First Floor

Two Bedroom with en suites and walk in wardrobes | Bathroom | Double Bedroom

Annexe - Ground Floor

Open Plan Kitchen/Sitting Room | Shower Room

Annexe - First Floor

Principal Bedroom with en suite and walk in wardrobe | Double Bedroom











The Property

Located in the highly desirable Lambley Bank area of Scotby, close to Carlisle, Eden House is a magnificent five-bedroom Georgian style home that offers almost 5000 sqft of living accommodation and includes a spacious one-bedroom annex with independent access. Built in 2019, it sits in around $\frac{3}{4}$ acre plot and has been furnished to an extremely high standard with luxurious and high specification fixtures and fittings throughout. All rooms are separately thermostatically controlled and there is underfloor heating throughout the ground floor.

As soon as you step into Eden House, you're immediately struck by its elegance. The entrance hall sets the tone with an impressive central ash staircase and gleaming porcelain-tiled floor. A storage cupboard provides an ideal space for cloaks and double doors provide access to the sitting room, gym/study room and through to open plan living/dining/kitchen.

The spacious sitting room has been decorated in neutral tones with decorative coving to the ceiling. An electric log fire in a granite fireplace provides an aesthetic focal point and two UPVC double glazed sash windows flood the room with natural light.

Porcelain tiles seamlessly flow from the entrance hall into a versatile space that could be perfect for a dedicated home office or gym space. These tiles also extend into the bright and luxurious open-plan kitchen/family room. A cozy seating area is arranged around a modern inset log fire, which can be conveniently controlled via smartphone. Two sets of UPVC French doors open directly onto the rear garden.

The bespoke kitchen is a chef's dream, featuring a stunning array of sleek white units with quartz countertops, including an undermounted Blanco sink with a mixer tap and waste disposal. High quality Neff integrated appliances include a wine cooler and dishwasher. A full wall of tower units houses a Neff double oven, built-in microwave and coffee machine.

The central island, with its quartz worktop, boasts a Neff six-ring induction hob paired with a Klarstein extractor unit above, offering ample space for breakfast bar seating for informal dining.

An adjoining utility Room and WC provide further storage and convenience. The utility room is fitted with a range of wall and base units and incorporates a Blanco stainless steel sink, plumbing for washing machine and space for tumble dryer.

Ascending to the first floor, a split galleried landing leads to two walk-in storage cupboards and four double bedrooms that have been impeccably decorated; two with ensuite bathrooms and dressing rooms and a stylish family bathroom.

The principal bedroom boasts UPVC double glazed French doors that open out onto the Juliette balcony that provide views across the garden and surrounding countryside. A walk-in wardrobe in this room provides an added luxury. The beautifully appointed and stylish en-suite features a large freestanding double-ended bath and separate walk-in shower. The second bedroom also features a walk-in wardrobe and an en-suite shower room with large walk-in shower, that has fully tiled porcelain walls and flooring.

A generously sized and beautifully appointed family bathroom serves the remaining two double bedrooms. Elegantly adorned with porcelain tiles, this luxurious space features a large freestanding bath and a spacious walk-in shower.







The Annexe

Adjoining the main house with independent access is an impressive one-bedroom annexe. Externally it has a separate door to the main property, but it can also be accessed via a lockable door in bedroom three. This annexe is ideal for those looking for multi-generational living, to generate an income or could easily be used as an extension of the main home.

The entrance hall features a modern staircase leading to the first floor with open steps and glazed balustrade and access to the ground floor shower room with WC. Wood effect flooring with underfloor heating extends through to the large open plan kitchen/dining and sitting room.

The kitchen is fitted with stylish black units, contrasted beautifully by pristine white quartz countertops. A Blanco sink with a mixer tap is seamlessly integrated into the design, alongside a double fridge/freezer and a Bosch four-ring induction hob with an extractor hood above. The space is further enhanced by a suite of integrated high-quality appliances, including a washing machine, dishwasher, and wine cooler. Tower units house a Bosch oven, built-in microwave, and coffee machine. A peninsula breakfast bar not only offers ample dining space but also serves as a stylish centrepiece. A living area is thoughtfully arranged around an electric log effect fire and there are UPVC double glazed French doors that open out onto the rear garden.

On the first-floor landing there is a large storage cupboard with mirror fronted sliding doors and access to the annexe master bedroom suite. The spacious and inviting bedroom features UPVC double glazed French doors to the Juliette balcony overlooking the garden, a walk-in wardrobe and modern en-suite with walk-in shower.





Externally

Eden House sits in approximately $\frac{3}{4}$ acre plot and is approached via an expansive driveway, providing off-road parking for multiple vehicles. A detached triple garage with automatic doors is designed to accommodate three cars. This space is versatile, with lighting and power, and could be used as a substantial workshop or storage area.

Access to the rear garden is conveniently provided by side gates on either side of the house. The rear garden, covering approximately half an acre, is predominantly laid to lawn and bordered by mature beech trees, offering privacy and a serene backdrop. A spacious sandstone patio area serves as the perfect setting for al fresco dining and entertaining. There is a further area to the rear of the garden, accessed via a wooden gate, with raised vegetable plots and garden/potting shed.

For added convenience and security, the property is equipped with strategically placed sensor lights, including a floodlight for the rear garden. The Dahua security camera system, installed at both the front and rear of the property, further ensures the safety and peace of mind of its residents.





Local Information

Eden House is situated in the charming village of Scotby, which offers a range of conveniences including a village shop, a primary school, and a welcoming pub. The nearby city of Carlisle provides additional services with large supermarkets, a hospital, and a wide selection of shops and eateries. Carlisle also offers comprehensive cultural, educational, recreational, and shopping facilities.

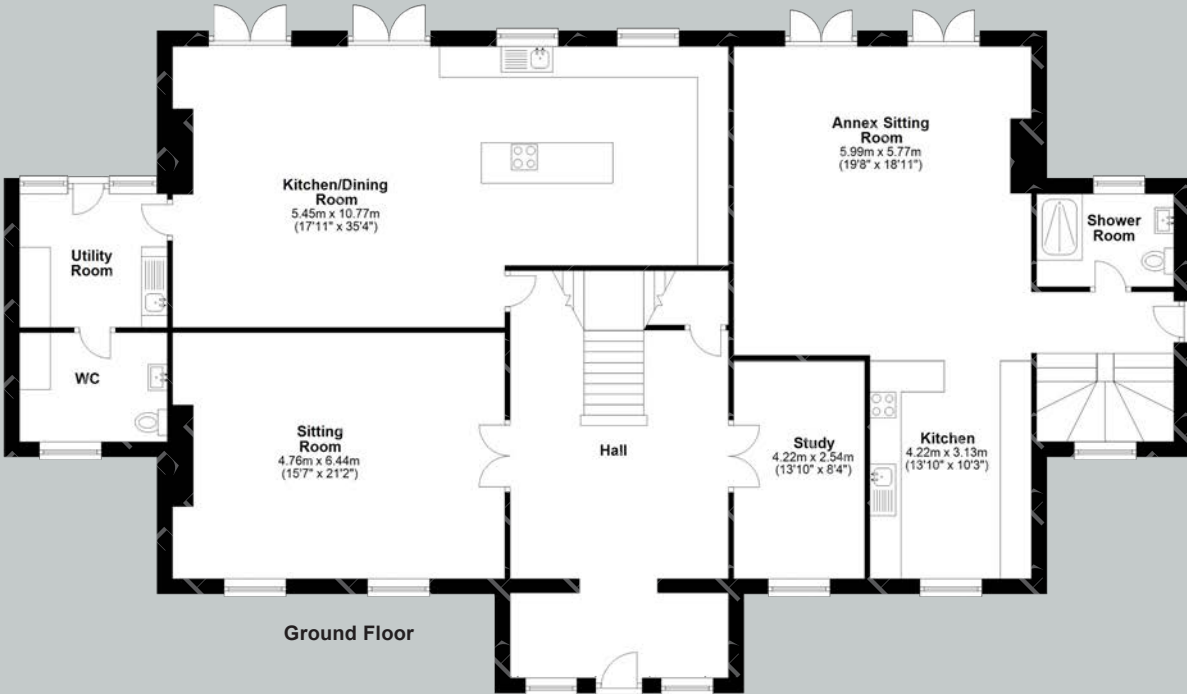
For schooling, Scotby has its own primary school, and there are further educational options in Carlisle, including both comprehensive and private schools.

For commuters, Scotby provides easy access to the A69 and M6, making both Carlisle and Newcastle accessible for work or leisure. The nearby Carlisle train station also offers regular services to major cities across the UK, and Newcastle Airport is within reasonable driving distance for international travel.



Floor Plans

Total area: approx. 416.9 sq. metres
(4487.9 sq. feet)



Google Maps

what3words



///labels.cuts.formed

Wayleaves, Easements & Rights of Way

The property is being sold subject to all existing wayleaves, easements and rights of way, whether or not specified within the sales particulars.

Services

Mains electric, water and drainage. Gas central heating.

Underfloor heating on the ground floor.

Postcode

Council Tax

EPC

Tenure

CA4 8BX

Band G

Rating B

Freehold

Viewings Strictly by Appointment

T: 0330 111 2266

E: contact@finest.co.uk





Finest

PROPERTIES

15 Market Place | Corbridge | Northumberland | NE45 5AW

0330 111 2266 | contact@finest.co.uk

finest.co.uk

IMPORTANT INFORMATION Finest Properties, for themselves and for the Vendors and Lessors of this property whose Agents they are give notice that: (1) The particulars are set out as a general outline only for the guidance of intended purchasers or lessees and do not constitute, nor constitute part of, an offer or contract; (2) All descriptions, dimensions, reference to condition and necessary permissions for use and occupation and other details are given without responsibility and any intending purchasers or tenants should not rely on them as statements or representations of fact, but must satisfy themselves by inspection or otherwise as to the correctness of each of them; (3) No person in the employment of Finest Properties, has any authority to make or give any representation or warranty whatever in relation to this property.