

A three-story terraced house with a light-colored stone facade. The ground floor features large windows and two central entrances with black doors. The upper floors have smaller, uniform windows. A large, leafless tree stands to the left of the house. In the foreground, a black wrought-iron fence with decorative finials runs across the frame, enclosing a small green lawn and a stone-paved path leading to the entrance.

*Symonds
Taylor*

Flat B, 46 Leazes Terrace, Newcastle Upon Tyne

Newcastle Upon Tyne

Guide Price **£325,000**



Flat B

46 Leazes Terrace, Newcastle Upon Tyne

This three storey apartment is located within this beautiful Georgian terrace, which is positioned in the heart of Newcastle city centre and is ideally suited for professionals, couples, and even those looking for an investment opportunity due to having the RVI & University on hand.

Accommodation comprises:

Ground Floor: Communal Hallway.

First Floor: Communal Landing, Hallway, Sitting Room, Kitchen.

Second Floor: Landing, Principal Bedroom, Bedroom 2, Bathroom/WC.

Third Floor: Landing, Bedroom 3, Bedroom 4.

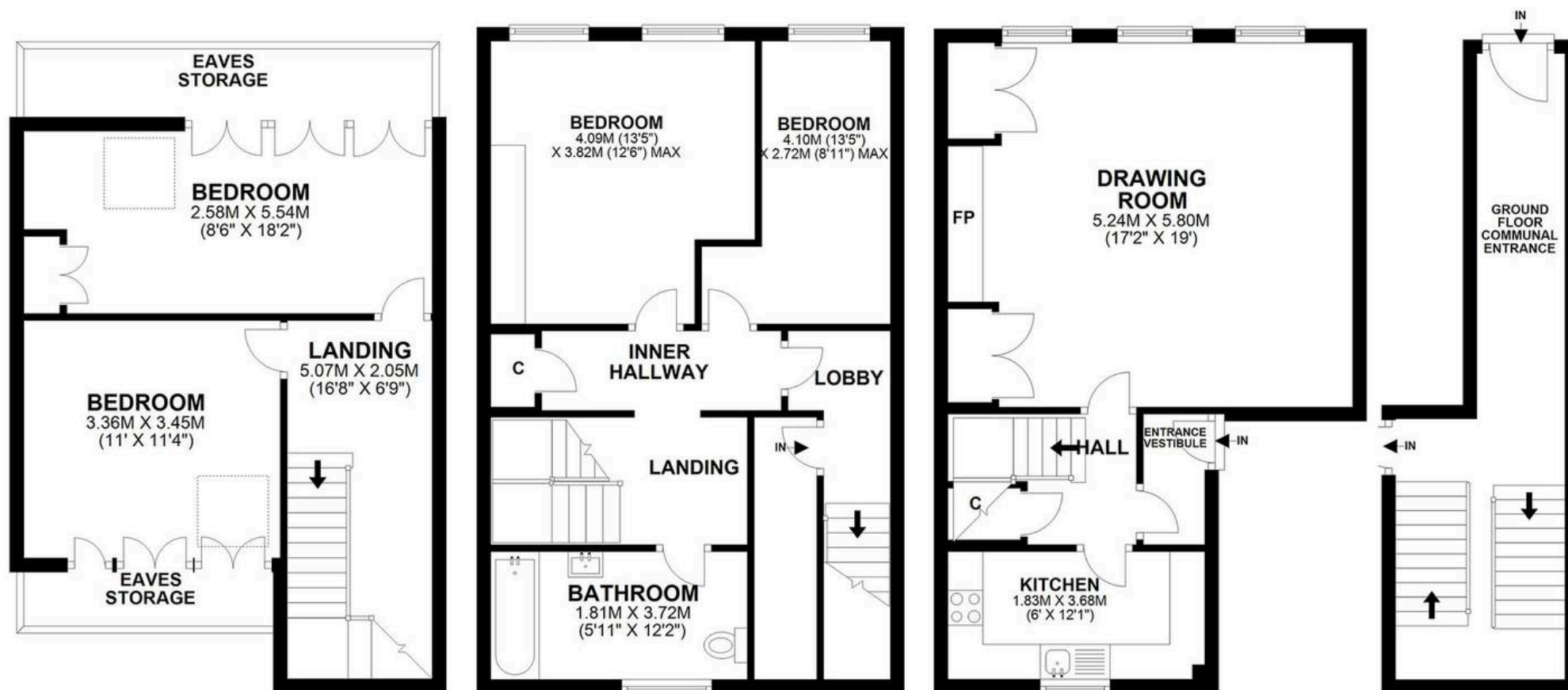
Outside: Communal Front Garden, Designated Parking.

Council Tax band: D

Tenure: Leasehold

EPC Energy Efficiency Rating: E





APPROXIMATE GROSS INTERNAL AREA 131 SQ M 1408 SQ FT - NOT TO SCALE - FOR ILLUSTRATIVE PURPOSES ONLY
All measurements and fixtures including doors and windows are approximate and should be independently verified.





Symonds Taylor

101 St. Georges Terrace, Jesmond – NE2 2DN

0191 338 9999 • hello@symondstaylor.co.uk • www.symondstaylor.co.uk

All descriptions, plans or references to condition are given in good faith only. Whilst every endeavour is made to ensure accuracy, please check with us on any points of especial importance to you.