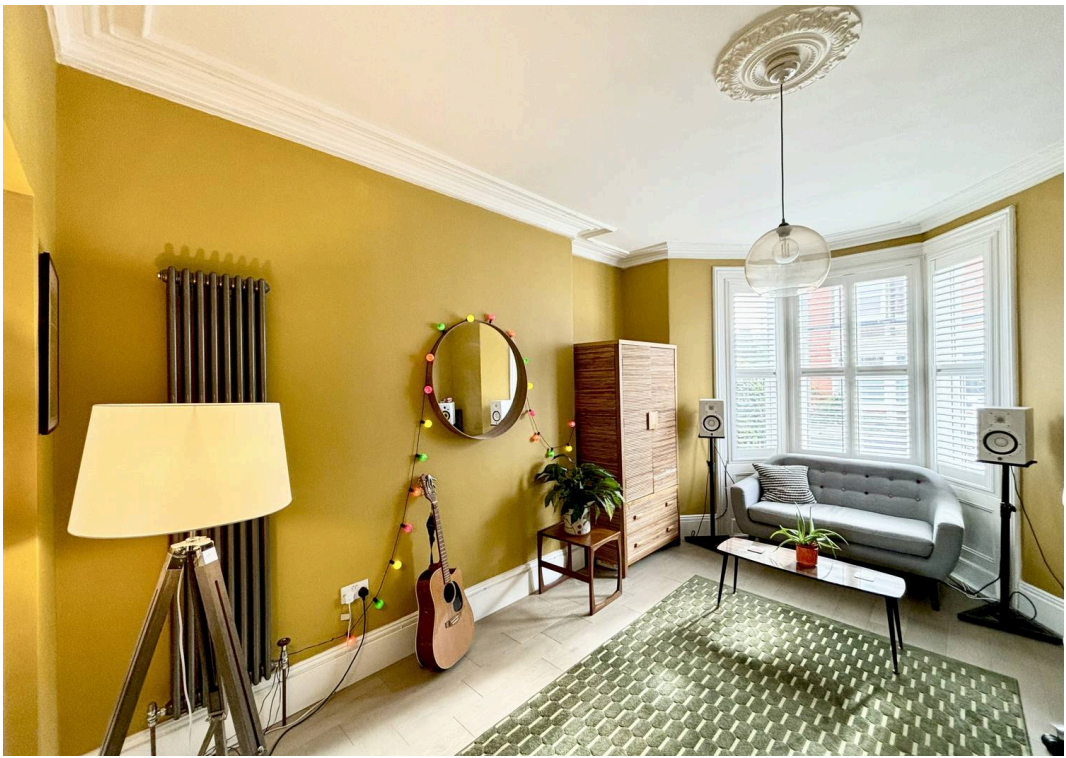


*Symonds
Taylor*

49 Myrtle Grove, Jesmond

Newcastle Upon Tyne

Offers Over **£450,000**



49 Myrtle Grove

Jesmond, Newcastle Upon Tyne

This 3 storey end terraced period family home is located in the heart of Jesmond with versatile and generous accommodation that will suit a wide range of buyers and which has access throughout the city.

Accommodation comprises:

Ground floor: Entrance vestibule, hallway, sitting room, dining room, kitchen, cloakroom/wc.

First floor: Landing, principal bedroom, bedroom 2, bedroom 3, family bathroom/wc.

Second floor: Landing, bedroom 4, bedroom 5/home office, shower room/wc.

Outside: Front town garden, rear courtyard, outbuilding.

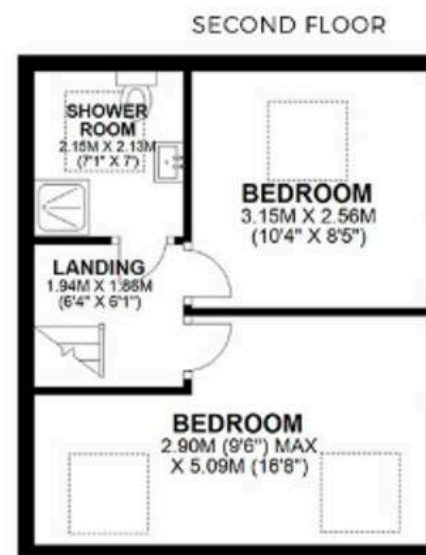
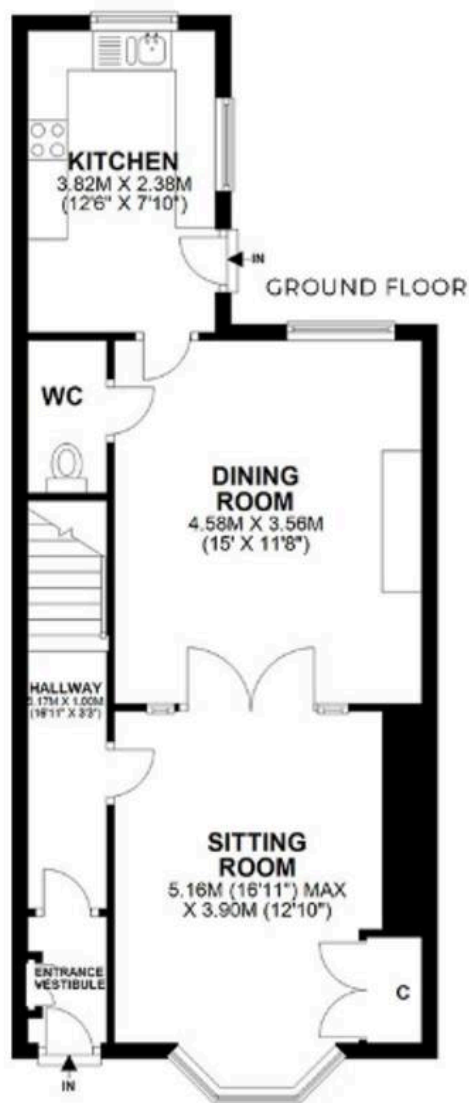
Council Tax band: D

Tenure: Freehold

EPC Energy Efficiency Rating: D

EPC Environmental Impact Rating: E





49 MYRTLE GROVE, JESMOND, NE2 3HT

APPROXIMATE GROSS INTERNAL AREA 140 SQ M 1511 SQ FT - NOT TO SCALE - FOR ILLUSTRATIVE PURPOSES ONLY
All measurements and fixtures including doors and windows are approximate and should be independently verified.





Symonds Taylor

101 St. Georges Terrace, Jesmond – NE2 2DN

0191 338 9999 • hello@symondstaylor.co.uk • www.symondstaylor.co.uk

All descriptions, plans or references to condition are given in good faith only. Whilst every endeavour is made to ensure accuracy, please check with us on any points of especial importance to you.