

*Symonds
Taylor*

23 Myrtle Grove, Jesmond

Newcastle Upon Tyne

Offers Over **£220,000**



23 Myrtle Grove

Jesmond, Newcastle Upon Tyne

This remodelled and refurbished ground floor flat has a contemporary feel that is ideal for first time buyers and couples. With 2 double bedrooms and a lovely open plan living space that opens to a sunny rear courtyard all on one of the most popular residential streets in the heart of central Jesmond.

Accommodation comprises:

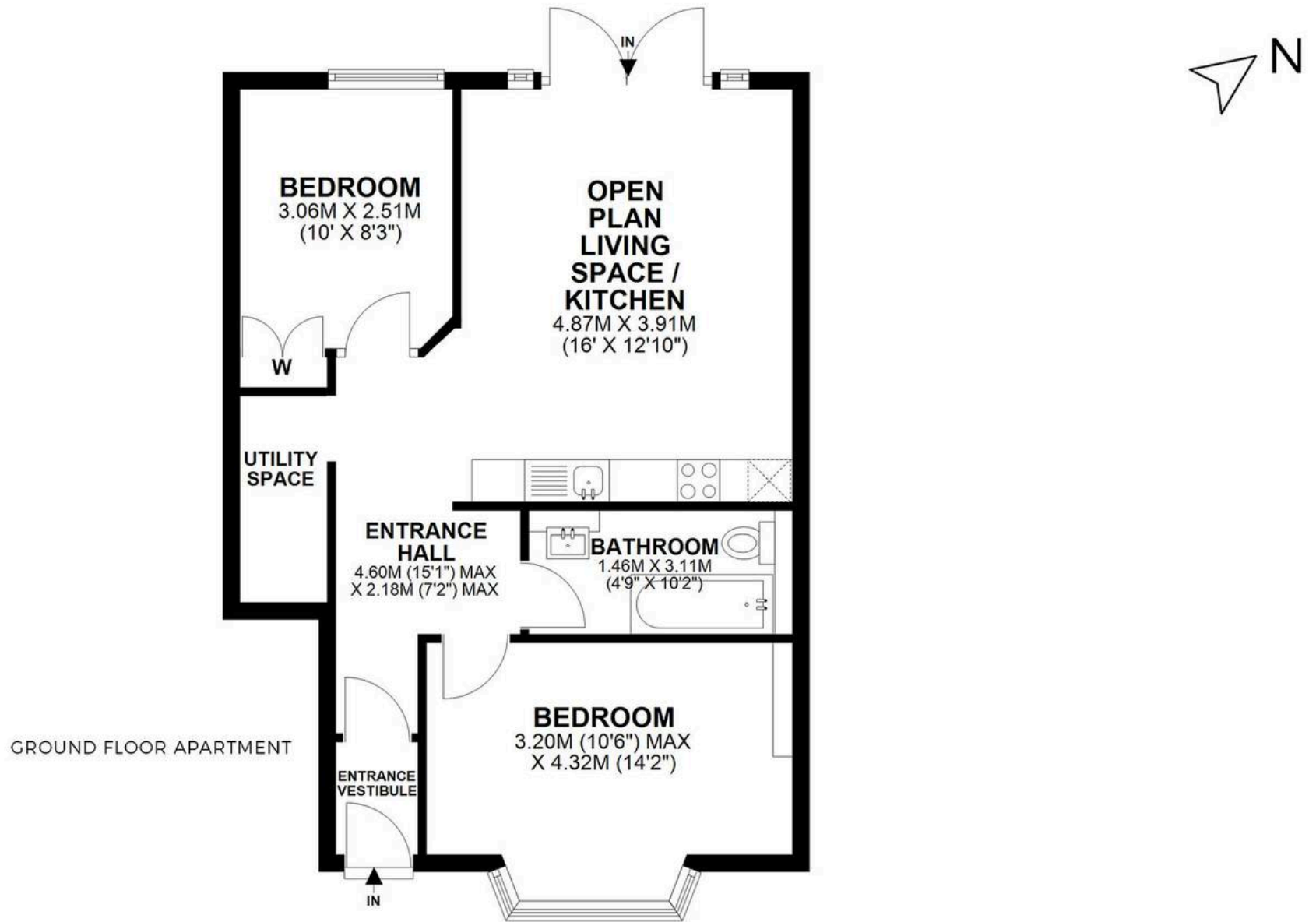
Ground floor: Entrance vestibule, hallway, open plan living room and kitchen, principal bedroom, bedroom 2, bathroom/wc.

Outside: Front town garden, shared rear courtyard, raised decked, gravelled area, gate to service lane.

Council Tax band: A

Tenure: Leasehold





GROUND FLOOR APARTMENT

23 MYRTLE GROVE, JESMOND, NE2 3HT

APPROXIMATE GROSS INTERNAL AREA 57 SQ M 609 SQ FT - NOT TO SCALE - FOR ILLUSTRATIVE PURPOSES ONLY
All measurements and fixtures including doors and windows are approximate and should be independently verified.

*Symonds
Taylor*



Symonds Taylor

101 St. Georges Terrace, Jesmond – NE2 2DN

0191 338 9999 • hello@symondstaylor.co.uk • www.symondstaylor.co.uk

All descriptions, plans or references to condition are given in good faith only.

Whilst every endeavour is made to ensure accuracy, please check with us on any points of especial importance to you.