



*Symonds
Taylor*

15 The Grove, Gosforth

Newcastle Upon Tyne

Guide Price **£1,200,000**





15 The Grove

Gosforth, Newcastle Upon Tyne

This beautiful and impressive Grade II Listed period property dates back to circa 1850 and is a wonderful family home located on one of the finest streets in Gosforth with gardens to front and rear, double garage and off street parking that will require an early internal inspection as will have strong regional and national interest.

Accommodation comprises:

Ground floor: Entrance vestibule, hallway, sitting room, family room, dining kitchen, utility room, cloakroom/wc, plant room.

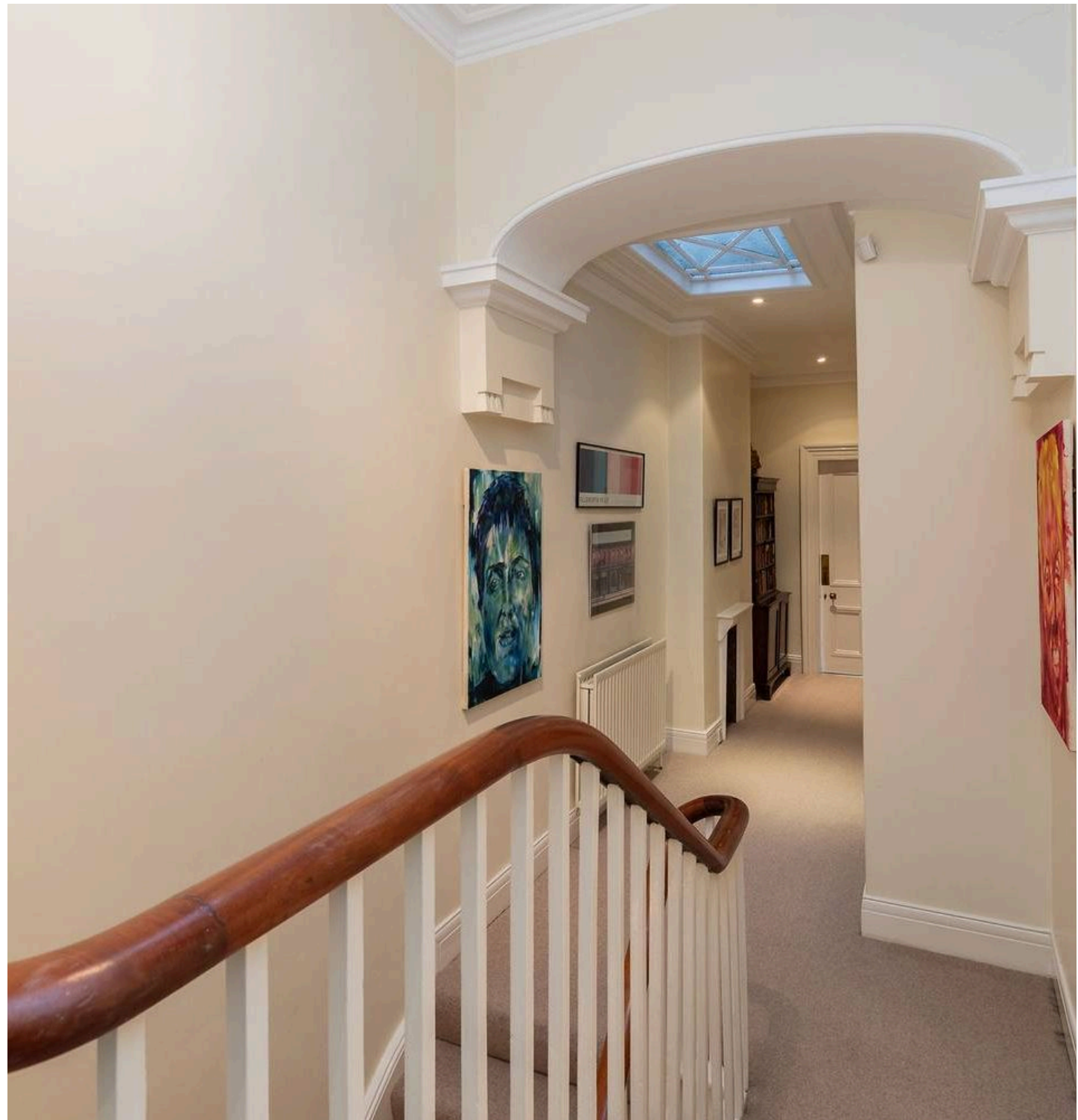
First floor: Landing, principal bedroom, ensuite shower room, bedroom 2, bedroom 3, family bathroom.

Second floor: Landing, bedroom 4, ensuite shower room.

Outside: South facing front lawn garden, paved terrace, rear courtyard, double driveway, double garage, rear lawn garden, raised vegetable beds, greenhouse.

Council Tax band: G

Tenure: Freehold





15 THE GROVE, GOSFORTH, NE3 1NE

APPROXIMATE GROSS INTERNAL AREA 266 SQ M 2867 SQ FT - NOT TO SCALE - FOR ILLUSTRATIVE PURPOSES ONLY
All measurements and fixtures including doors and windows are approximate and should be independently verified.







Symonds Taylor

101 St. Georges Terrace, Jesmond – NE2 2DN

0191 338 9999 • hello@symondstaylor.co.uk • www.symondstaylor.co.uk

All descriptions, plans or references to condition are given in good faith only. Whilst every endeavour is made to ensure accuracy, please check with us on any points of especial importance to you.