

*Symonds  
Taylor*



**11 Bemersyde Drive, Jesmond**

Newcastle Upon Tyne

Offers Over **£850,000**







# 11 Bemersyde Drive

Jesmond, Newcastle Upon Tyne

This impressive double fronted semi detached family home is located in the heart of Jesmond with 3 floors of accommodation that has been extended to create a wonderful versatile and spacious property in a highly sought after location that will have both a regional and national appeal.

Accommodation comprises:

Ground floor: Entrance vestibule, reception hallway, cloakroom/wc, sitting room, open plan family room & dining kitchen, utility room.

First floor: Landing, principal bedroom, ensuite shower room, roof terrace, bedroom 2, bedroom 3, study, family bathroom, separate wc.

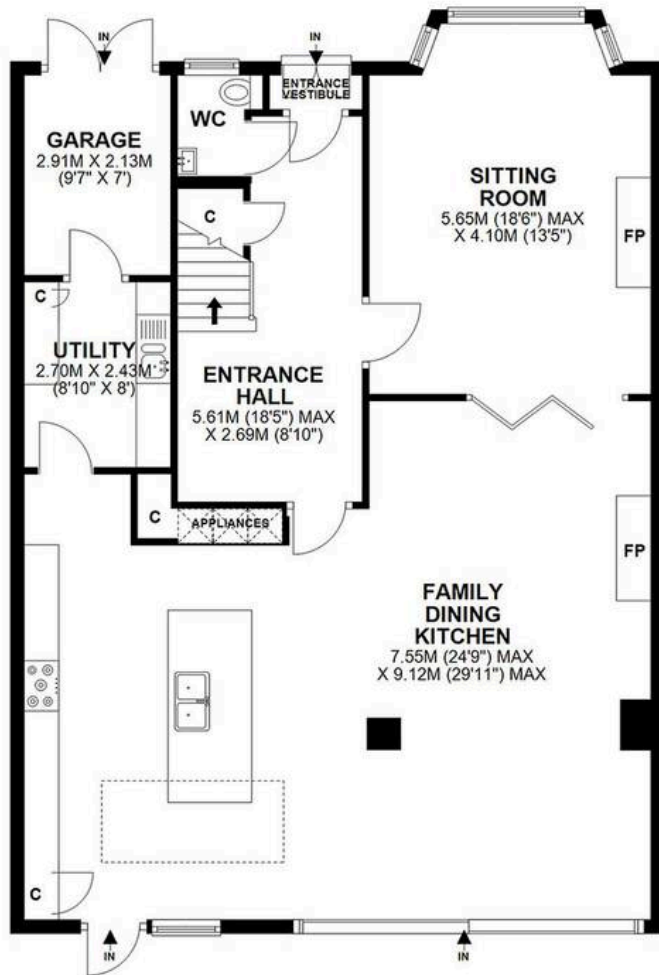
Second floor: Landing, bedroom 4, bedroom 5, shower room.

Outside: Front town garden, driveway, off street parking, garage/store, rear lawn garden, 2 raised decked areas.

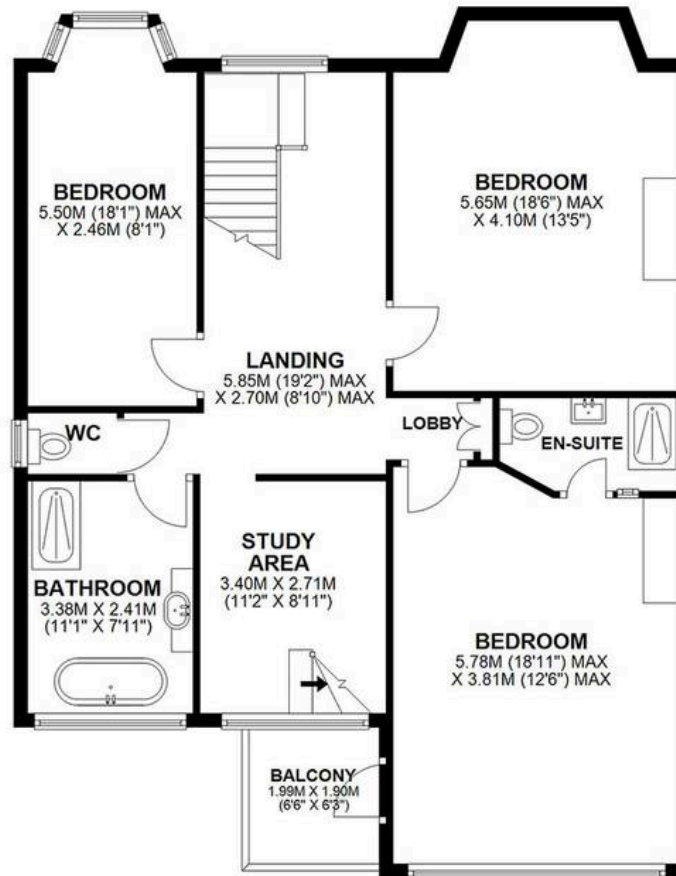
Council Tax band: G

Tenure: Freehold

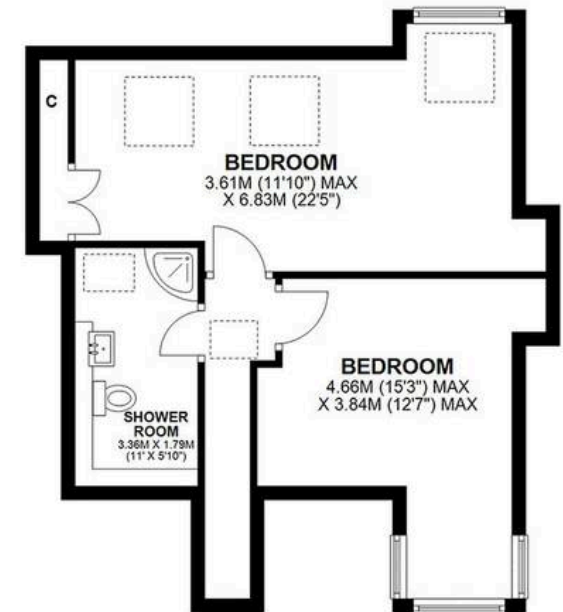




GROUND FLOOR



FIRST FLOOR



SECOND FLOOR

**11 BEMERSYDE DRIVE, JESMOND, NE2 2HL**

APPROXIMATE GROSS INTERNAL AREA 270 SQ M 2907 SQ FT - NOT TO SCALE - FOR ILLUSTRATIVE PURPOSES ONLY  
All measurements and fixtures including doors and windows are approximate and should be independently verified.









## Symonds Taylor

101 St. Georges Terrace, Jesmond – NE2 2DN

0191 338 9999 • [hello@symondstaylor.co.uk](mailto:hello@symondstaylor.co.uk) • [www.symondstaylor.co.uk](http://www.symondstaylor.co.uk)

All descriptions, plans or references to condition are given in good faith only. Whilst every endeavour is made to ensure accuracy, please check with us on any points of especial importance to you.