

*Symonds
Taylor*

13 North Avenue, Gosforth

Newcastle Upon Tyne

Offers Over £1,000,000



13 North Avenue

Gosforth, Newcastle Upon Tyne

This impressive, substantial semi-detached period family home is located in the heart of Gosforth. The generous rooms offer a substantial versatility. There is ample off-street parking and gardens at both the front and back. This property will appeal to a wide range of buyers, regional and national.

Accommodation comprises:

Ground floor: Entrance porch, reception hallway, cloakroom, toilet, drawing room, sitting room, dining room, kitchen.

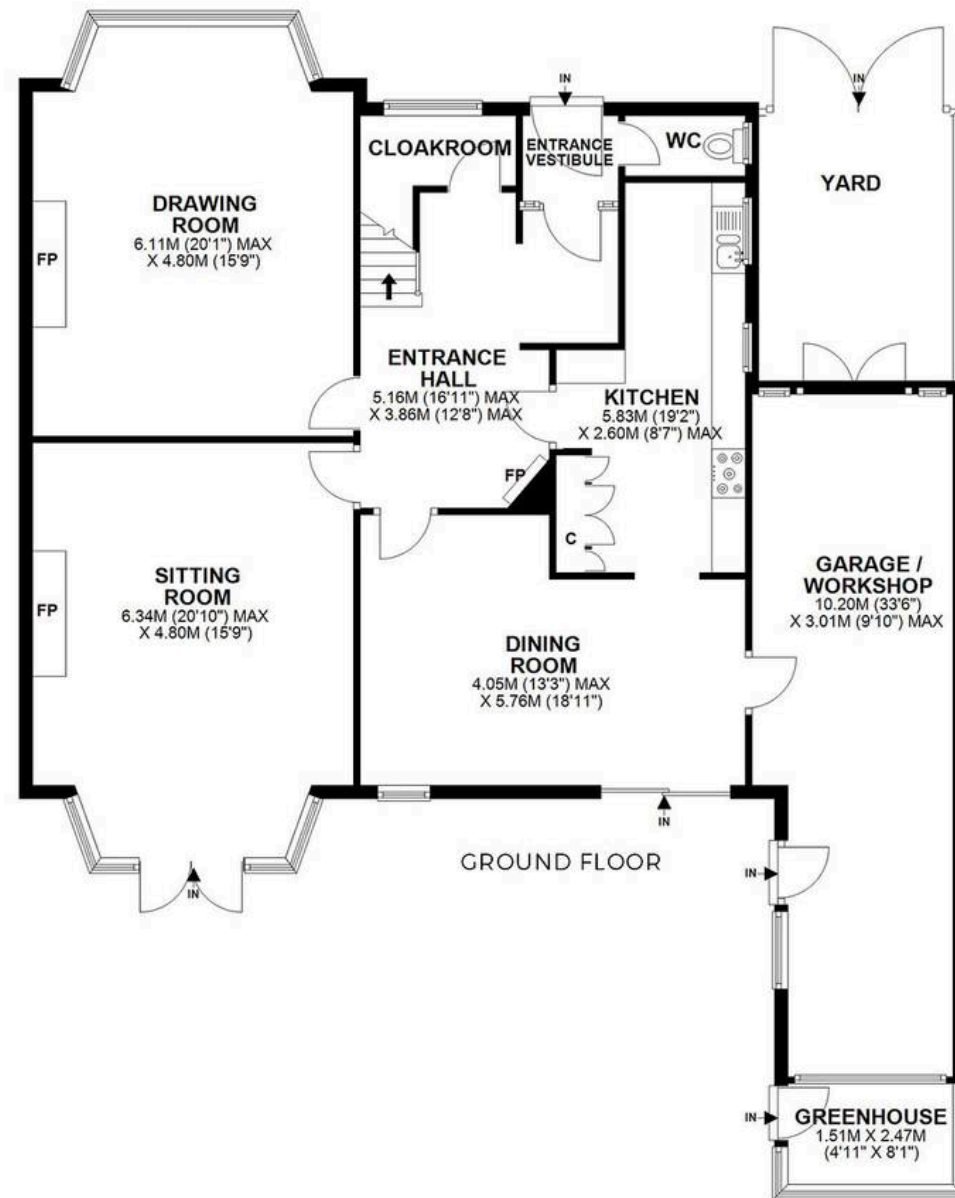
First floor: Landing, principal bedroom, Jack & Jill ensuite bathroom, bedroom 2, bedroom 3, bedroom 4, family bathroom, utility cupboard, drying cupboard.

Outside: Front town garden with pear trees, double driveway, side courtyard, attached garage, rear garden, potting shed, paved patio, well stocked mature borders, raised beds, apple trees and fruit bushes.

Council Tax band: F

Tenure: Freehold





13 NORTH AVENUE, GOSFORTH, NE3 4DT

APPROXIMATE GROSS INTERNAL AREA 214 SQ M 2302 SQ FT - NOT TO SCALE - FOR ILLUSTRATIVE PURPOSES ONLY
All measurements and fixtures including doors and windows are approximate and should be independently verified.





*Symonds
Taylor*



Symonds Taylor

101 St. Georges Terrace, Jesmond – NE2 2DN

0191 338 9999 • hello@symondstaylor.co.uk • www.symondstaylor.co.uk

All descriptions, plans or references to condition are given in good faith only. Whilst every endeavour is made to ensure accuracy, please check with us on any points of especial importance to you.