

*Symonds
Taylor*

38 Lodore Road, Jesmond

Newcastle Upon Tyne

Offers Over **£495,000**



38 Lodore Road

Jesmond, Newcastle Upon Tyne

This is a most impressive refurbished 3 bedroom mid terraced period town house that retains so many original features, enjoys generous room sizes, high level of finish and is positioned in an excellent location in High West Jesmond with direct access into the city centre from Ilford Road Metro. High demand is expected so an early internal inspection is required.

Accommodation comprises:

Ground floor: Entrance vestibule, hallway, sitting room, dining room, breakfasting kitchen.

First floor: Landing, principal bedroom, bedroom 2, bedroom 3, family bathroom.

Outside: Front town garden, rear south west paved courtyard, store.

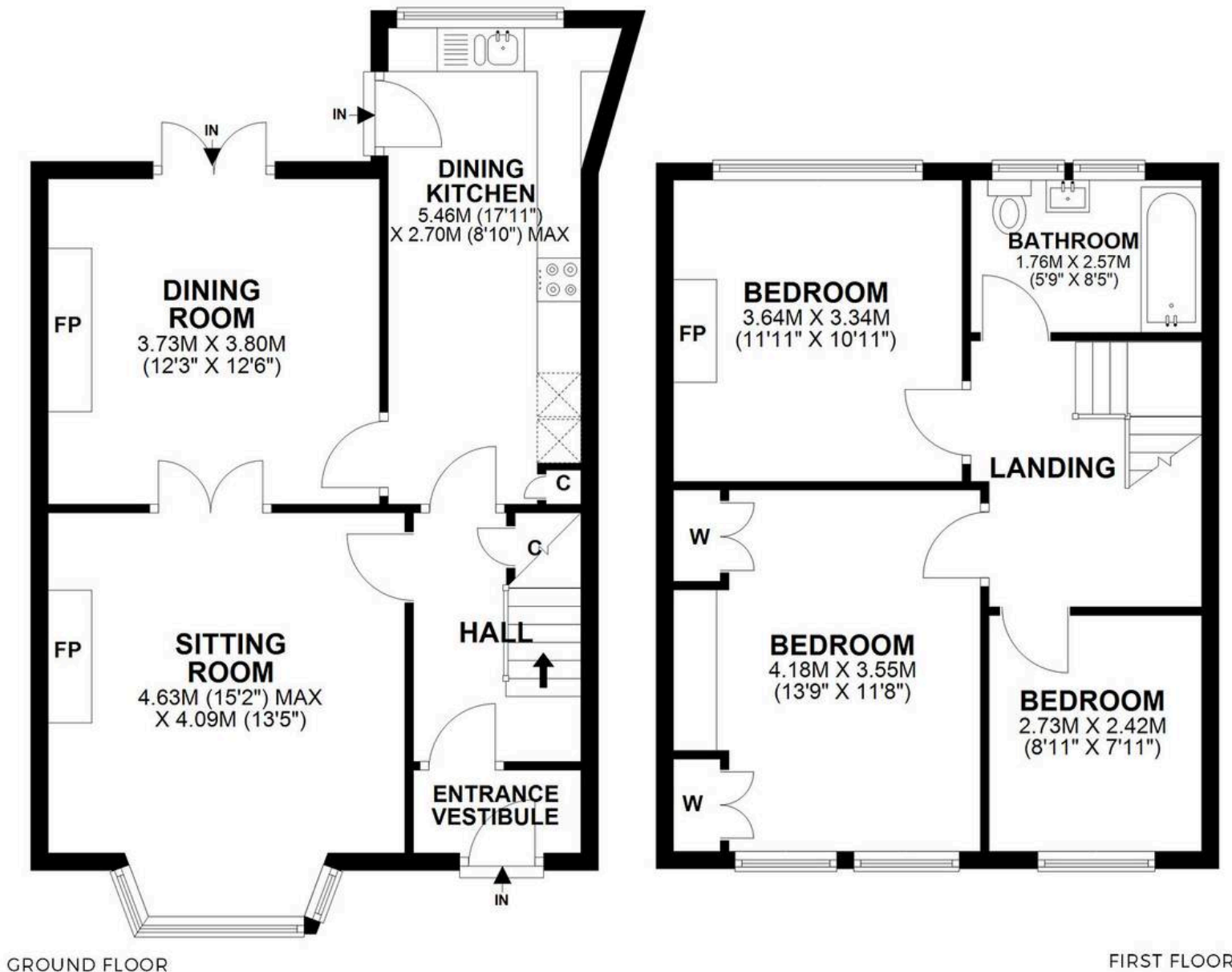
Council Tax band: D

Tenure: Freehold

EPC Energy Efficiency Rating: D

EPC Environmental Impact Rating: E





38 LODORE ROAD, NEWCASTLE-UPON-TYNE, NE2 3NN

APPROXIMATE GROSS INTERNAL AREA 98 SQ M 1057 SQ FT - NOT TO SCALE - FOR ILLUSTRATIVE PURPOSES ONLY
All measurements and fixtures including doors and windows are approximate and should be independently verified.





Symonds Taylor

101 St. Georges Terrace, Jesmond - NE2 2DN

0191 338 9999 • hello@symondstaylor.co.uk • www.symondstaylor.co.uk

All descriptions, plans or references to condition are given in good faith only. Whilst every endeavour is made to ensure accuracy, please check with us on any points of especial importance to you.