



*Symonds
Taylor*

Tudor Lodge, Roseworth Crescent, Gosforth

Newcastle Upon Tyne

Guide Price £1,250,000





Tudor Lodge, Roseworth Crescent

Gosforth, Newcastle Upon Tyne

Tudor Lodge is a most impressive and versatile detached family home was built in 1988 enjoying a generous corner site on an exclusive road in the heart of central Gosforth with amazing rear garden which will appeal to a wide range of regional and national buyers and where an early internal inspection is essential to fully appreciate all that this home offers.

Accommodation comprises:

Ground floor: Reception hallway, cloakroom/wc, drawing room, sitting room/home office, open plan family room & dining kitchen, utility room, gym/store.

First floor: Gallery landing, principal bedroom, dressing area, ensuite bathroom, bedroom 2, ensuite shower room, bedroom 3, bedroom 4, bedroom 5, family bathroom.

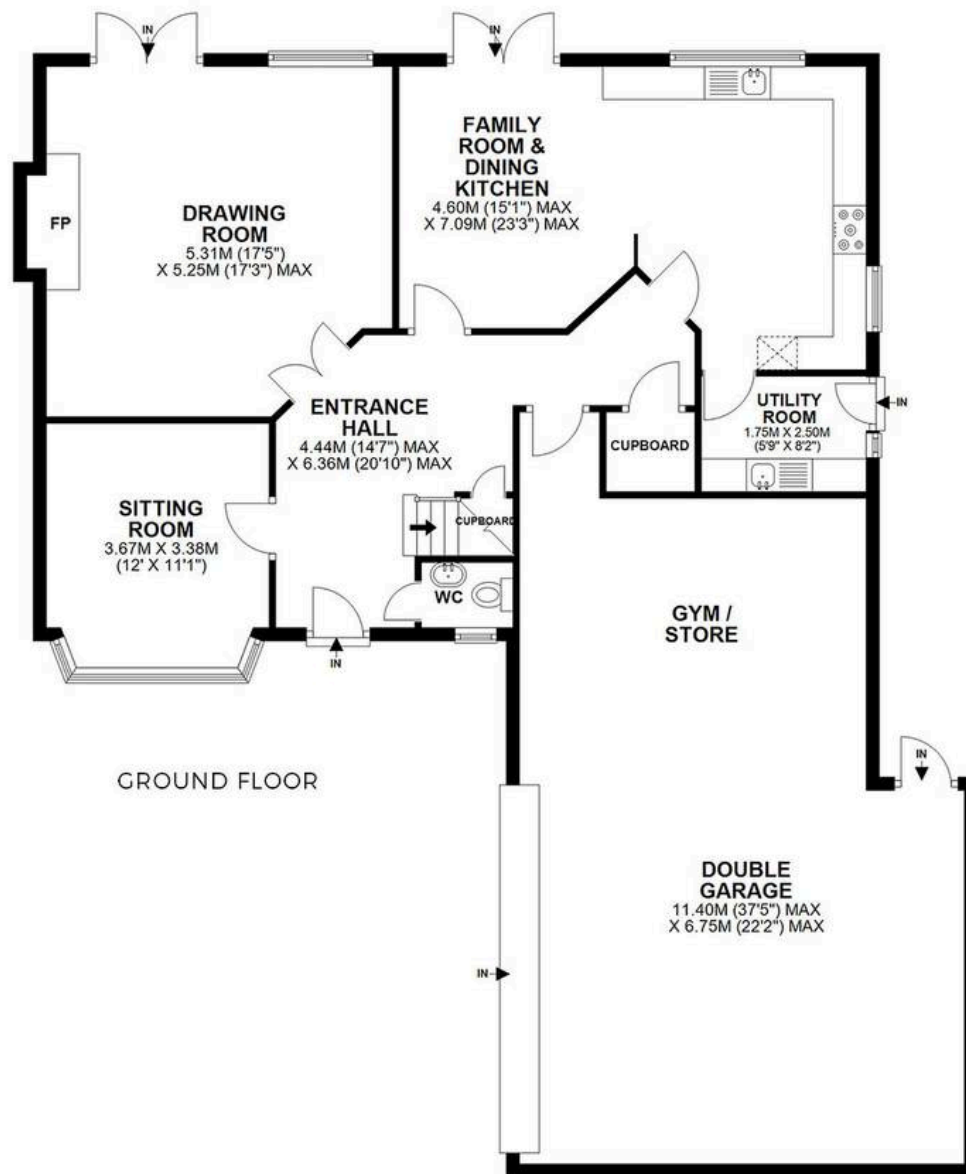
Outside: Block paved driveway, ample off street parking, attached double garage, walled rear lawn garden, mature borders, paved sun terrace.

Council Tax band: G

Tenure: Freehold

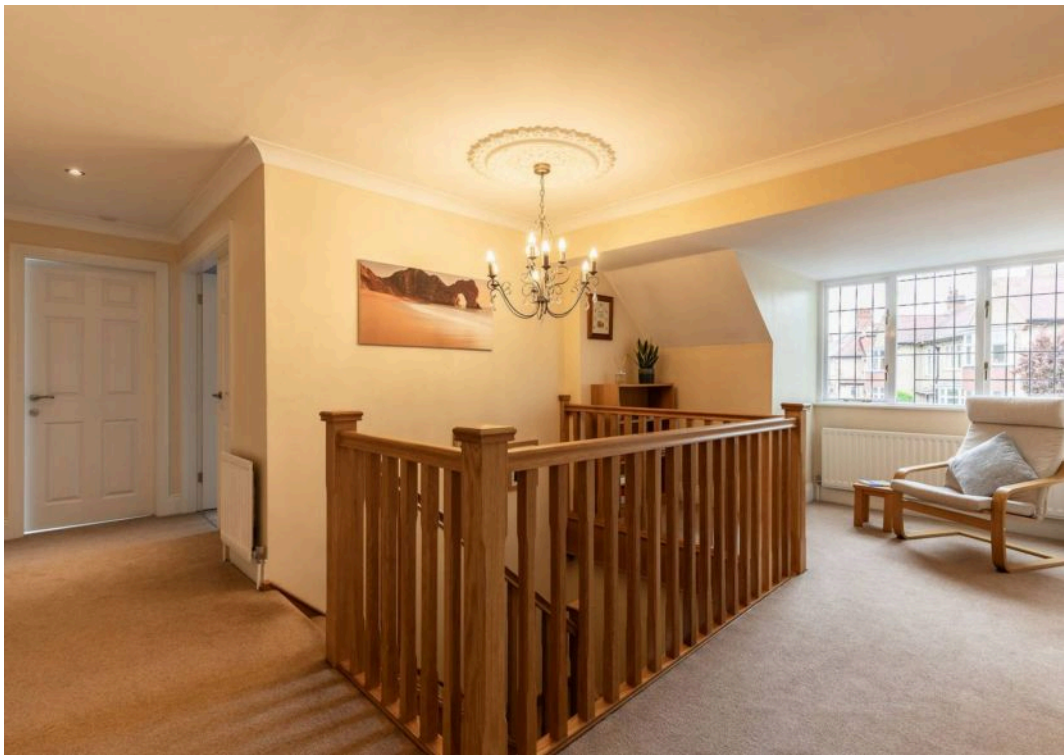
EPC Energy Efficiency Rating: C





TUDOR LODGE, ROSEWORTH CRESCENT, GOSFORTH, NE3 1NR

APPROXIMATE GROSS INTERNAL AREA 281 SQ M 3025 SQ FT - NOT TO SCALE - FOR ILLUSTRATIVE PURPOSES ONLY
All measurements and fixtures including doors and windows are approximate and should be independently verified.







Symonds Taylor

101 St. Georges Terrace, Jesmond – NE2 2DN

0191 338 9999 • hello@symondstaylor.co.uk • www.symondstaylor.co.uk

All descriptions, plans or references to condition are given in good faith only. Whilst every endeavour is made to ensure accuracy, please check with us on any points of especial importance to you.