

*Symonds
Taylor*

South View, 8 Elford Farm Cottages, Seahouses

Northumberland

Guide Price £750,000



South View, 8 Elford Farm Cottages

Seahouses, Northumberland

South View is a beautifully presented and versatile property that's been a successful holiday home for many years and enjoys a great setting close to the coast between Seahouses and Bamburgh ideal as a business or wonderful family home.

Accommodation comprises:

Ground floor: Reception hallway, sitting room, dining kitchen, open plan living area, utility room, bedroom 4, shower room/wc.

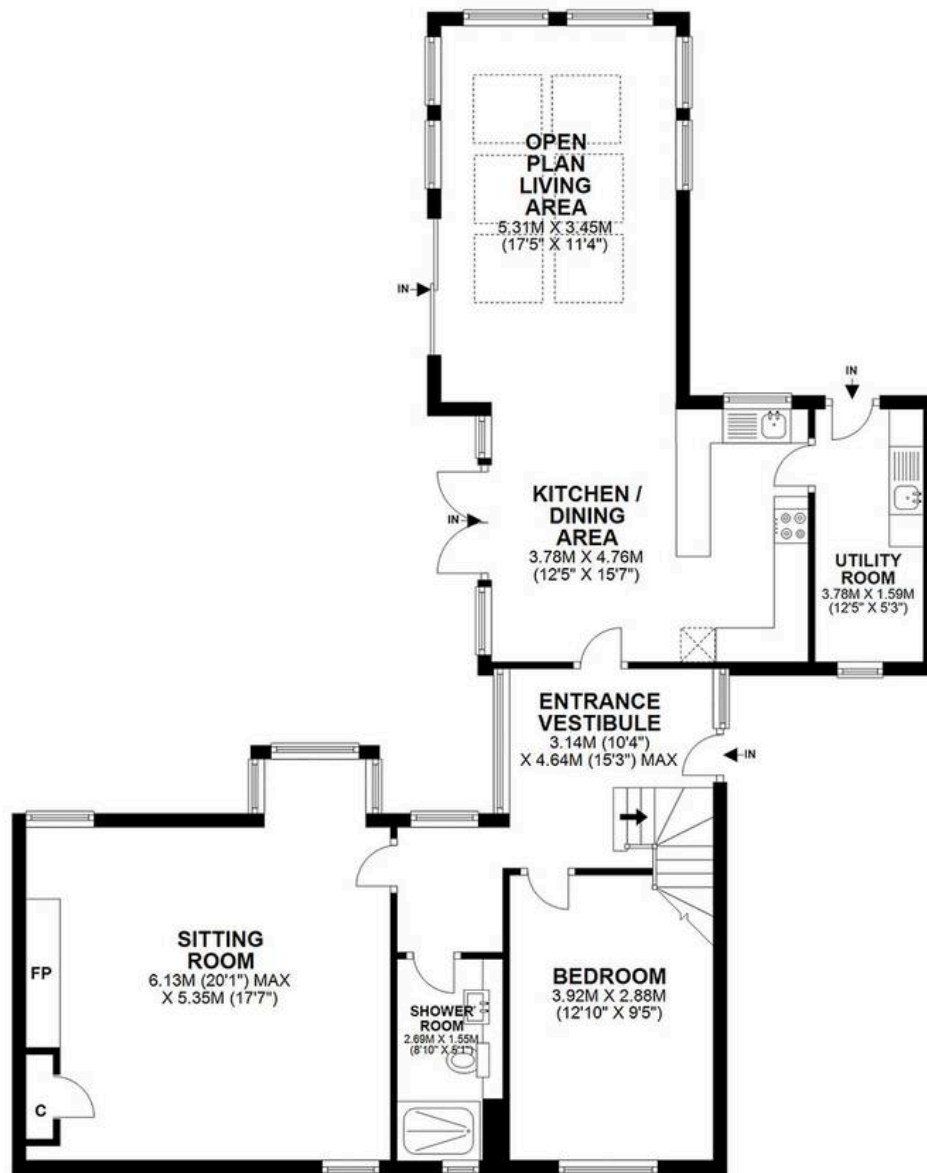
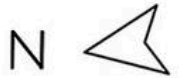
First floor: Landing, principal bedroom, ensuite shower room/wc, bedroom 2, ensuite shower room, bedroom 3, family bathroom/wc.

Outside: Shared access, parking, lawn garden, paved sun terrace, beautiful views.

Council Tax band: G

Tenure: Freehold





GROUND FLOOR



FIRST FLOOR

SOUTH VIEW, 8 ELFORD FARM COTTAGES, SEAHOUSES, NE68 7UT

APPROXIMATE GROSS INTERNAL AREA 177 SQ M 1909 SQ FT - NOT TO SCALE - FOR ILLUSTRATIVE PURPOSES ONLY
All measurements and fixtures including doors and windows are approximate and should be independently verified.





Symonds Taylor

101 St. Georges Terrace, Jesmond – NE2 2DN

0191 338 9999 • hello@symondstaylor.co.uk • www.symondstaylor.co.uk

All descriptions, plans or references to condition are given in good faith only. Whilst every endeavour is made to ensure accuracy, please check with us on any points of especial importance to you.