



*Symonds
Taylor*

2 Albemarle Avenue, Jesmond

Newcastle Upon Tyne

Offers Over £425,000



2 Albemarle Avenue

Jesmond, Newcastle Upon Tyne

This impressive end terrace period family home is located in High West Jesmond close to Ilford Road Metro, the Town Moor and the bustling suburbs of Jesmond and Gosforth, ideally suited for couples and young families alike an internal inspection is essential.

Accommodation comprises:

Ground Floor: Entrance Vestibule, Hallway, Sitting Room, Open Plan Dining Kitchen.

First Floor: Landing, Principal Bedroom, Bedroom 2, Bedroom 3, Family Bathroom.

Outside: Front Town Garden, Rear Courtyard, Self Contained Home Office.

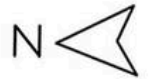
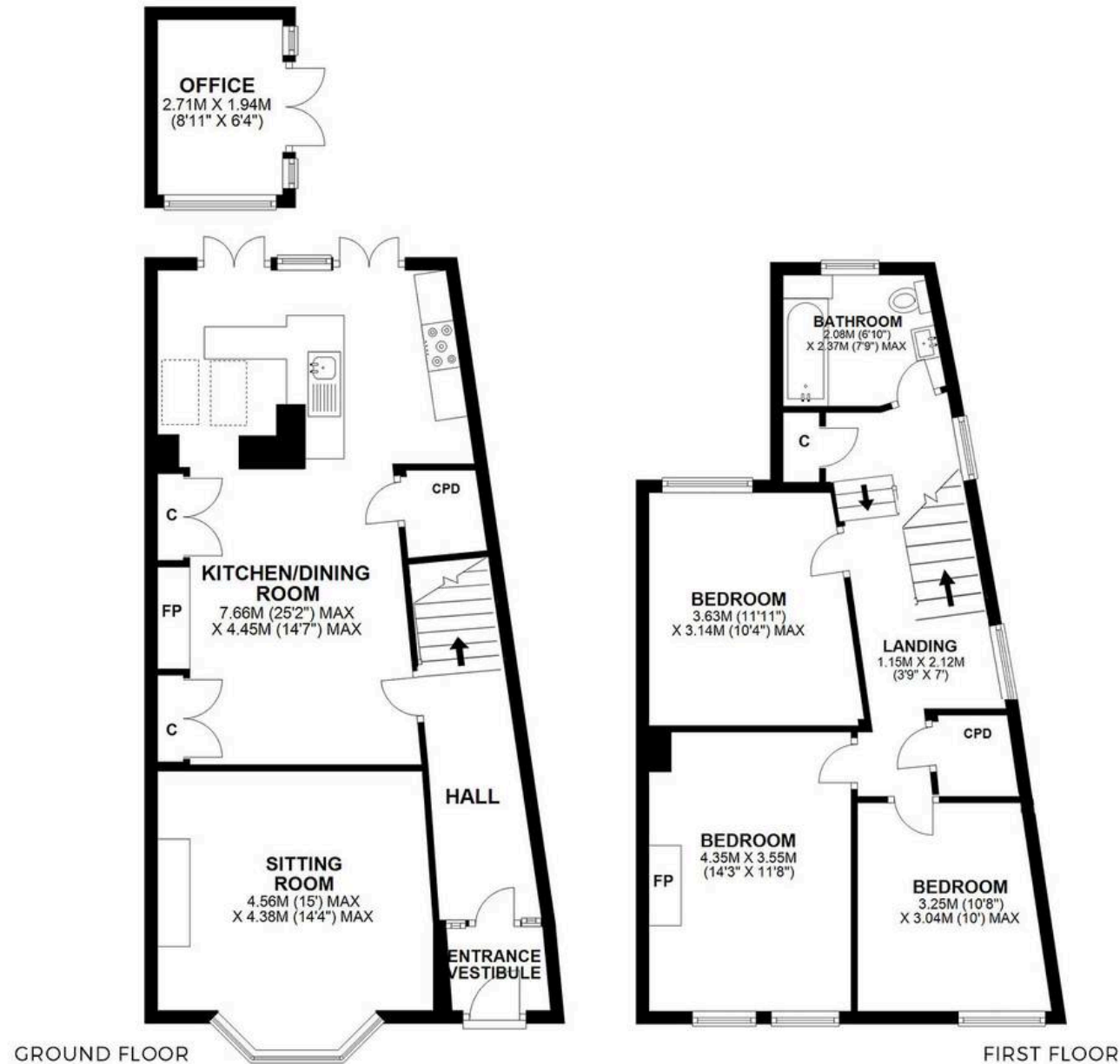
Council Tax band: D

Tenure: Freehold

EPC Energy Efficiency Rating: D

EPC Environmental Impact Rating: E





2 ALBEMARLE AVENUE, JESMOND, NE2 3NQ

APPROXIMATE GROSS INTERNAL AREA 117 SQ M 1259 SQ FT - NOT TO SCALE - FOR ILLUSTRATIVE PURPOSES ONLY
All measurements and fixtures including doors and windows are approximate and should be independently verified.





Symonds Taylor

101 St. Georges Terrace, Jesmond - NE2 2DN

0191 338 9999 • hello@symondstaylor.co.uk • www.symondstaylor.co.uk

All descriptions, plans or references to condition are given in good faith only. Whilst every endeavour is made to ensure accuracy, please check with us on any points of especial importance to you.