

*Symonds
Taylor*

27 Montagu Avenue, Gosforth

Newcastle Upon Tyne

Offers Over **£1,800,000**





27 Montagu Avenue

Gosforth, Newcastle Upon Tyne

This detached "Arts and Crafts" style family home has a wonderful setting on Montagu Avenue with southerly views over their generous gardens out over the Town Moor.

Accommodation comprises:

Ground Floor: Entrance Vestibule, Reception Hallway, Cloakroom/WC, Drawing Room, Sitting Room, Dining room/Study, Open-Plan Dining Kitchen and Garden Room, Utility Room.

First Floor: Gallery Landing, Principal Bedroom, Ensuite Bathroom, Bedroom 2, Home Office, Family Bathroom.

Second Floor: Bedroom 3, Bedroom 4, Bedroom 5/Ensuite.

Outside: Front Garden, Two Driveways, Off-Street Parking, Integral Garage, South Facing Rear Lawn Garden, Town Moor Views.

Council Tax band: G

Tenure: Freehold

EPC Energy Efficiency Rating: D

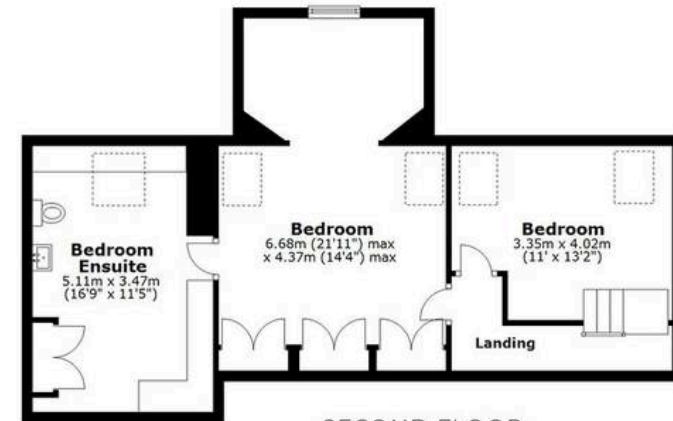




GROUND FLOOR



FIRST FLOOR



SECOND FLOOR

27 MONTAGU AVENUE, GOSFORTH, NE3 4HY

APPROXIMATE GROSS INTERNAL AREA 327 SQ M 3522 SQ FT - NOT TO SCALE - FOR ILLUSTRATIVE PURPOSES ONLY
All measurements and fixtures including doors and windows are approximate and should be independently verified.







Symonds Taylor

101 St. Georges Terrace, Jesmond - NE2 2DN

0191 338 9999 • hello@symondstaylor.co.uk • www.symondstaylor.co.uk

All descriptions, plans or references to condition are given in good faith only. Whilst every endeavour is made to ensure accuracy, please check with us on any points of especial importance to you.