

*Symonds
Taylor*

309 Chillingham Road, Heaton

Newcastle Upon Tyne

Guide Price £385,000



309 Chillingham Road

Heaton, Newcastle Upon Tyne

This substantial two story mid-terrace period property is located in the heart of Heaton and has lovely sized rooms with generous high ceilings and will appeal to a wide range of national and regional buyers, and an internal inspection will be essential.

Accommodation comprises:

Ground Floor: Entrance Vestibule, Hallway, Sitting Room, Dining Room, Breakfasting Kitchen.

First Floor: Landing, Bedroom 1, Bedroom 2, Bedroom 3, Bedroom 4, Family Bathroom, Separate WC.

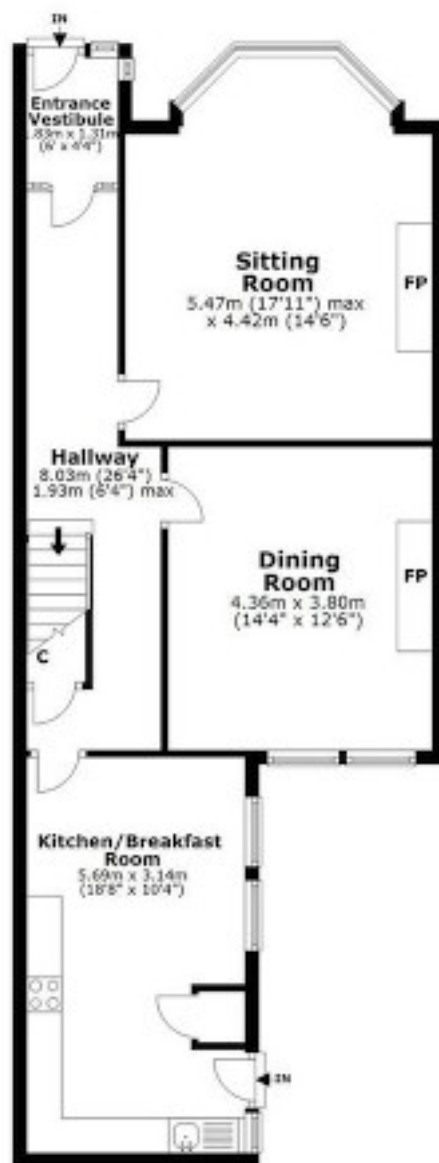
Outside: Front Town Garden, Rear Courtyard, Off Street Parking.

EPC:

Council Tax band: B

Tenure: Freehold





GROUND FLOOR



FIRST FLOOR



309 CHILLINGHAM ROAD, HEATON, NE6 5SB

APPROXIMATE GROSS INTERNAL AREA 146 SQ M 1572 SQ FT - NOT TO SCALE - FOR ILLUSTRATIVE PURPOSES ONLY
All measurements and fixtures including doors and windows are approximate and should be independently verified.



*Symonds
Taylor*



Symonds Taylor

101 St. Georges Terrace, Jesmond – NE2 2DN

0191 338 9999 • hello@symondstaylor.co.uk • www.symondstaylor.co.uk

All descriptions, plans or references to condition are given in good faith only.

Whilst every endeavour is made to ensure accuracy, please check with us on any points of especial importance to you.