

A photograph of a residential property. In the foreground, there is a large garden with various flowers, including pink and orange cosmos. A stone wall runs across the middle ground, with a sign that reads "The Limes 29". Behind the wall, there is a large house with a brown roof and white walls. The sky is blue with some clouds, and the sun is visible in the upper center.

*Symonds  
Taylor*

**29 The Limes, Rock**

Northumberland

Guide Price **£550,000**







## 29 The Limes

Rock, Northumberland

This deceptively spacious & versatile five bedroom, detached, family home sits within its own grounds on the edge of the pretty village of Rock, close to the market town Alnwick in the heart of Northumberland and will have to be viewed to be appreciated.

### **Accommodation comprises:**

**Ground Floor:** Entrance Vestibule, Hallway, Sitting Room, Conservatory, Breakfasting Kitchen, Utility Area, Rear Hall, Cloakroom/WC, Inner Hallway, Bedroom 5/Snug, Dining Room, Home Office, Shower Room/WC.

**First Floor:** Landing, Principal Bedroom, Walk-in Wardrobe, Ensuite Shower Room, Bedroom 2, Bedroom 3, Bedroom 4, Family Bathroom.

**Outside:** Block Paved Driveway, Ample Parking, Store, Mature Garden, Lawns, Beds, Rear Lawn Garden, Vegetable Garden.

Council Tax band: E

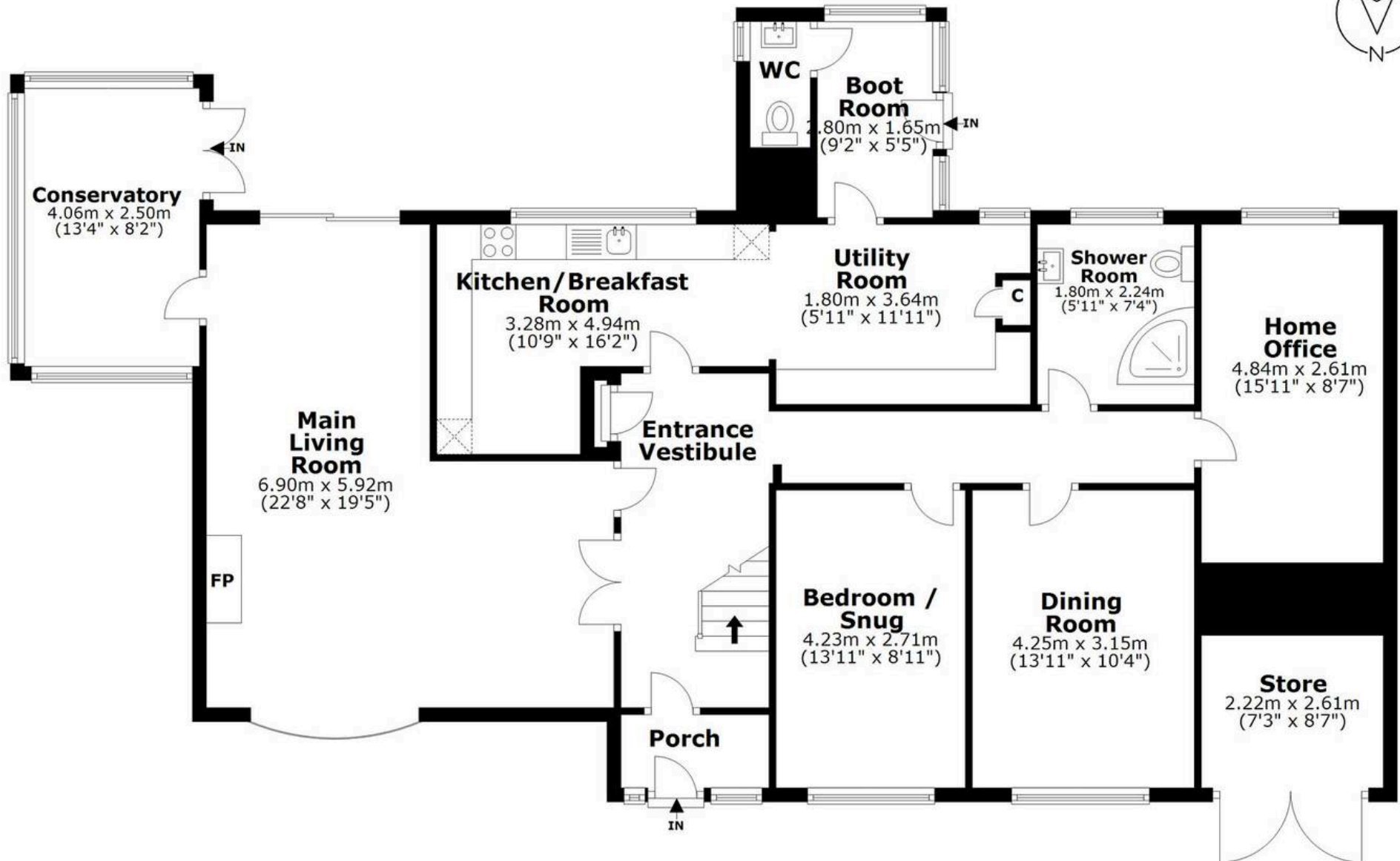
Tenure: Leasehold

EPC Energy Efficiency Rating: E

EPC Environmental Impact Rating: D

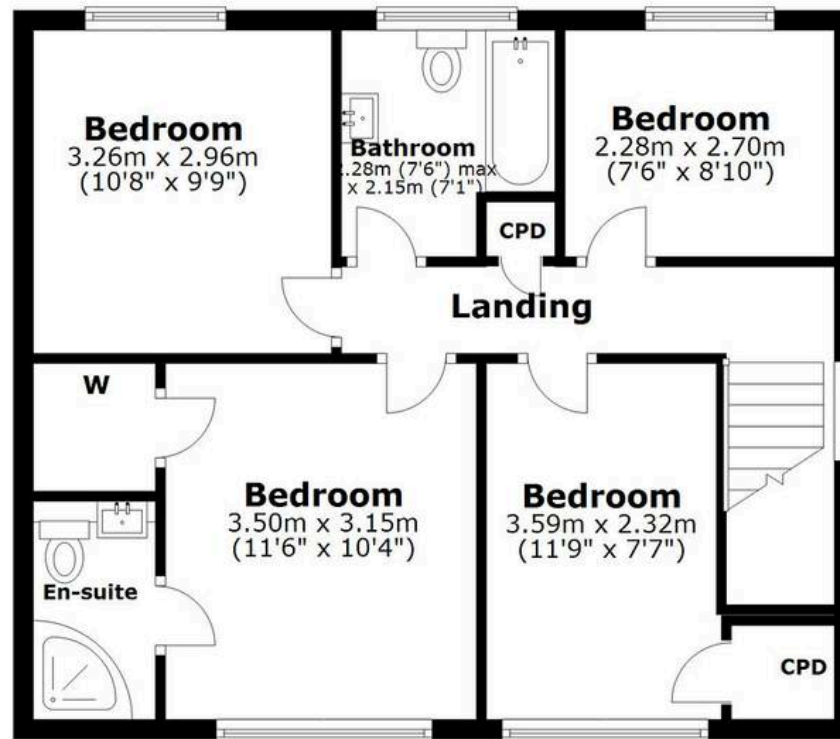






**THE LIMES, 29 ROCK VILLAGE, NE66 3SD**  
NOT TO SCALE - FOR ILLUSTRATIVE PURPOSES ONLY  
APPROXIMATE GROSS INTERNAL AREA 2143 SQ FT / 199 SQ M  
All measurements and fixtures including doors and windows  
are approximate and should be independently verified.  
Copyright © BASH 2024  
[www.wearebash.co.uk](http://www.wearebash.co.uk)

GROUND FLOOR



FIRST FLOOR

**THE LIMES, 29 ROCK VILLAGE, NE66 3SD**  
NOT TO SCALE - FOR ILLUSTRATIVE PURPOSES ONLY  
APPROXIMATE GROSS INTERNAL AREA 2143 SQ FT / 199 SQ M  
All measurements and fixtures including doors and windows  
are approximate and should be independently verified.  
Copyright © BASH 2024  
[www.wearebash.co.uk](http://www.wearebash.co.uk)









## Symonds Taylor

101 St. Georges Terrace, Jesmond – NE2 2DN

0191 338 9999 • [hello@symondstaylor.co.uk](mailto:hello@symondstaylor.co.uk) • [www.symondstaylor.co.uk](http://www.symondstaylor.co.uk)

All descriptions, plans or references to condition are given in good faith only. Whilst every endeavour is made to ensure accuracy, please check with us on any points of especial importance to you.