

*Symonds
Taylor*

3 Woodland Mews Reid Park Road, Newcastle Upon Tyne

Newcastle Upon Tyne

Guide Price £90,000



3 Woodland Mews Reid Park Road

Newcastle Upon Tyne, Newcastle Upon Tyne

This one bedroom ground floor apartment forms part of this purpose built block in the heart of Jesmond, which is designed for the over 60s and offers an element of assisted living, whilst also allowing for access to all that this bustling suburb has to offer.

Accommodation comprises:

Ground Floor: Communal Hallway, Hallway, Sitting Room/Dining Room, Kitchen, Double Bedroom, Shower Room/WC.

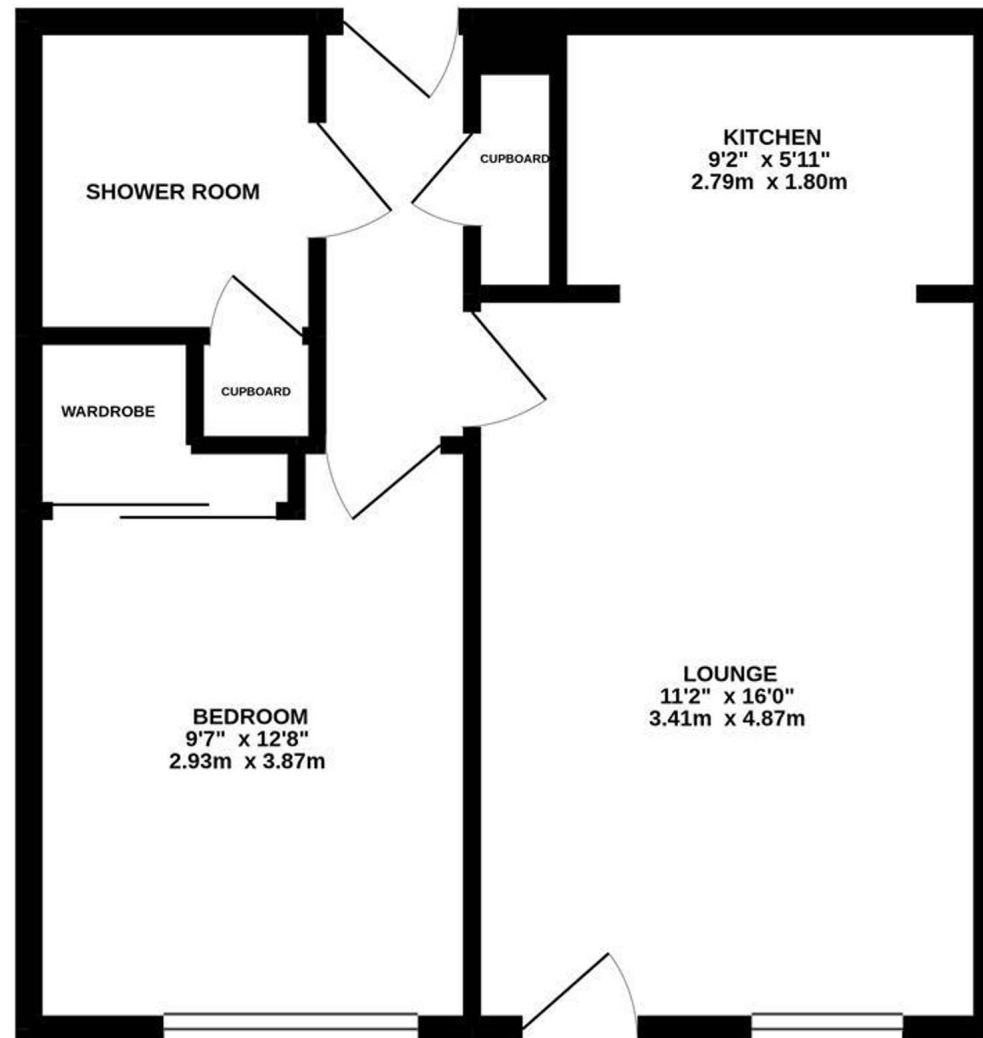
Outside: Residents' Parking, Communal Grounds, South Facing Paved Patio.

Council Tax band: A

Tenure: Leasehold



GROUND FLOOR
453 sq.ft. (42.1 sq.m.) approx.



TOTAL FLOOR AREA : 453 sq.ft. (42.1 sq.m.) approx.

Whilst every attempt has been made to ensure the accuracy of the floorplan contained here, measurements of doors, windows, rooms and any other items are approximate and no responsibility is taken for any error, omission or mis-statement. This plan is for illustrative purposes only and should be used as such by any prospective purchaser. The services, systems and appliances shown have not been tested and no guarantee as to their operability or efficiency can be given.
Made with Metropix ©2020





Symonds Taylor

101 St. Georges Terrace, Jesmond – NE2 2DN

0191 338 9999 • hello@symondstaylor.co.uk • www.symondstaylor.co.uk

All descriptions, plans or references to condition are given in good faith only. Whilst every endeavour is made to ensure accuracy, please check with us on any points of especial importance to you.