

*Symonds
Taylor*



13 Little Dene, Jesmond

Newcastle Upon Tyne

Guide Price **£480,000**



13 Little Dene

Jesmond, Newcastle Upon Tyne

This spacious purpose built first floor apartment, with no onward chain is located in this exclusive address in a highly sought after part of the city, with large west facing balcony, a great deal of natural light and excellent versatility that will appeal to a wide range of regional and national buyers.

Accommodation comprises:

Ground Floor: Communal Hallway.

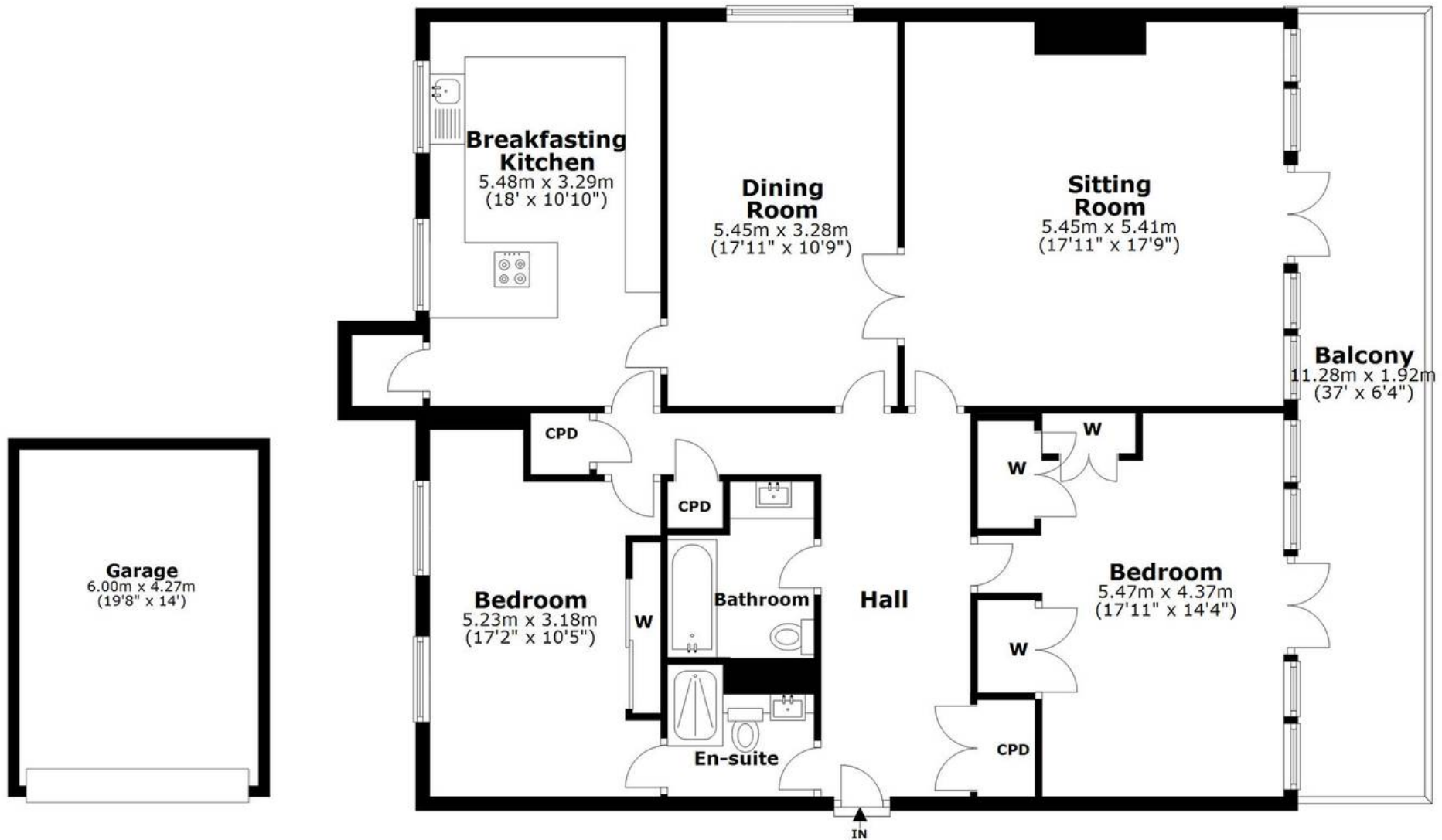
First Floor: Communal Landing, Reception Hallway, Sitting Room, Dining Room, Breakfasting Kitchen, Principal Bedroom, Bedroom 2, Ensuite Shower Room, Family Bathroom.

Outside: Communal Grounds, Residents' Parking, Integral Garage, West Facing Balcony.

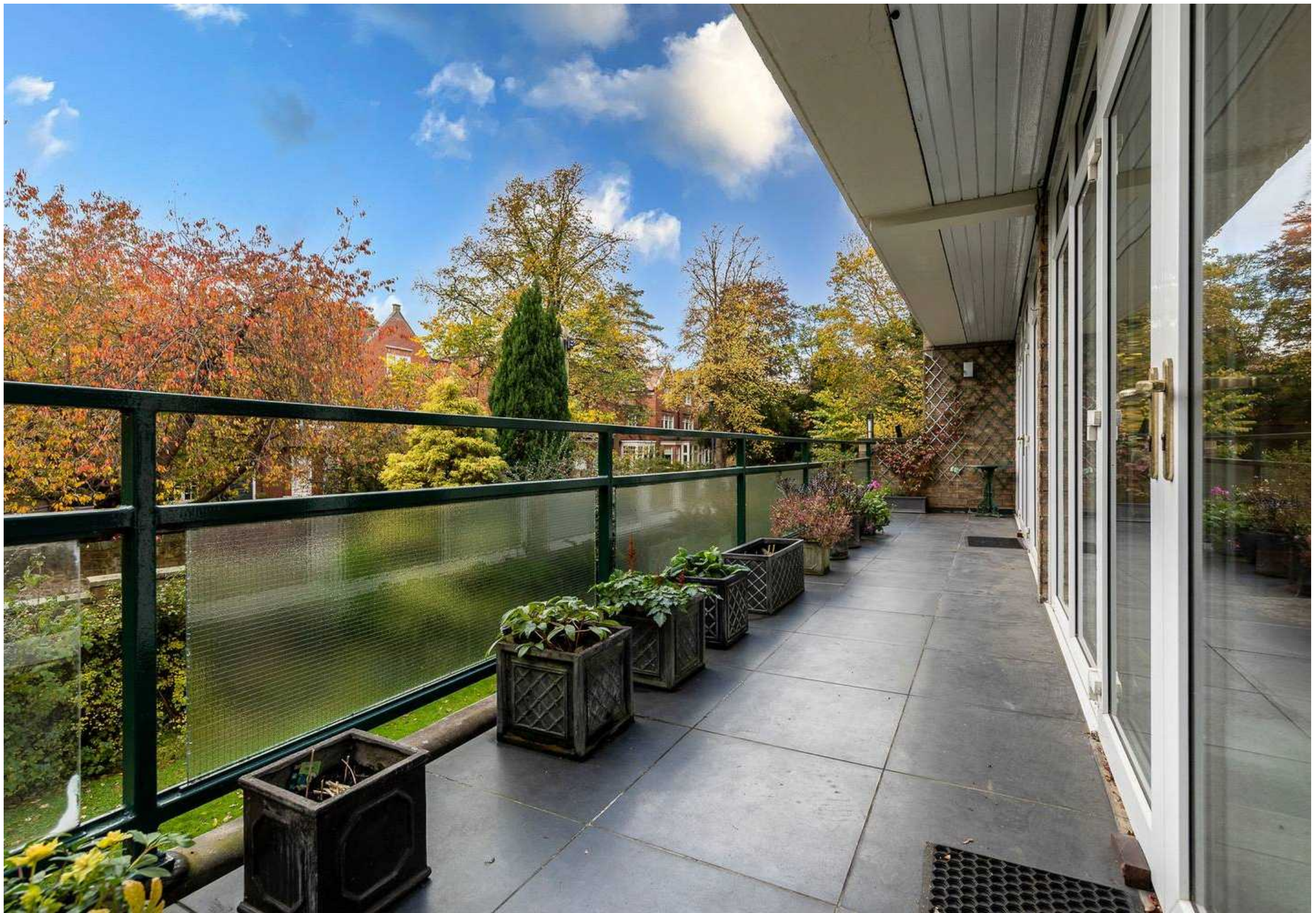
Council Tax band: F

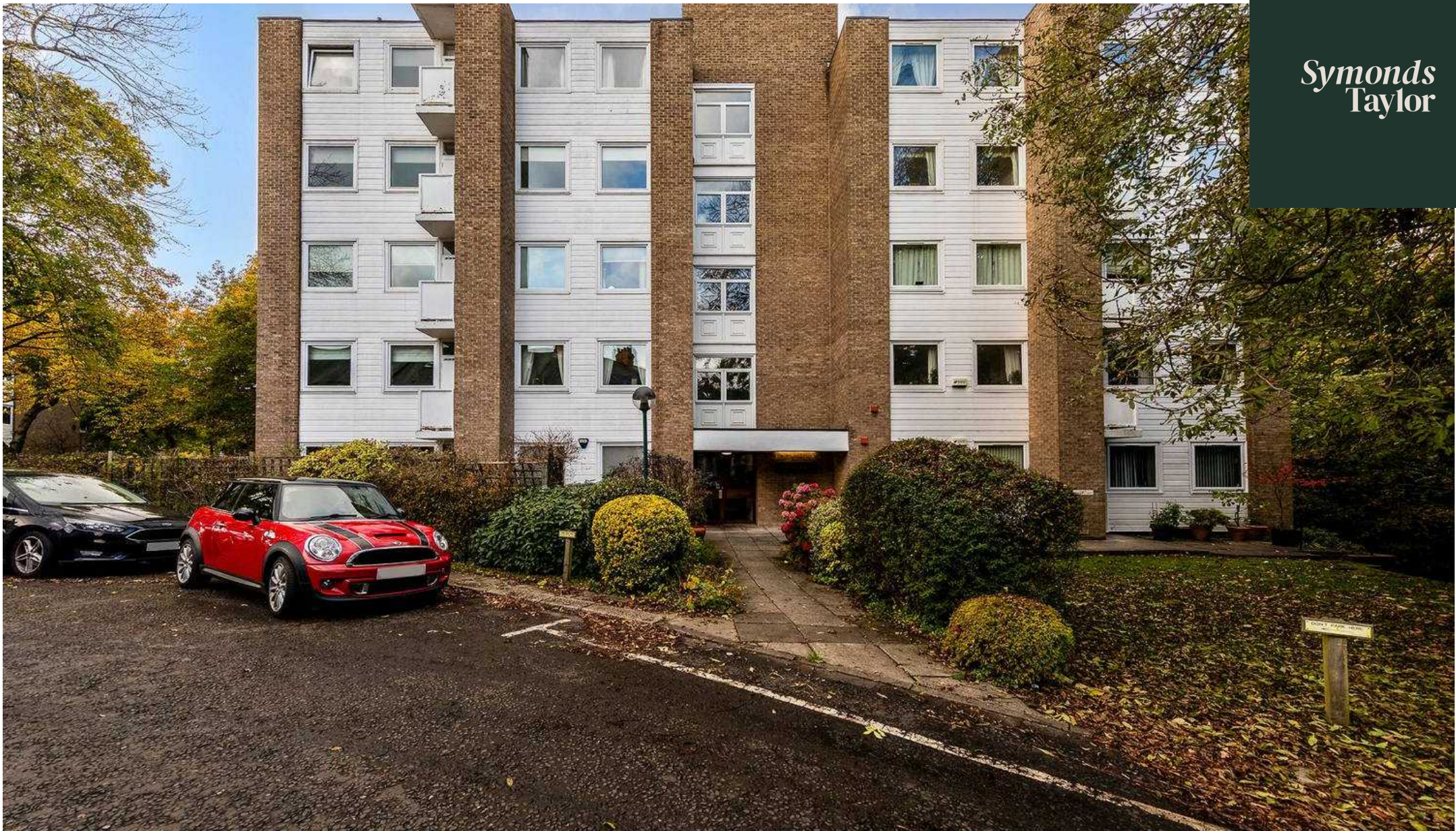
Tenure: Leasehold





13 LITTLE DENE, GOSFORTH, NE2 3NZ
 NOT TO SCALE - FOR ILLUSTRATIVE PURPOSES ONLY
 APPROXIMATE GROSS INTERNAL AREA 1451 SQ FT / 135 SQ M
 All measurements and fixtures including doors and windows
 are approximate and should be independently verified.
 Copyright © BASH
www.wearebash.co.uk





Symonds Taylor

101 St. Georges Terrace, Jesmond - NE2 2DN

0191 338 9999 • hello@symondstaylor.co.uk • www.symondstaylor.co.uk

All descriptions, plans or references to condition are given in good faith only. Whilst every endeavour is made to ensure accuracy, please check with us on any points of especial importance to you.