

*Symonds
Taylor*



Hodgkin Hall, Barmoor Lane End, Lowick

Berwick upon Tweed

Guide Price **£395,000**



Hodgkin Hall, Barmoor Lane End

Lowick, Berwick upon Tweed

This deceptively spacious and impressive two storey period property, has been a successful holiday let in recent years, sleeping up to eight, and was originally a Brethren Chapel reading room and has been imaginatively converted to retain many original features, whilst creating what is required for modern living. All located just outside the pretty village of Lowick in the heart of north Northumberland close to its beautiful coastline.

Ground Floor: Entrance Lobby, Hallway, Principal Bedroom, Ensuite Shower Room, Bedroom, 2, Bedroom 3, Bedroom 4, Family Bathroom, Utility Room.

First Floor: Landing, Bedroom 4, Bedroom 5, Open Plan Living Space with Sitting, Dining and Kitchen Areas.

Outside: Gravelled Parking, Lawned Garden.

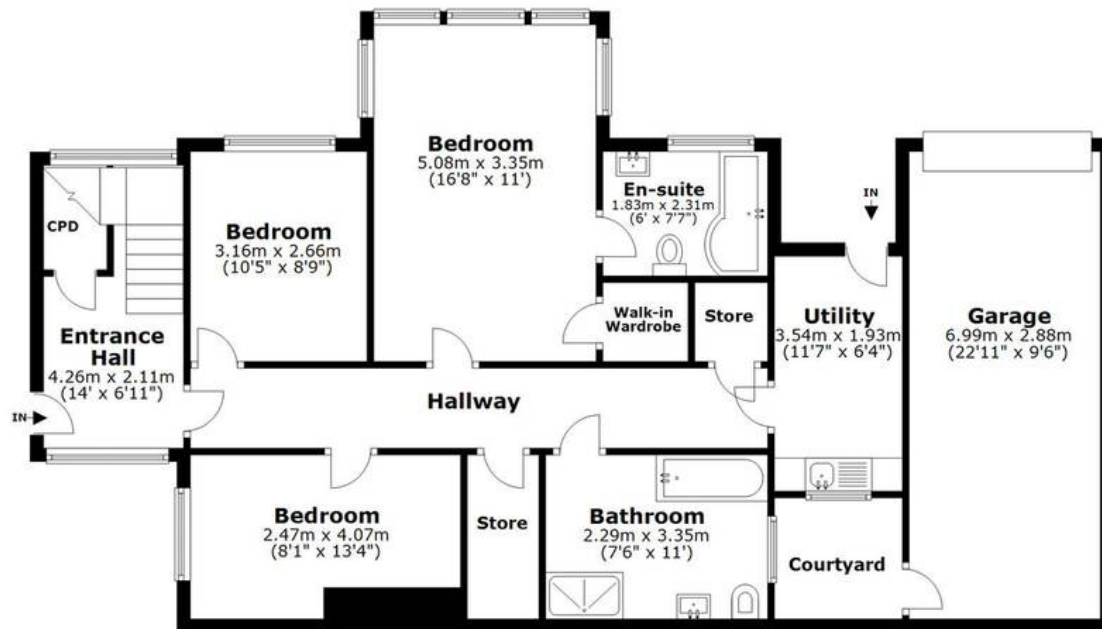
The Victorian Hodgkin Hall originally a Brethren Chapel reading room, has been imaginatively converted to retain its original features of open beams and large windows, whilst being sensitively updated for modern living. Having been a successful holiday let for sleeping up to eight for many years, the property will have to be viewed to be appreciated.

Council Tax band: TBD

Tenure: Freehold

EPC Energy Efficiency Rating: F





GROUND FLOOR



FIRST FLOOR

HODGKIN HALL, LOWICK, TD15 2TR
NOT TO SCALE - FOR ILLUSTRATIVE PURPOSES ONLY
APPROXIMATE GROSS INTERNAL AREA 1927 SQ FT / 178 SQ M
All measurements and fixtures including doors and windows
are approximate and should be independently verified.

Copyright © BASH
www.wearebash.co.uk





Symonds Taylor

101 St. Georges Terrace, Jesmond - NE2 2DN

0191 338 9999 • hello@symondstaylor.co.uk • www.symondstaylor.co.uk

All descriptions, plans or references to condition are given in good faith only. Whilst every endeavour is made to ensure accuracy, please check with us on any points of especial importance to you.