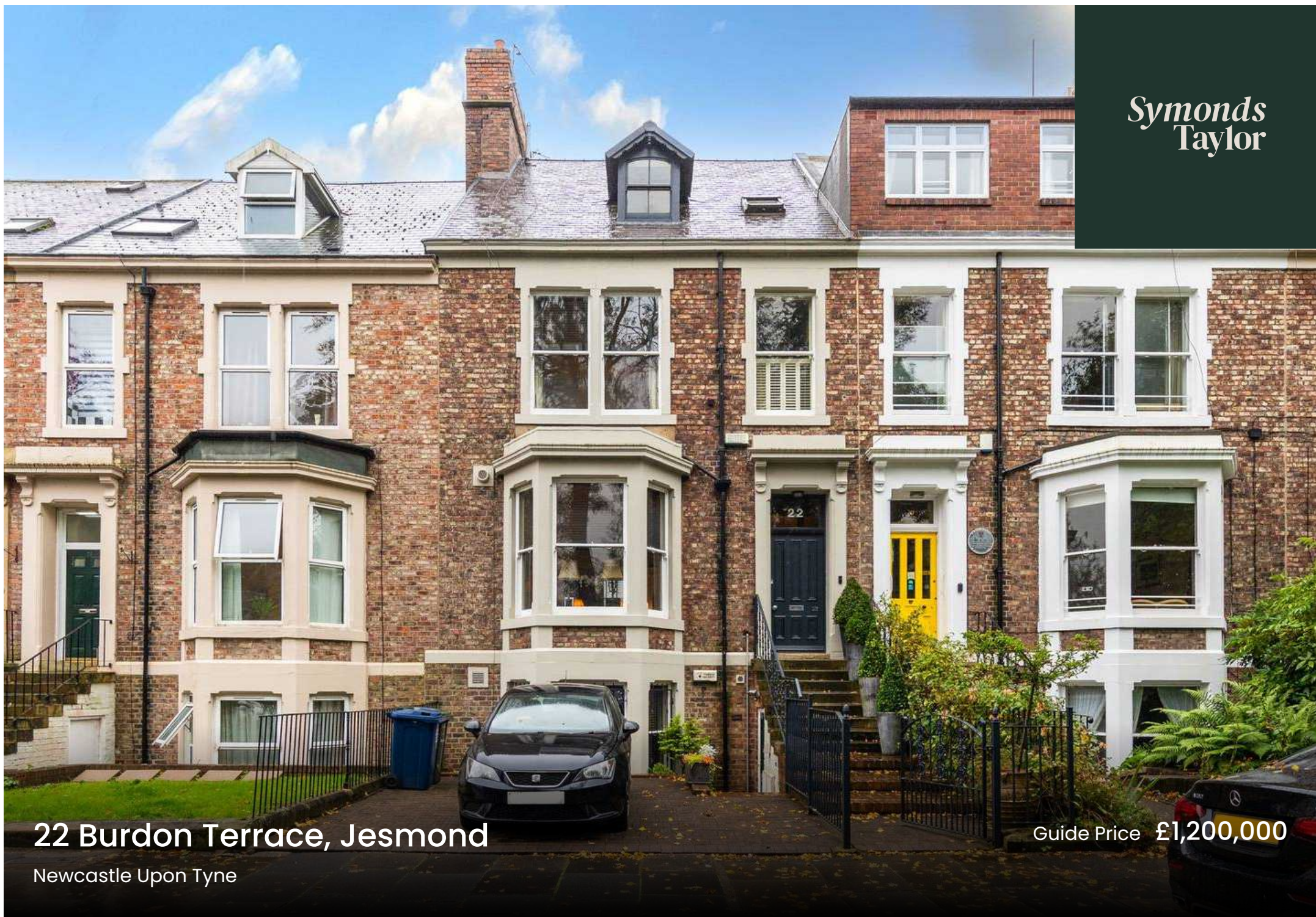


*Symonds
Taylor*

22 Burdon Terrace, Jesmond

Newcastle Upon Tyne

Guide Price **£1,200,000**







22 Burdon Terrace

Jesmond, Newcastle Upon Tyne

This beautiful, vast, and contemporary Victorian townhouse is perfectly situated on the desirable street of Burdon Terrace, within the heart of Brandling Village Conservation Area, Jesmond. Burdon Terrace is within walking distance to Clayton Road, Acorn Road, Osborne Road, Exhibition Park and Newcastle City Centre. This stylish home would be ideally suited to a family with highly regarded independent schools located within walking distance.

Burdon Terrace retains many original features and boasts over 3,000 Sq ft of internal living space and briefly comprises of: Entrance hall, sitting room, lounge, kitchen, sunroom, utility, family bathroom, principal bedroom with walk in wardrobe, second bedroom, bathroom, third bedroom, fourth bedroom and fifth bedroom.

Additionally, 22 Burdon Terrace includes a well presented basement apartment comprising of; two double bedrooms, one of which has an ensuite. Council Tax band: F

Tenure: Freehold

EPC Energy Efficiency Rating: E

EPC Environmental Impact Rating: F





BASEMENT

GROUND FLOOR

FIRST FLOOR

SECOND FLOOR

22 BURDON TERRACE, JESMOND, NE2 3AE

NOT TO SCALE - FOR ILLUSTRATIVE PURPOSES ONLY

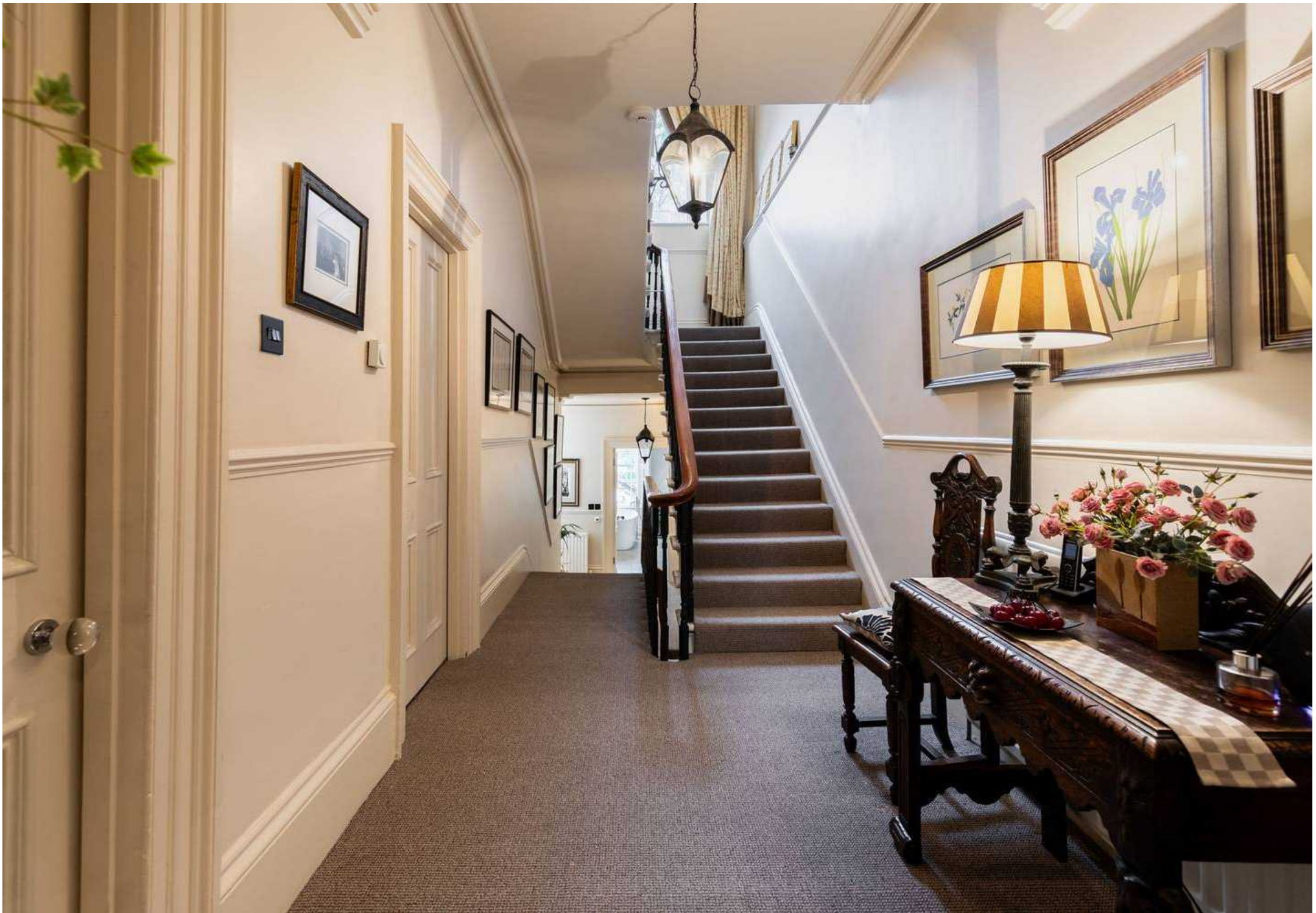
APPROXIMATE GROSS INTERNAL AREA 3032 SQ FT / 282 SQ M

All measurements and fixtures including doors and windows are approximate and should be independently verified.

copyright © BASH

www.wearebash.co.uk







Symonds Taylor

101 St. Georges Terrace, Jesmond - NE2 2DN

0191 338 9999 • hello@symondstaylor.co.uk • www.symondstaylor.co.uk

All descriptions, plans or references to condition are given in good faith only. Whilst every endeavour is made to ensure accuracy, please check with us on any points of especial importance to you.