

*Symonds  
Taylor*

20 Etal Avenue, Whitley Bay

Whitley Bay

Offers Over £380,000



## 20 Etal Avenue

Whitley Bay, Whitley Bay

This semi-detached family home is located in the sought after location close to Whitley Bay town centre with gardens front and rear with a single garage which we know will appeal to a wide range of regional and national buyers. The current owners have obtained Planning Permission for a 2 storey side extension (Further details are available).

**Ground Floor:** Ground floor: reception hallway, cloakroom/WC, sitting room, dining room, kitchen.

**First Floor:** First floor: landing, bedroom 1, bedroom 2, bedroom 3, family bathroom.

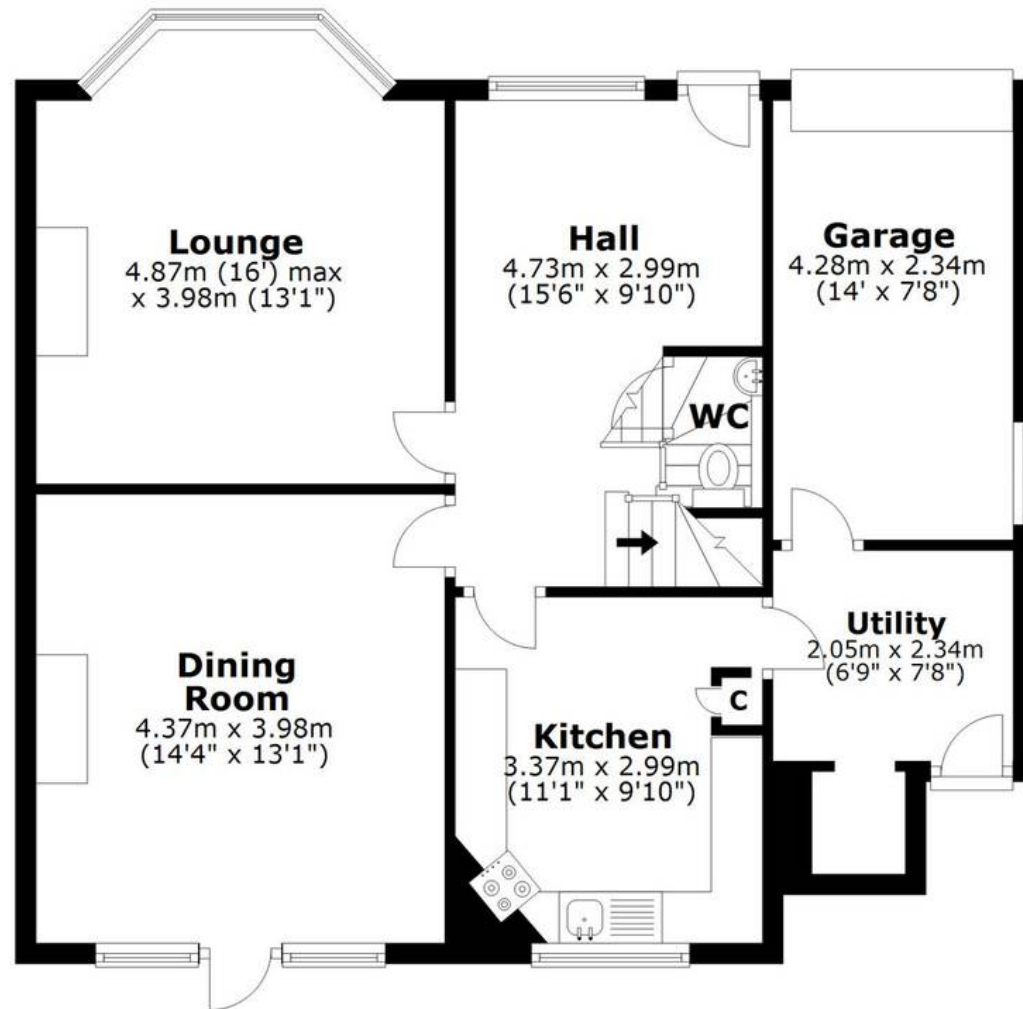
**Outside:** Driveway, off street parking, single garage, rear lawn garden



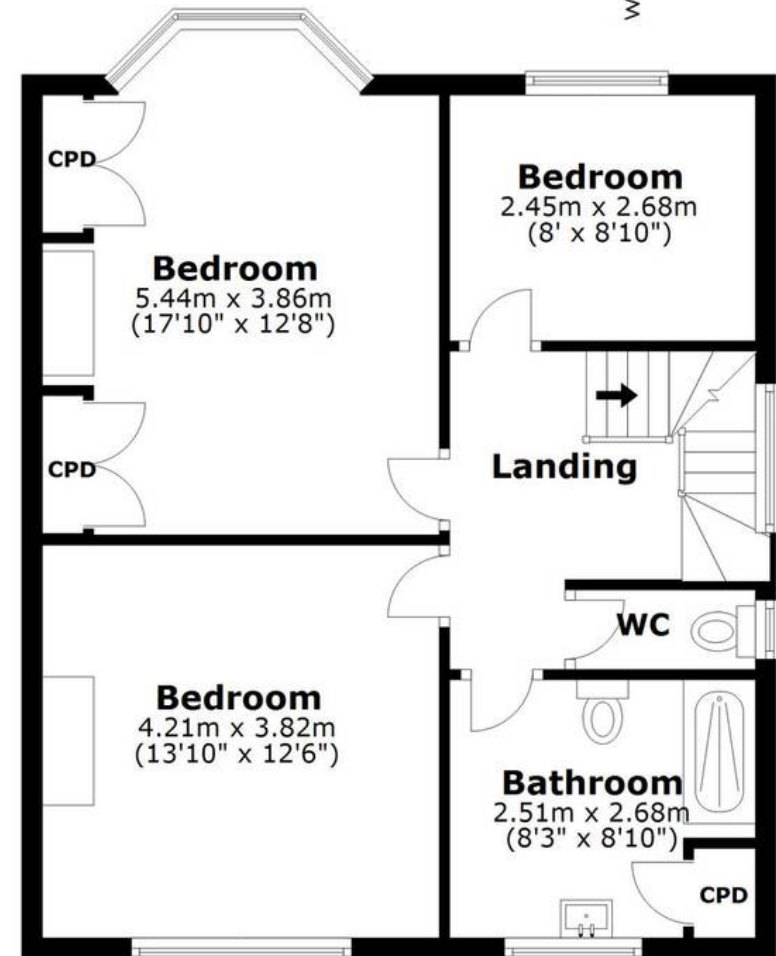
Etal Avenue is a popular residential street that is located close to Whitley Bay town centre. This popular seaside town offers a wealth of local and national shops, restaurants, public houses, coffee shops and post office. It has a choice of schooling for all ages as well as access to a number of private schools that can be found in Newcastle. Whitley Bay is a wonderful lifestyle location with its own beaches.

Freehold

Council Tax band: D



GROUND FLOOR



FIRST FLOOR



**20 ETAL AVENUE, WHITLEY BAY, NE25 8QF**

NOT TO SCALE - FOR ILLUSTRATIVE PURPOSES ONLY  
 APPROXIMATE GROSS INTERNAL AREA 1432 SQ FT / 133 SQ M  
 All measurements and fixtures including doors and windows  
 are approximate and should be independently verified.

Copyright © BASH  
[www.wearebash.co.uk](http://www.wearebash.co.uk)



## **Symonds Taylor**

101 St. Georges Terrace, Jesmond - NE2 2DN

0191 338 9999 • [hello@symondstaylor.co.uk](mailto:hello@symondstaylor.co.uk) • [www.symondstaylor.co.uk](http://www.symondstaylor.co.uk)

All descriptions, plans or references to condition are given in good faith only.

Whilst every endeavour is made to ensure accuracy, please check with us on any points of especial importance to you.