

*Symonds
Taylor*

35 Simonside Terrace, Heaton

Newcastle Upon Tyne

Offers Over **£350,000**



35 Simonside Terrace

Heaton, Newcastle Upon Tyne

This impressive two storey, mid-terrace period family home, with generous room sizes, is located in the heart of the bustling suburb of Heaton close to Chillingham Road and will appeal to a wide range of regional and national buyers, and an internal inspection will be essential.

Accommodation comprises:

Ground Floor: Ground Floor: Entrance Vestibule, Hallway, Sitting Room Dining Room, Breakfasting Kitchen.

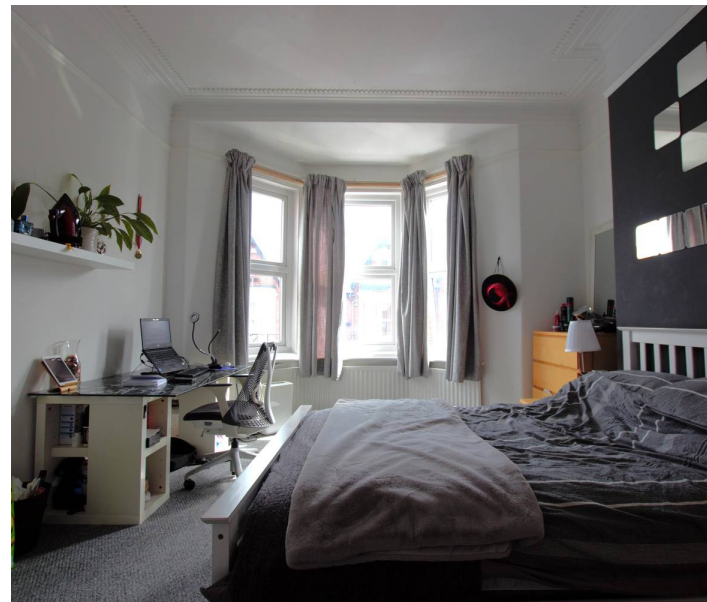
First Floor: Landing, Bedroom 1, Bedroom 2, Bedroom 3, Bedroom 4, Shower Room/WC, Separate WC.

Outside: Front Town Garden, Rear Courtyard.

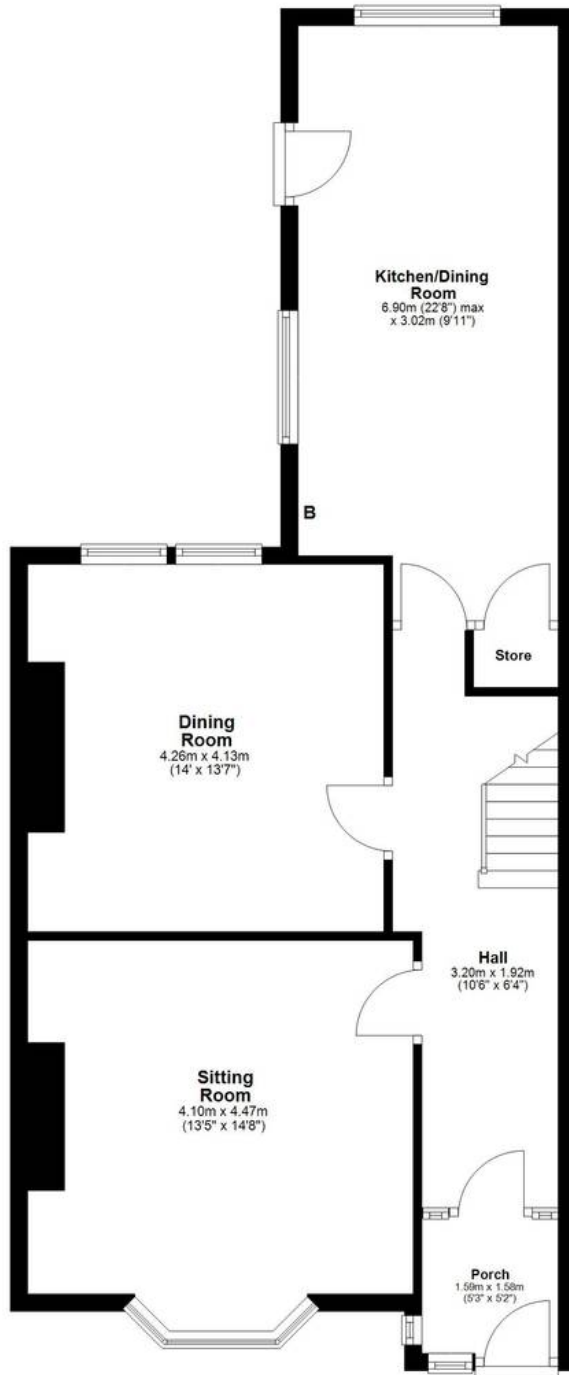
35 Simonside Terrace is an impressive two storey, mid-terrace period family home, with lovely generous rooms with high ceilings, offering a great deal of versatility that will have to be viewed to be appreciated.

Council Tax band: C

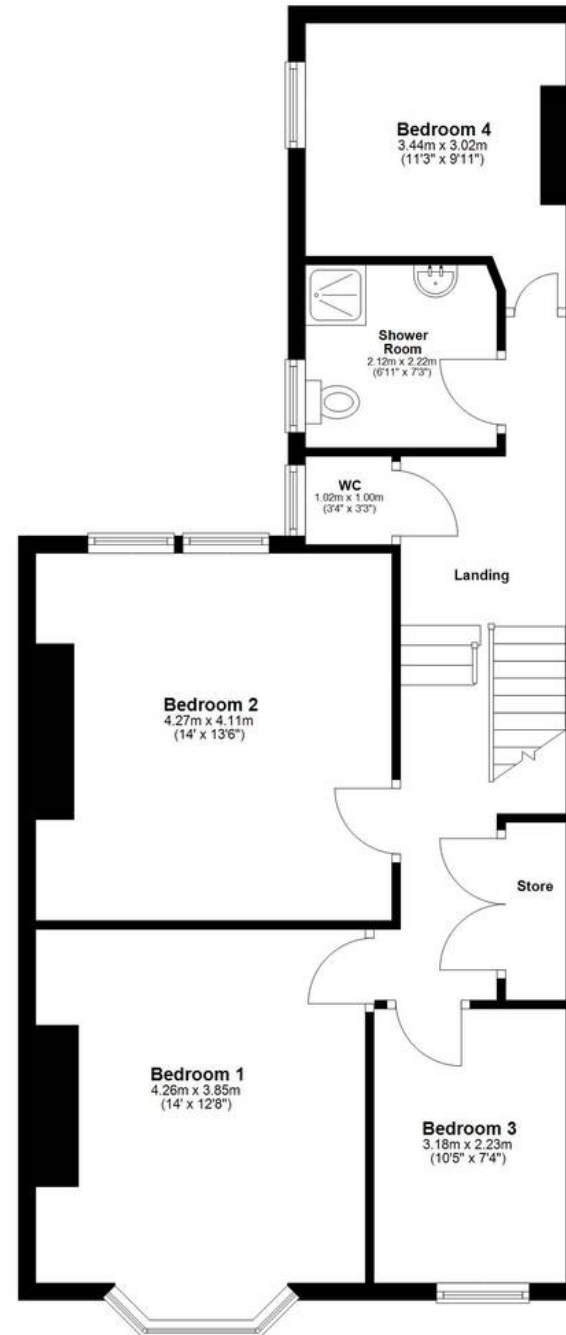
Tenure: Freehold



Ground Floor



First Floor





Symonds Taylor

101 St. Georges Terrace, Jesmond - NE2 2DN

0191 338 9999 • hello@symondstaylor.co.uk • www.symondstaylor.co.uk

All descriptions, plans or references to condition are given in good faith only. Whilst every endeavour is made to ensure accuracy, please check with us on any points of especial importance to you.