

*Symonds  
Taylor*

28 Graham Park Road, Gosforth

Newcastle Upon Tyne

Offers Over £1,350,000





## 28 Graham Park Road

Gosforth, Newcastle Upon Tyne

28 Graham Park Road is one of Newcastle's grandest semi-detached homes and has been owned by the current family for over 45 years as a much-loved family home. With boundless versatility, 28 Graham Park Road is ideal for regional and national buyers being located on one of the city's most sought after streets in central Gosforth.

Accommodation comprises:

Ground Floor: Entrance vestibule, reception hallway, sitting room, dining room, family room, kitchen/breakfast room, shower room/WC.

First Floor: Landing, principal bedroom, bedroom 2, bedroom 3, bedroom 4, family bathroom.

Second Floor: Landing, bedroom 5, bedroom 6, bedroom 7, bedroom 8, bathroom.

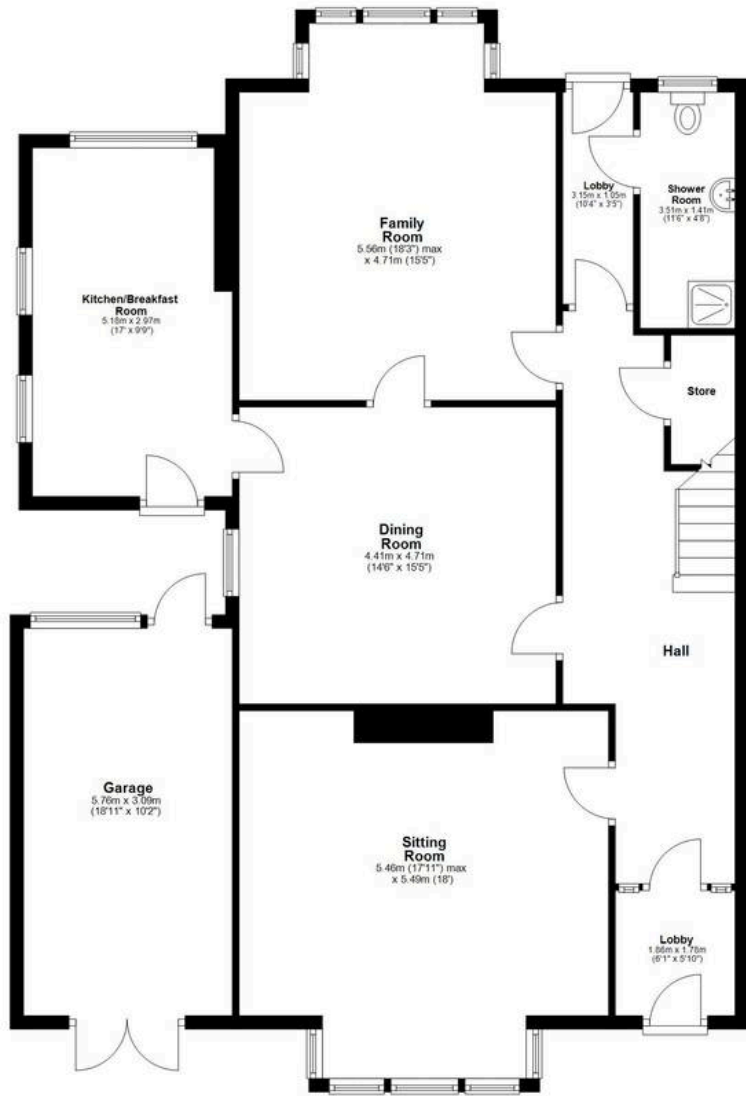
Outside: Front town garden, driveway, on street parking, garage, rear landscaped lawned garden.

Council Tax band: G

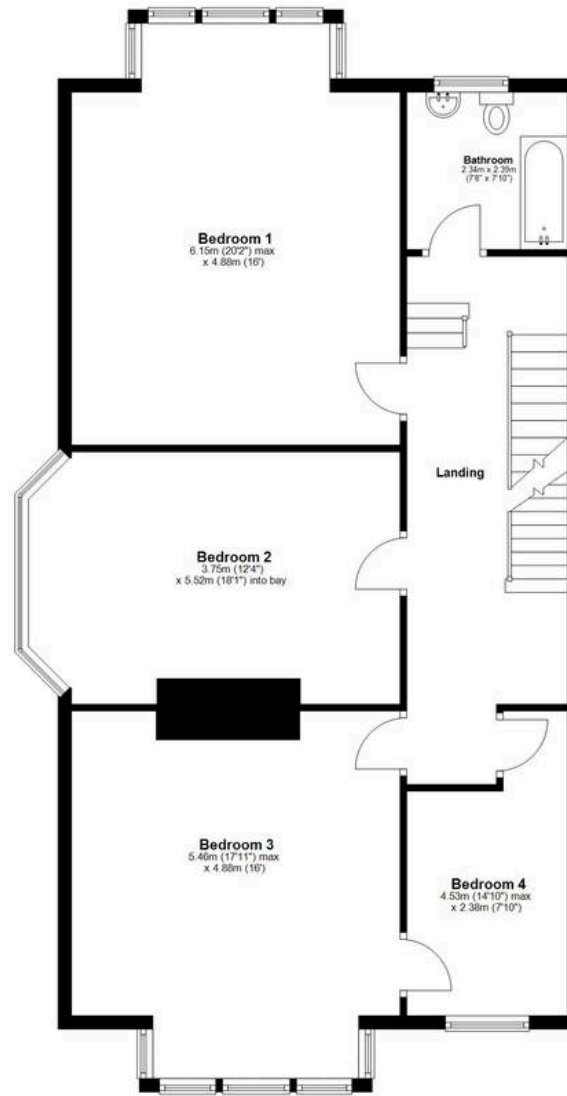
Tenure: Freehold



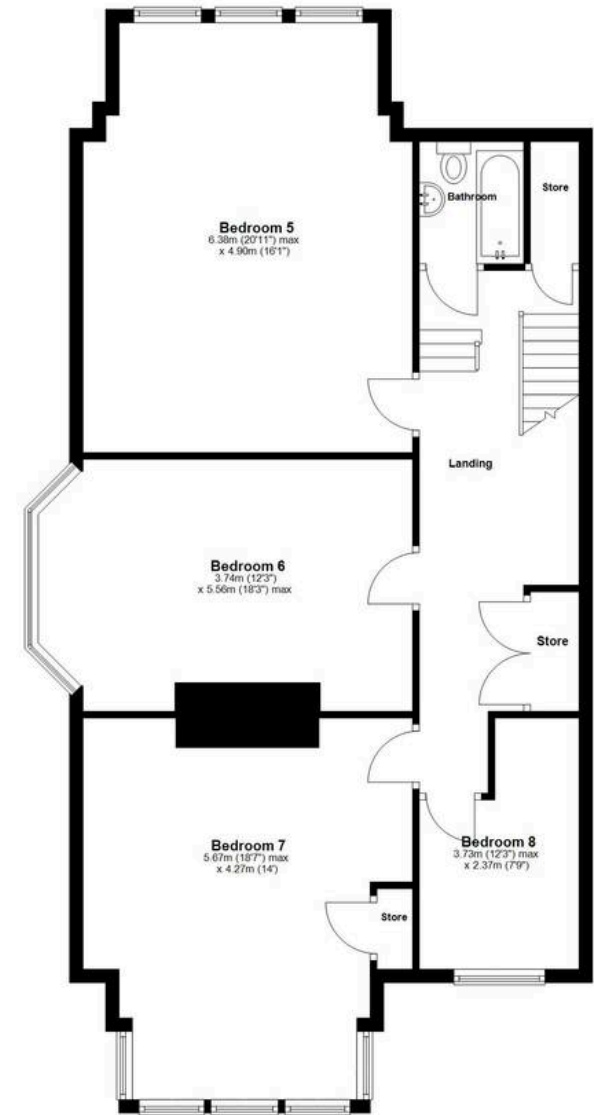
### Ground Floor



### First Floor



### Second Floor



Total area: approx. 352.9 sq. metres (3798.3 sq. feet)



*Symonds  
Taylor*



**Symonds Taylor**

101 St. Georges Terrace, Jesmond - NE2 2DN

0191 338 9999 • [hello@symondstaylor.co.uk](mailto:hello@symondstaylor.co.uk) • [www.symondstaylor.co.uk](http://www.symondstaylor.co.uk)

All descriptions, plans or references to condition are given in good faith only. Whilst every endeavour is made to ensure accuracy, please check with us on any points of especial importance to you.