

*Symonds
Taylor*

69 Grove Park Oval, Gosforth

Newcastle Upon Tyne

Offers Over **£175,000**



69 Grove Park Oval

Gosforth, Newcastle Upon Tyne

This purpose built, second floor apartment forms part of this highly sought after residential development, that is located on The Grove just off Gosforth High Street. With a south facing balcony, open plan living, generous double bedroom, this property is ideally suited for first time buyers, investors, or even those looking for a bolthole.

Accommodation comprises:

Ground Floor: Communal Hallway, Stairs and Lift Access.

Second Floor: Communal Landing, Hallway, Open Plan Living Room/Dining Kitchen, Double Bedroom, Bathroom/WC.

Outside: South Facing Balcony, Communal Grounds, Secure Covered Allocated Parking.

69 Grove Park Oval is a purpose built, second floor apartment with electric heating and double glazing, it has an open plan feel and generous double bedroom and a south facing balcony, which is ideally suited for those looking for a bolthole or for first time buyers. There is an entry-phone system that allows access to the communal hallway. From there are stairs and lift access up to the second floor and communal landing.

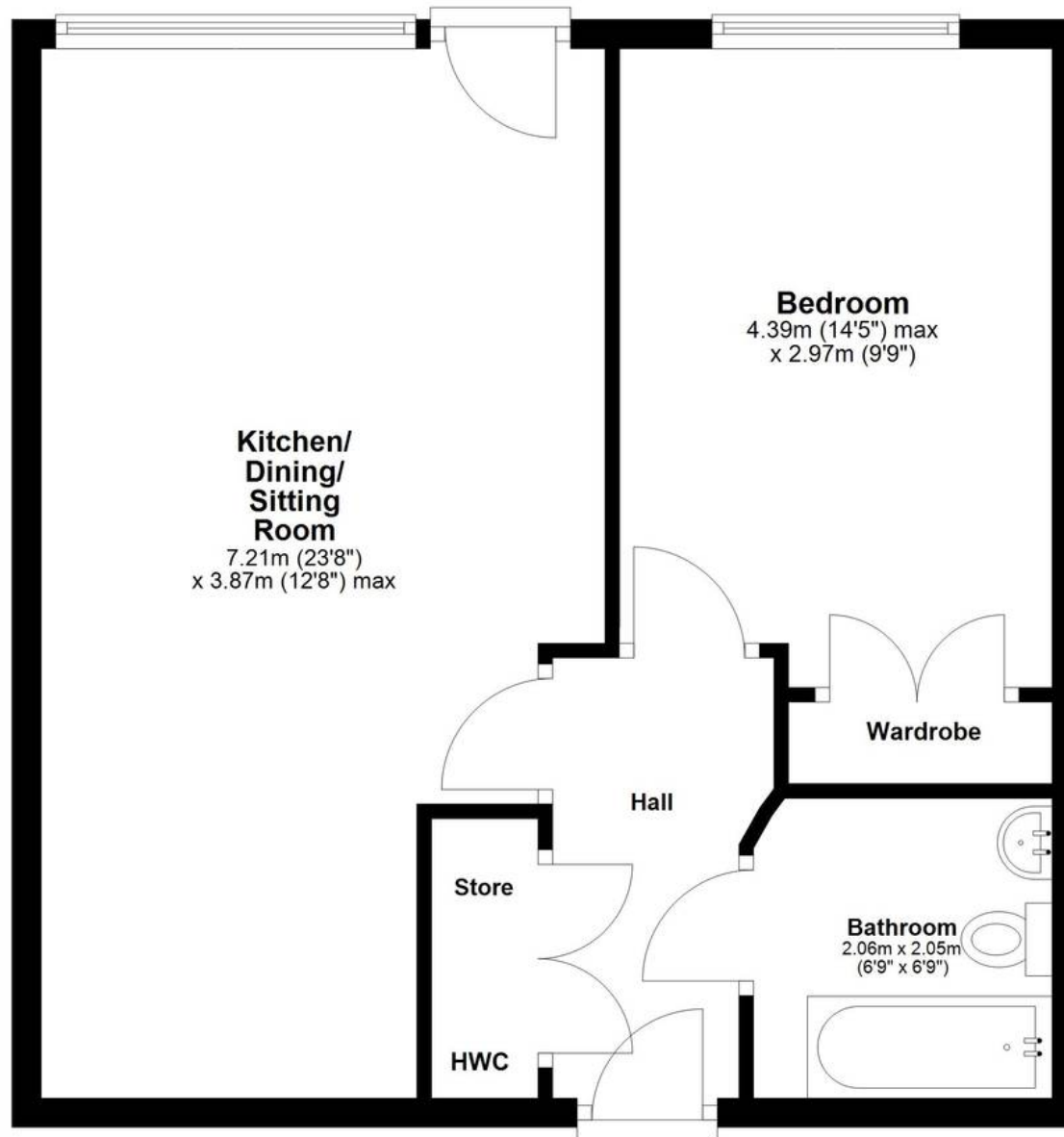
Leasehold

Council Tax band: C



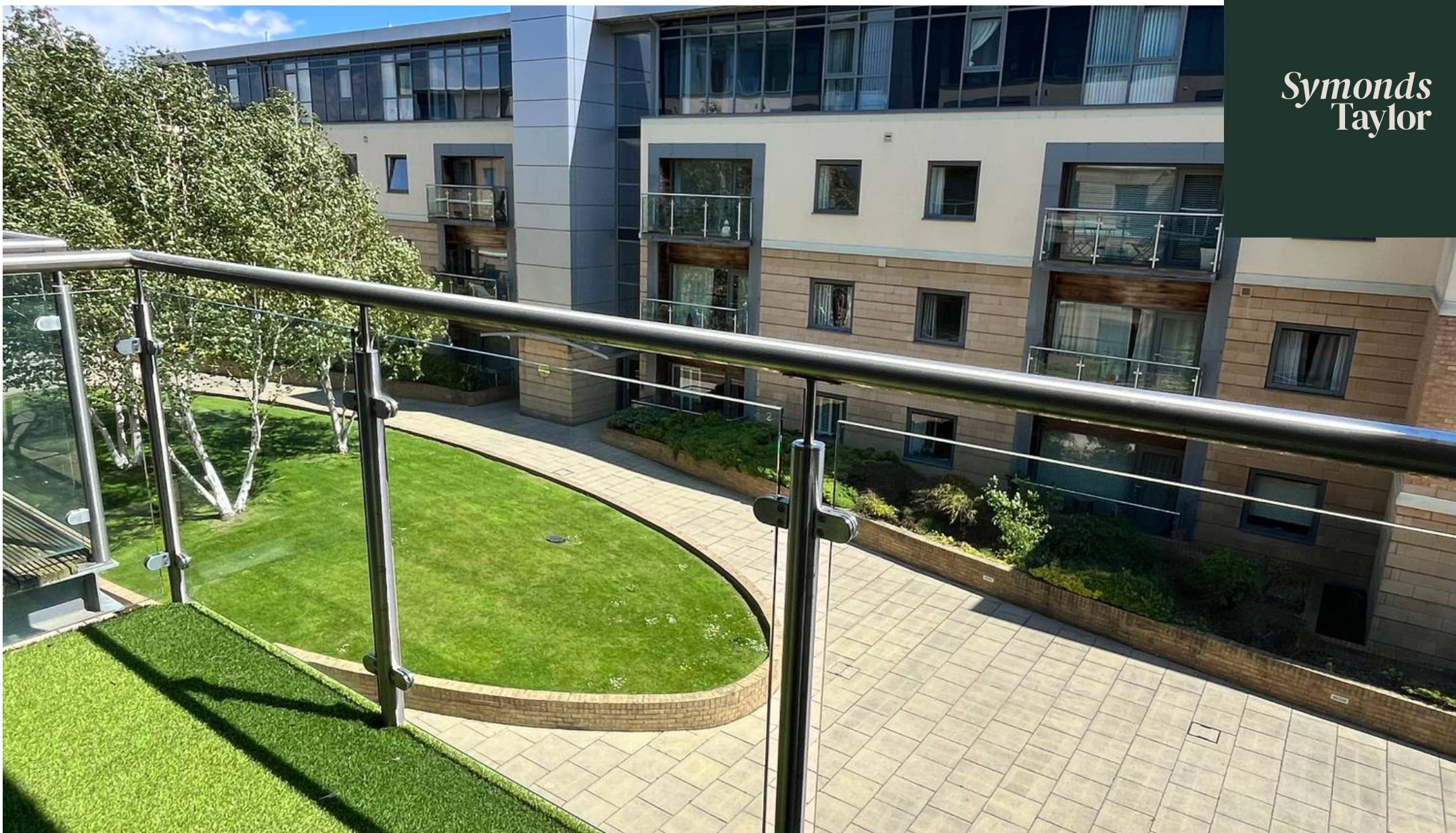
Second Floor

Approx. 50.1 sq. metres (539.7 sq. feet)



Total area: approx. 50.1 sq. metres (539.7 sq. feet)

*Symonds
Taylor*



Symonds Taylor

101 St. Georges Terrace, Jesmond - NE2 2DN

0191 338 9999 • hello@symondstaylor.co.uk • www.symondstaylor.co.uk

All descriptions, plans or references to condition are given in good faith only. Whilst every endeavour is made to ensure accuracy, please check with us on any points of especial importance to you.