

*Symonds  
Taylor*

**25 Castleton Grove, Jesmond**

Newcastle Upon Tyne

Guide Price **£1,150,000**



## 25 Castleton Grove

Jesmond, Newcastle Upon Tyne

This most impressive & unique detached family home is located in the heart of central Jesmond on the edge of Jesmond Dene, with access throughout the city, offering versatile & spacious family accommodation that will appeal to buyers both on a regional & national level.

Ground Floor: Entrance Porch, Cloakroom/WC, Hallway, Sitting Room, Dining Room, Breakfasting Kitchen, Utility Room, Master Bedroom, Dressing Room, Ensuite Bathroom, Bedroom 2, Ensuite Bathroom.

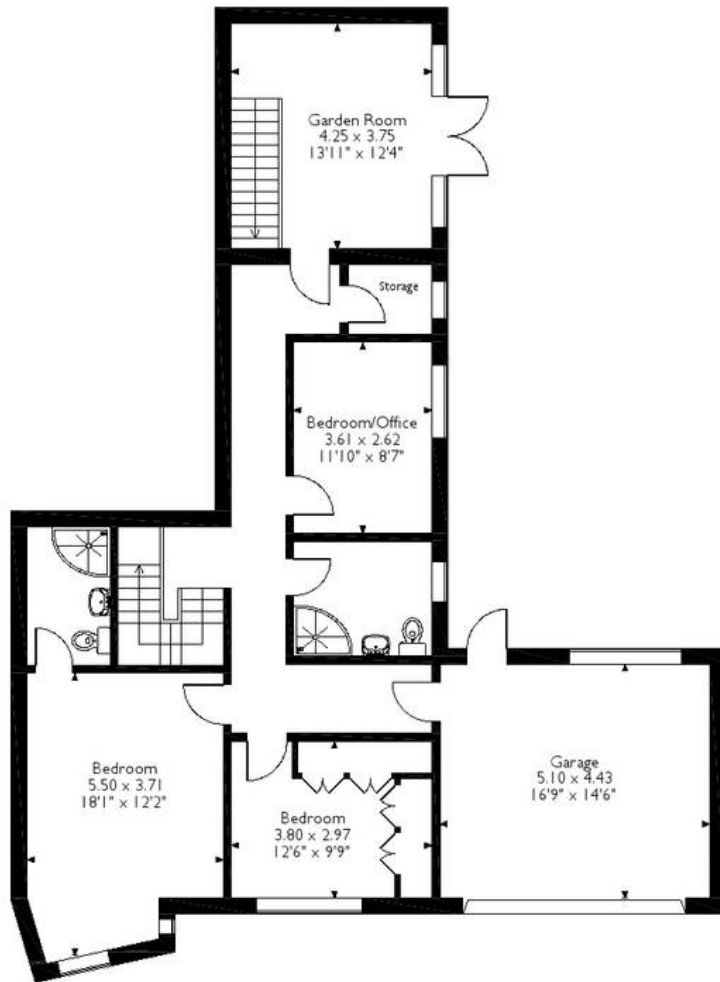
Lower Ground Floor: Split Level Conservatory/Garden Room, Inner Hallway, Bedroom 3, Ensuite Shower Room, Bedroom 4, Bedroom 5/Home Office, Shower Room, Store Room.

Outside: Front Garden, Driveway, Off Street Parking, Integral Double Garage, Side & Rear Gardens.

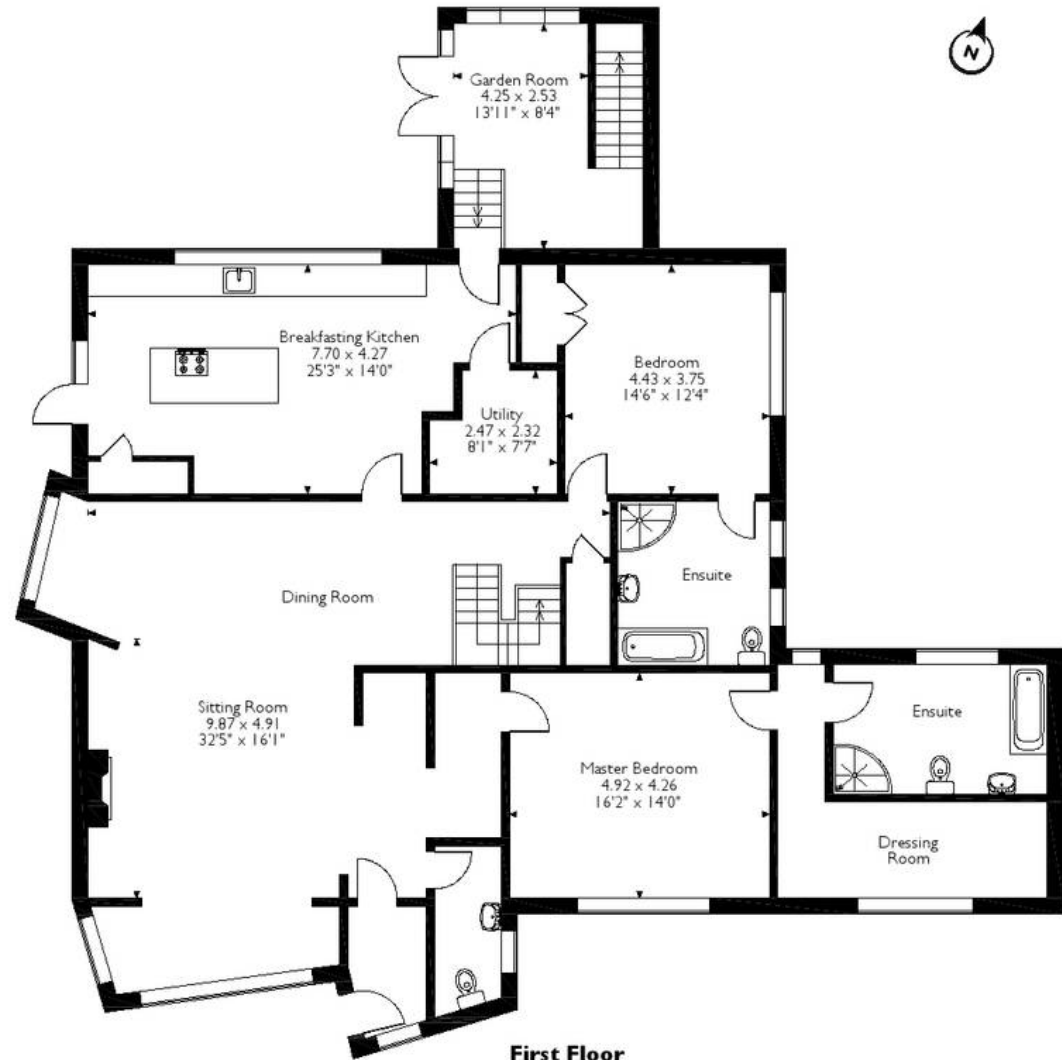
25 Castleton Grove is a most unique detached family home with versatile and generous accommodation spread over two floors that will have to be viewed to be appreciated. This family residence was built by a builder for himself and enjoys an open plan feel, especially into the reception rooms. It also has a great deal of natural light thanks to the large picture windows and makes the most of its setting within its mature plot. Heated by gas central heating, access to the house is from the front garden where a path leads up to the front door. A porchway allows access to the cloakroom/WC



25 Castleton Grove , Newcastle Upon Tyne  
Approximate Gross Internal Area  
341 Sq M/3668 Sq Ft



**Ground Floor**



**First Floor**

Please note that the location of doors, windows and other items are approximate and this floorplan is to be used for illustrative purposes only. Unauthorized reproduction is prohibited.



## **Symonds Taylor**

101 St. Georges Terrace, Jesmond - NE2 2DN

0191 338 9999 • [hello@symondstaylor.co.uk](mailto:hello@symondstaylor.co.uk) • [www.symondstaylor.co.uk](http://www.symondstaylor.co.uk)

All descriptions, plans or references to condition are given in good faith only. Whilst every endeavour is made to ensure accuracy, please check with us on any points of especial importance to you.