



2 Floors



4 Bedrooms



Utility



2 En suites

## DAWLISH FOUR BEDROOM HOME

A four bedroom detached home comprising a spacious lounge and impressive kitchen / dining / family area with French doors opening onto the rear garden. Downstairs also includes a utility, study and cloakroom. Upstairs boasts four double bedrooms and the family bathroom, complete with a bath and separate shower enclosure. Bedrooms one and two feature en-suite shower rooms with the master benefitting from fitted wardrobes.

# DAWLISH FOUR BEDROOM HOME

## DIMENSIONS

### First Floor:

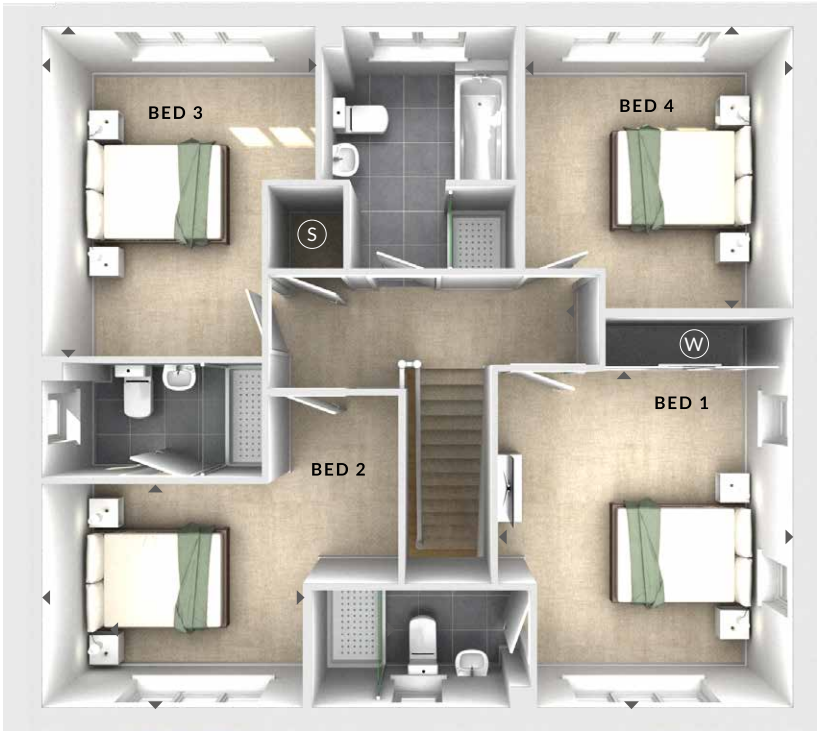
**Bedroom 1**  
3.56m x 4.06m  
11'8" x 13'4"

**En Suite**  
**Bedroom 2**  
3.14m x 2.72m  
10'4" x 8'11"

**En Suite**  
**Bedroom 3**  
3.30m x 3.98m  
10'10" x 13'0"

**Bedroom 4**  
3.23m x 3.39m  
10'7" x 11'2"

**Bathroom**



First Floor

### Ground Floor:

**Lounge**  
3.48m x 4.78m  
11'5" x 15'8"

**Kitchen / Dining / Family**  
9.07m x 3.95m  
29'9" x 13'0"

**Study**  
3.14m x 2.15m  
10'3" x 7'1"

**Utility**  
1.99m x 1.89m  
6'6" x 6'2"

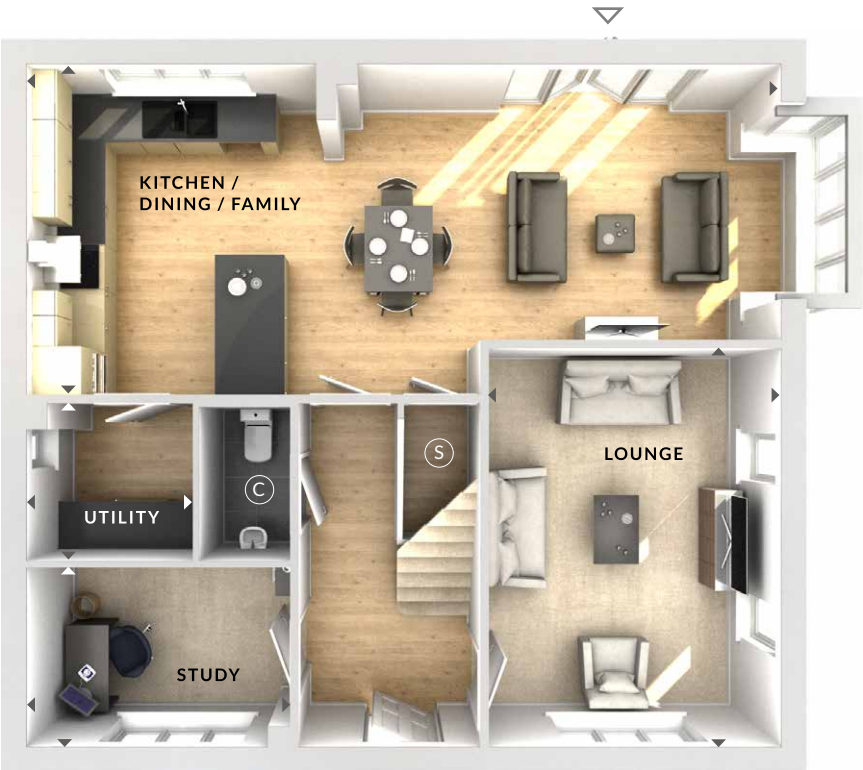
(W) Wardrobes

(S) Storage

(C) Cloaks

◀▶ Measurement Points

△ External Access



Ground Floor