



2 Floors



4 Bedrooms



Utility



1 En suite



Garage



Study

HARWOOD FOUR BEDROOM HOME

A four bedroom detached home comprising a spacious lounge and impressive kitchen / dining / family area with a bay window, both feature beautiful French doors opening onto the rear garden. Downstairs also includes a convenient utility cupboard, study and cloakroom.

Upstairs is home to the family bathroom with separate bath and shower cubicle, plus four double bedrooms. The master bedroom benefits from fitted wardrobes and an en suite shower room.

HARWOOD

FOUR BEDROOM HOME

⬢ DIMENSIONS

First Floor:

Bedroom 1

3.73m x 3.01m
12'3" x 9'10"

En Suite

Bedroom 2

3.53m x 3.66m
11'7" x 12'0"

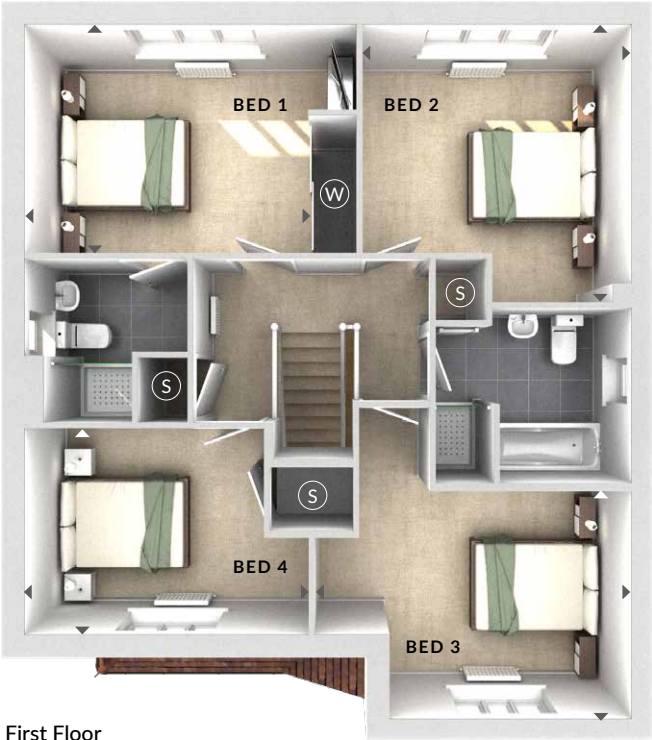
Bedroom 3

4.19m x 3.00m
13'9" x 9'10"

Bedroom 4

3.74m x 2.72m
12'3" x 8'11"

Bathroom



First Floor

Ground Floor:

Lounge

3.59m x 4.79m
11'9" x 15'8"

Kitchen/Dining/Family

4.26m x 8.05m
14'0" x 26'5"

Study

3.16m x 2.23m
10'4" x 7'4"

(W) Wardrobes

(U) Utility

(S) Storage

(C) Cloaks

◀▶ Measurement Points

△ External Access



Ground Floor