



Clwyd-y-Graig  
Cwmdu | Crickhowell | Powys | NP8 | RS





# KEY FEATURES

---

- Spectacular location with panoramic views
- Circa 8 miles from the pretty Powys town of Crickhowell
- Traditional farmhouse with much charm and character
- Gardens and grounds amounting to some 15 acres
- Separate detached agricultural barns plus wooden studio
- Idyllic rural location and yet, less than 10 minutes from A roads





# GROUND FLOOR

---

Step through the painted wooden front door into a welcoming vestibule providing access to the fabulous, light farmhouse style kitchen/dining room with painted stone walls and beams. The kitchen area comprises a range of quality, modern bespoke painted cupboards and a useful island. The granite worksurfaces contrast with the soft painted doors and wrought iron handles. A decorative tiled alcove houses a Falcon range cooker with chrome fittings and concealed cooker hood and lighting over. The kitchen has been thoughtfully designed to not only provide an aesthetically pleasing area in which to enjoy the views to the rear but to maximise the enjoyment of cooking and entertaining. To the rear of the kitchen is ample space for a substantial dining table and chairs, a half glazed door opening onto the terrace with views across the valley. Aside from the dining table there is plenty of space for a sofa or armchairs. The character of the room provides a modern ambience while preserving elements of its history including exposed timbers and painted doors with wrought iron door furniture. A door opens to a rear lobby with access to a cloakroom, useful utility and boot room and a painted wooden staircase to an open plan bedroom/study.

From the vestibule stone steps rise to an entrance hall with flagstone floor and a wide stone staircase rising to the first floor landing. Located off the entrance hall, which is full of character and charm, is a cosy snug with fireplace housing a woodburning stove set on a flagstone hearth, bespoke cupboards and book shelves are fitted in the alcoves either side of the chimney breast.

The impressive drawing room sits centrally within the farmhouse offering a place to relax, entertain or simply sit and read in a beautiful, tranquil space. A room with much character and features including quarry tiled floor, painted stone walls, exposed timbers and a stone fireplace with large wooden lintel and woodburning stove set on a flagstone hearth. A painted wooden door to the rear of the drawing room opens into a room, is either a useful store room or perhaps a cocktail pantry.

The ground floor flows as a family and entertaining space but also offers a haven of quiet and solitude.

















# SELLER INSIGHT

---

“ I find it difficult to articulate how much we love this house, the garden, the fields, hills, valley and neighbours. When we first saw the house, my wife and I and our young son were all immediately captivated by the place and we bought it straight away in 1998.

We have loved it here and have many happy memories and have had lots of fun with friends and family coming to stay. They have all shared our enthusiasm for this special place.

The house is snuggled into the hill with spectacular views out - foreground, middle ground and far distance. Over the years we have renovated and upgraded it substantially. It is now a very warm, welcoming, comfortable property with modern bathrooms, a new kitchen and a study.

Now 27 years later, we shall be very sad to leave and hope the future owners love living here as much as we have done.

\* These comments are the personal views of the current owner and are included as an insight into life at the property. They have not been independently verified, should not be relied on without verification and do not necessarily reflect the views of the agent.





















# FIRST FLOOR

---

The primary, wide stone staircase rises from the entrance hall to the first floor split level landing where the principal bedroom and bathroom are located to one side and two further bedrooms and bathroom on the opposite side. Accessed from an inner landing, the dual aspect principal bedroom suite has generous proportions with ample space for a bed, sofa, dressing table and bedroom furniture. In keeping with the style of the interior décor throughout the house, it has built in wardrobes with painted wooden doors. Adjoining the bedroom is a contemporary bathroom with both a bath and shower and fitted bathroom furniture perfect for storage. A painted wooden staircase rises from the inner landing to a room with vaulted ceiling, presently an artist's studio with light flooding through the large roof light and windows to the side elevation.

Two large bedrooms, with exposed timbers and tasteful décor are located off the main first floor landing as is a shower room with double sized walk in shower, modern in design and complemented with painted beams and traditional style wooden door. In the end bedroom there is access to a large loft space for storage.

The main landing also provides access to useful shelving for books.



























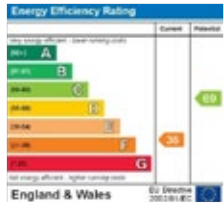








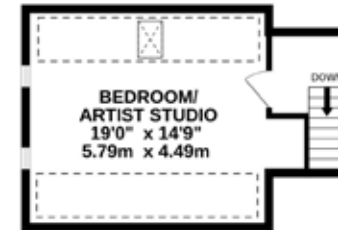




Scan to view video of the house



GROUND FLOOR  
1566 sq.ft. (145.5 sq.m.) approx.



1ST FLOOR  
1192 sq.ft. (110.7 sq.m.) approx.

FINE & COUNTRY

CLWYD-Y-GRAIG, CWMDU, CRICKHOWELL, NP8 1RS

TOTAL FLOOR AREA : 3051 sq.ft. (283.5 sq.m.) approx.

Whilst every attempt has been made to ensure the accuracy of the floorplan contained here, measurements of doors, windows, rooms and any other items are approximate and no responsibility is taken for any error, omission or mis-statement. This plan is for illustrative purposes only and should be used as such by any prospective purchaser. The services, systems and appliances shown have not been tested and no guarantee as to their operability or efficiency can be given.

Made with Metropix ©2025



All measurements, floorplans and land plans are for illustrative purposes only and are approximate. Measurements are quoted in imperial with metric equivalents and are for general guidance only. Whilst every effort has been made to ensure to accuracy, these sales particulars must not be relied upon and all information is to be verified by the solicitor acting for the buyer(s). Please note Fine & Country have not tested any apparatus or services and, therefore, no guarantee can be given that they are in working order. Photographs are shown for marketing purposes and it must not be assumed that any of the fixtures and fittings shown are included with the property, unless specifically mentioned within the sales particulars, some fixtures and fittings may be available by separate negotiation.

Copyright © Fine & Country (Monmouthshire) LLP | Registered Office: 21 Nevill Street, Abergavenny NP7 5AA | Registration Number: OC426706

FINE & COUNTRY



# OUTSIDE

---

A long, private driveway, flanked by pasture fields, continues to the farmhouse and stone agricultural barns located on opposite sides of the original farmyard with ample parking. The house and barns sit centrally in their own land with pasture fields to the front, rear and both sides, a combination of level and gently sloping land... From every aspect breathtaking views. The level, lawned garden with stone terrace, mature planting and trees adjoins the rear of the house, the terrace a perfect, private spot to enjoy all that this stunning location has to offer. The gardens and grounds amount to some 15 acres and are bordered by a brook running along the lower boundary at the entrance to the property.

## **Stone Agricultural Barns and Outbuildings:**

There are two traditional adjoining stone agricultural barns, an upper and lower barn each with their own separate entrance door. The two barns and other outbuildings are presently used for storage and as a garage but offer the opportunity, subject to any relevant planning consents, for conversion to ancillary or holiday accommodation, workshops, offices or studio. For equestrian enthusiasts, the original stables are still in situ.



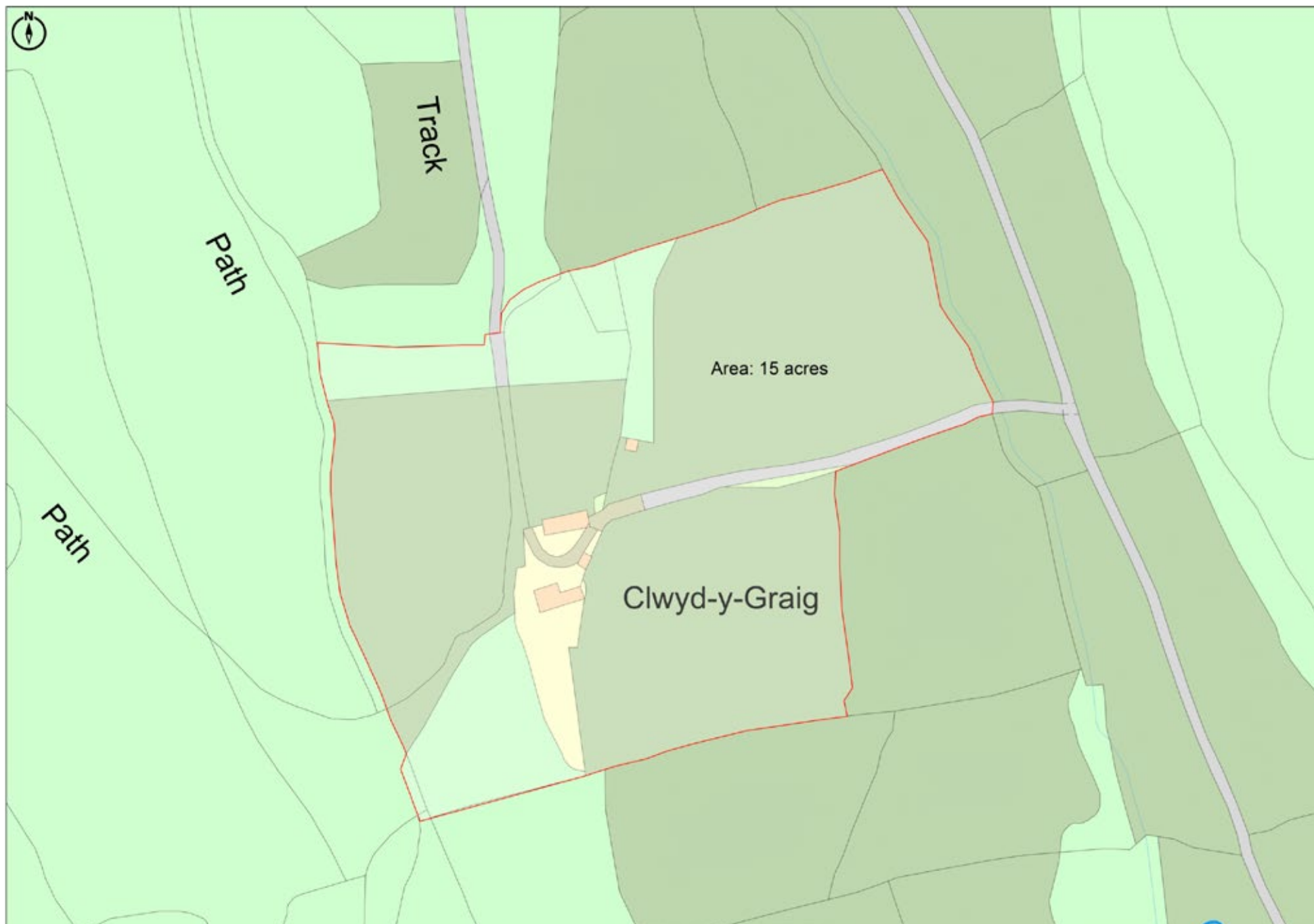




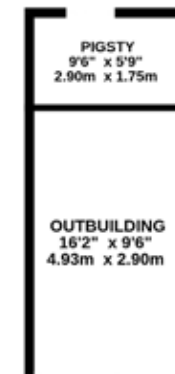












CUWYD-Y-GRAG, OUTBUILDINGS, CWMDU, NP8 1RS

TOTAL FLOOR AREA : 1355 sq.ft. (125.9 sq.m.) approx.

Whilst every attempt has been made to ensure the accuracy of the floorplan contained here, measurements of doors, windows, rooms and any other items are approximate and no responsibility is taken for any error, omission or mis-statement. This plan is for illustrative purposes only and should be used as such by any prospective purchaser. The services, systems and appliances shown have not been tested and no guarantee as to their operability or efficiency can be given.  
Made with Metropix 02025



# INFORMATION

---



**Guide Price:** £1,250,000

**Local Authority:** Powys County Council.

**Council Tax Band:** F. Please note that the Council Tax banding was correct as at date property listed. All buyers should make their own enquiries.

**EPC Rating:** F. To view the full EPC please visit [www.gov.uk](http://www.gov.uk)

Notes to accompany the EPC:

- The Entrance Hall and Snug has a pitched roof and had a pitched pine panel ceiling internally which 27 years ago was covered over with insulation and plasterboard.
- The study/bedroom 4, was refurbished in 2020. All windows are double glazed and the pitched roof was renewed and fully insulated.
- The artist's studio has not been renovated by the current owners and is the only part of the house where there has not been roof insulation added. The studio floor provides insulation to the first floor principal bedroom suite below.
- The two first floor bedrooms situated off the main first floor landing were renovated in 2018. A loft space is accessible via a ceiling trapdoor in the end bedroom. The floor area of the loft has been insulated and insulation was also added to the interior surface of the roof between the eaves.
- The walls are original sandstone construction and in most places are about 3 foot thick, constructed of large internal and external facing blocks with rubble infill between. They are exceptionally well insulated, cool in summer and once the rooms are heated in winter, they retain the heat very well.

**Tenure:** Freehold.

**Services:** We are advised that the property is connected to mains electricity. Oil fired central heating system, private water supply and private septic tank drainage.

**Broadband:** The current owners' broadband is beamed from a mast above Cwmdru and their current provider is Voneus Ltd. This provides a superior broadband to that provided by Openreach. A hard-wired mesh network has been installed in the house, which distributes, through a single network a stable wifi coverage throughout the property.

**Mobile:** EE is variable indoors, both EE and Three are good outdoors. O2 and Vodafone are unlikely indoors and outdoors. Please make your own enquiries via Ofcom.

**Title:** The property is registered under Title Number WA871245 – copies of which are available from Fine & Country.

**Agent's Notes:** As is the case with many agricultural buildings, the roofs of the stone barns may contain some asbestos.

The neighbouring farmer has access to his adjacent fields across the lower field. A bridle path runs up the driveway, through the yard and up to the common land. Grazing rights on Clwyd-y-Graig to graze on the common land above the property, noted as 61 sheep or 12 cattle or 12 ponies or a combination thereof.

A covenant restricts the use of the surrounding land, owned by the neighbouring farmer, to agricultural purposes.

Please note all information will need to be verified by the buyers' solicitor and is given in good faith from information both obtained from HMRC Land Registry and provided by our sellers.





# LOCAL AREA

---

The village of Cwmdu is located in the heart of the Brecon Beacons / Bannau Brycheiniog National Park, an area renowned for its outstanding natural beauty. It is a popular and attractive village with a church, community-run public house, cafe and village hall which is the focus of various community events. The surrounding countryside, particularly the Black Mountains, offer stunning scenery with superb walks, riding and cycling routes. There are excellent road links for commuting with easy access to the A40/A479 for links to the M4/M5 and M50 motorways and the A465 for the Heads of the Valleys/Pembrokeshire. A mainline railway station is located on the fringe of Abergavenny with connections to the cities of Bristol, Cardiff and Hereford, London Paddington can be reached in less than 3 hours.

Crickhowell (8 miles) is a thriving, pretty town on the Powys/Monmouthshire border located on the banks of the River Usk. The town is renowned for its individual shops including butchers, bakers and greengrocers and an independent country store. Other amenities include a library, doctors and dentists' surgeries, restaurants, post office, petrol station and a primary and secondary school. Crickhowell is well known for tourism and events including an annual walking festival, the town has won a number of awards for its High Street and voted by the Sunday Times as one of the top places to live in Wales.





## LOCAL AREA

---

The picturesque village of Tretower (2.5 miles), in the Brecon Beacons / Bannau Brycheiniog National Park, is situated between Crickhowell and Talgarth. It has the remains of Tretower Court and Castle which is a popular visitor attraction and managed by CADW. The elaborate castle, with ornamental stonework was once a strong defensive building and a splendid home until it was succeeded by the Court.

The market town of Abergavenny (12 miles) and Brecon (13) offer a range of amenities including high street and independent shops, primary and secondary schools, doctors, dentists, a library, theatre and cinema. Abergavenny plays host to markets and events throughout the year, including the popular annual Food Festival which attracts around 20,000 visitors to the event each September.

The charming market town of Hay-on-Wye, renowned for the famous Hay Festival and its literary connections and book shops is situated on the English / Welsh border is approximately 17 miles away, the town has some interesting independent shops and a number of places to eat.



# FINE & COUNTRY

Fine & Country is a global network of estate agencies specialising in the marketing, sale and rental of luxury residential property. With offices in over 300 locations, spanning Europe, Australia, Africa and Asia, we combine widespread exposure of the international marketplace with the local expertise and knowledge of carefully selected independent property professionals.

Fine & Country appreciates the most exclusive properties require a more compelling, sophisticated and intelligent presentation – leading to a common, yet uniquely exercised and successful strategy emphasising the lifestyle qualities of the property.

This unique approach to luxury homes marketing delivers high quality, intelligent and creative concepts for property promotion combined with the latest technology and marketing techniques.

We understand moving home is one of the most important decisions you make; your home is both a financial and emotional investment. With Fine & Country you benefit from the local knowledge, experience, expertise and contacts of a well trained, educated and courteous team of professionals, working to make the sale or purchase of your property as stress free as possible.

*We value the little things  
that make a home*

THE FINE & COUNTRY  
FOUNDATION



## BEN WATKINS

PARTNER MNAEA MARLA

Fine & Country Abergavenny & Crickhowell  
Office: +44(0)1873 736 515  
Mobile: +44(0)7718 491568  
E-mail: [ben.watkins@fineandcountry.com](mailto:ben.watkins@fineandcountry.com)

Ben started his career in lettings before transferring over to property sales when he was asked to head up an office in Monmouthshire. As a business, we pride ourselves on the quality of our marketing, our attention to detail, passion for customer service and our experience not only to find a buyer for a property but to see the transaction through to completion. Estate Agency is a changing world, we are very forward thinking, embrace change and strive to be ahead of the curve. Being part of Fine & Country offers the best of both worlds – a global company with outstanding marketing and social media presence combined with intimate knowledge of the local area and a showroom situated in a prime location in Abergavenny. Outside of the business, my leisure time is spent running up a local mountain, in the gym or enjoying outdoor activities with my two young children.



## HEATHER COOK

PARTNER MNAEA AssocRICS

Fine & Country Abergavenny & Crickhowell  
Office: +44(0)1873 736 515  
Mobile: +44(0)7809 832 528  
E-mail: [heather.cook@fineandcountry.com](mailto:heather.cook@fineandcountry.com)

Heather started her estate agency career in the 1990s. In 2004 Heather joined an estate agency in Abergavenny which held the Fine & Country Licence for the Abergavenny and Crickhowell area. Within a short space of time, Heather purchased her business Partner's shares and she and her team have grown the brand over the past 18 years. Heather is passionate about the business and enjoys working with sellers and buyers from the very beginning of their journey until the keys are finally handed over. Heather loves property.... whether a beautiful period townhouse, a contemporary home or a rural property with land. Heather enjoys the outdoors, walking her dogs through the beautiful countryside of the Brecon Beacons National Park and also, practicing yoga, going open water swimming and more recently, learning to paddleboard.





follow Fine & Country Abergavenny & Crickhowell on



Fine & Country Abergavenny & Crickhowell  
21 Nevill Street, Abergavenny, Monmouthshire NP7 5AA  
+44(0)1873 736 515 | [abergavenny@fineandcountry.com](mailto:abergavenny@fineandcountry.com)

