



Flat (EPC Rating: D)

FLAT 4, RIVERSIDE LODGE WILTON, HR9 6AA

£950 Per Month



2 Bedroom Flat located in Wilton

| 2 Bedrooms | Bathroom | Kitchen | Living Room | Second Floor | Rent Inclusive Of Heating And Water Rates | Council Tax Band B | EPC Rating D | Available For Immediate Occupation Subject To Referencing And Landlords Consents

The Property

This second floor flat comprises of 2 bedrooms, living room, kitchen and bathroom.

More photos, details and floor plan to follow.

Affordability And Household Income

To qualify for the income requirements when applying for this property our referencing company require proof of a minimum household income of £28,500.

Should a guarantor be required to support an application, an income of £34,200 would be required.

Services And Expenditure

Services - Mains electricity, drainage and water.

Council Tax - Band B

Broadband Connectivity - 2300Mbps Download.
2300Mbps Upload - Ultrafast - Source Ofcom

Tenancy Information And Permitted Payments

For information and payments in relation to the property please follow the Tenancy Information link. This can be found above or below the asked rent when visiting Rightmove, On The Market and Zoopla. If viewing on our own website this information can be found by selecting Tenant Guide from the To Let drop down menu.

Viewings

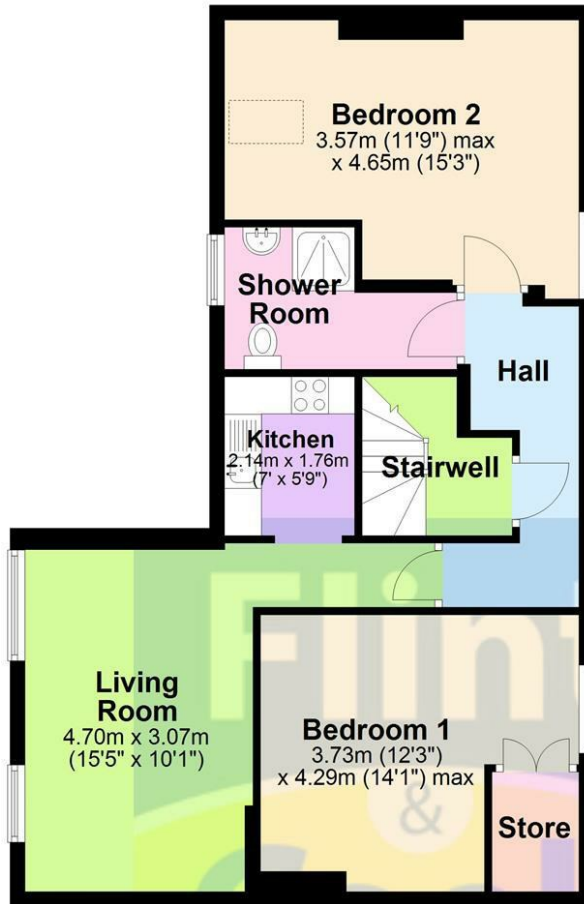
Viewings are strictly through the agent. To book a viewing please call our lettings department 01432 355455



FLINT AND COOK HEREFORD LETTINGS | 22 BROAD STREET, HEREFORD,
HEREFORDSHIRE, HR4 9AP

Second Floor

Approx. 63.9 sq. metres (688.0 sq. feet)

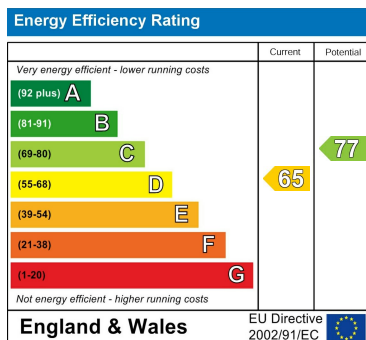


Total area: approx. 63.9 sq. metres (688.0 sq. feet)

Council Tax Band

B

Energy Performance Graph



Call us on

01432 355455

lettings@flintandcook.co.uk

<https://www.flintandcook.co.uk/>

Agents Note: Whilst every care has been taken to prepare these particulars, they are for guidance purposes only. All measurements are approximate and are for general guidance purposes only and whilst every care has been taken to ensure their accuracy, they should not be relied upon and potential buyers are advised to recheck the measurements.

