



Apartment (EPC Rating: C)

29 FROME COURT, BARTESTREE, HR1 4DX

£795 Per month



1 Bedroom Apartment located in Bartestree

| Well Presented Apartment | Popular Location | One Bedroom | Ensuite Facilities | Open Plan Kitchen / Sitting Room | Allocated Parking | EPC Rating C |

The Property

Forming part of the popular Frome Court Development this well presented apartment offers entrance hallway, open plan sitting room / kitchen, a double bedroom and ensuite bathroom. The open plan kitchen area / sitting room has windows to the rear offering elevated views over the immediate area and countryside beyond. The kitchen offers a selection of base and wall mounted cabinets, a four ring gas hob, double oven, integrated fridge, plumbing for washing machine, sink, splashback wall tiling and vinyl flooring. The sitting area offers a good space for a three piece suite and area for small compact dining table. The double bedroom offers a window to rear with views and built in double wardrobes. The ensuite has WC, pedestal wash hand basin, panel enclosed bath with shower over, extractor fan and vinyl flooring. There is allocated parking for one vehicle along with parking available for visitors.

Services And Expenditure

Services - Mains electricity, drainage and water. Mains gas central heating.

Council Tax - Band B

Broadband Connectivity - 80Mbps Download. 20Mbps Upload - Superfast - Source Ofcom

Affordability And Household Income

To qualify for the income requirements when applying for this property our referencing company require proof of a minimum household income of £23,850. Should a guarantor be required to support an application, an income of £28,620 would be required.

Tenancy Information And Permitted Payments

For information and payments in relation to the property please follow the Tenancy Information link. This can be found above or below the asked rent when visiting Rightmove, On The Market and Zoopla. If viewing on our own website this information can be found by selecting Tenant Guide from the To Let drop down menu.

Viewings

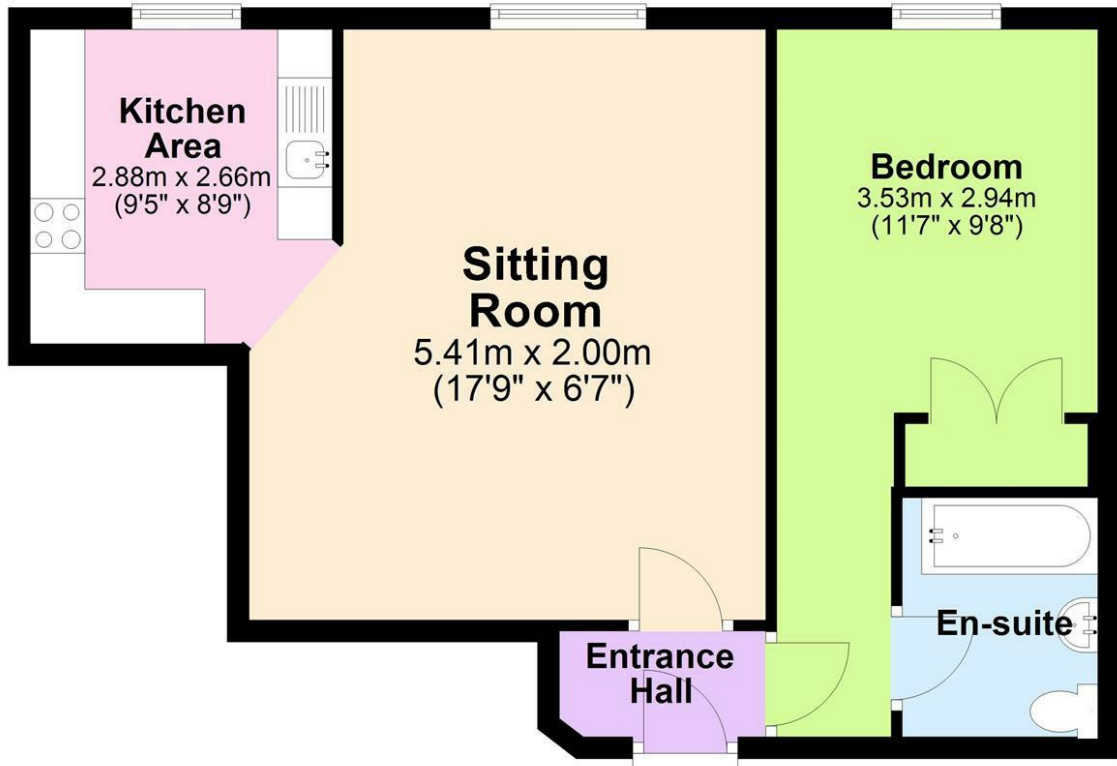
Viewings are strictly through the agent. To book a viewing please call our lettings department 01432 355455



FLINT AND COOK HEREFORD | 22 BROAD STREET, HEREFORD,
HEREFORDSHIRE, HR4 9AP

Ground Floor

Approx. 52.2 sq. metres (561.4 sq. feet)



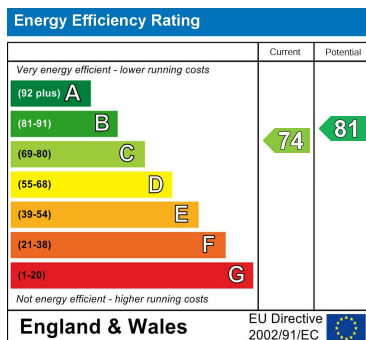
Total area: approx. 52.2 sq. metres (561.4 sq. feet)

This plan is for illustrative purposes only
Plan produced using PlanUp.

Council Tax Band

B

Energy Performance Graph



Call us on

01432 355455

lettings@flintandcook.co.uk

<https://www.flintandcook.co.uk/>

Agents Note: Whilst every care has been taken to prepare these particulars, they are for guidance purposes only. All measurements are approximate and are for general guidance purposes only and whilst every care has been taken to ensure their accuracy, they should not be relied upon and potential buyers are advised to recheck the measurements.

