



South Loop Park, Birmingham

£485,000


AZURE
RESIDENTIAL

Key Features

- Canal-facing four-bedroom townhouse
- Arranged over three well-designed floors
- Two en-suite bedrooms plus family bathroom
- Two private balconies and canal-side patio
- Open-plan kitchen/living space with island
- Floor-to-ceiling windows and excellent natural light



*Rare canal-facing four-bedroom townhouse in South Loop Park.
Arranged over three floors with two en-suite bedrooms, two
private balconies, and a canal-side patio. Prime B16 location
near Brindleyplace, Five Ways, and the city centre.*





A rare opportunity to purchase an impeccably presented, canal-facing townhouse within one of Birmingham’s most desirable modern developments.

Arranged over three beautifully designed floors, this four-bedroom, three-bathroom home offers an exceptional blend of space, style, and versatility. With two en-suite bedrooms, two private balconies, and a private canal-side patio, the property delivers a lifestyle rarely found in city living.

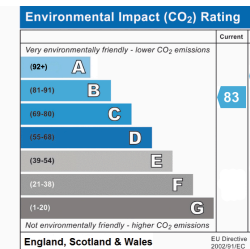
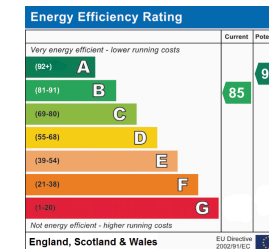
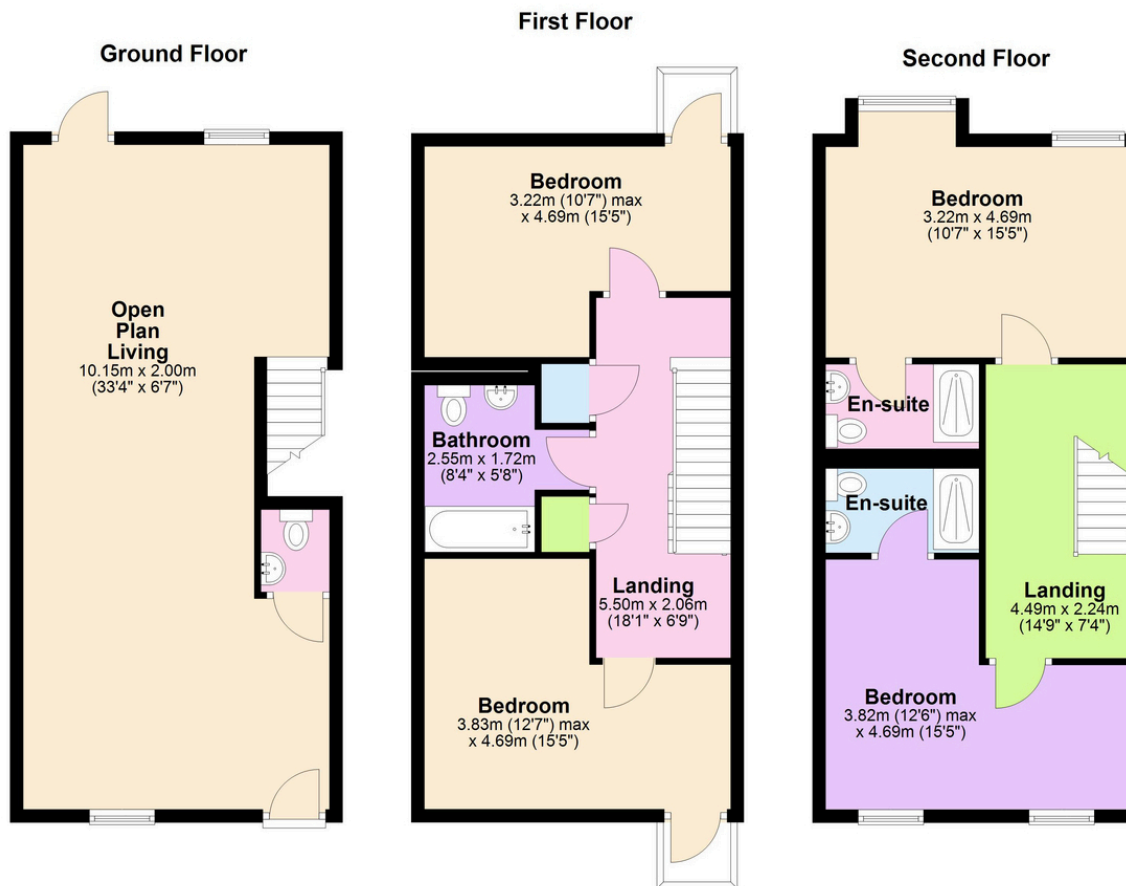
The ground floor centres around a striking open-plan kitchen and living space, designed with both everyday living and entertaining in mind. The kitchen features integrated appliances, sleek cabinetry, and a generous island, while floor-to-ceiling windows flood the space with natural light and open directly onto the canal-facing patio — a perfect spot for relaxing or hosting. A stylish guest WC completes this level.

The first floor hosts two spacious bedrooms, each enjoying access to a private balcony, alongside a contemporary family bathroom.

The second floor is dedicated to two luxurious en-suite bedrooms, offering excellent privacy and comfort. Both rooms benefit from built-in storage and elegant en-suite shower rooms finished to a high specification.

Located in South Loop Park, the property enjoys a prime B16 position, within easy reach of Brindleyplace, Five Ways, and





Tenure Type: Freehold
Council Tax Band: E
Council Authority: Birmingham City