



Suffolk Street Queensway, Birmingham,
B1 1



Stunning 12th-floor 2-bed, 2-bath apartment in Westside One with breathtaking panoramic views of Birmingham's skyline. Recently refurbished with new flooring and stylish bathrooms. Includes allocated parking.



Key Features

- 12th-floor apartment with breathtaking panoramic city views
- Recently refurbished with new flooring & modern bathrooms
- Two spacious bedrooms & two stylish bathrooms
- Allocated parking space
- Prime city-centre location near top amenities & transport links
- Excellent Concierge Service









Stunning 2-Bed, 2-Bath Apartment with Breathtaking City Views – Westside One, Birmingham

Perched on the 12th floor of the highly sought-after Westside One development, this exceptional two-bedroom, two-bathroom apartment offers sensational panoramic views of Birmingham's skyline. With iconic landmarks such as The Rotunda, The Mailbox, Grand Central, and The Council House all visible from your windows, this is city living at its finest.

The apartment has been furnished to an impeccable standard, featuring new flooring throughout and recently refitted bathrooms that exude modern elegance. The spacious open-plan living area is flooded with natural light, creating the perfect space for relaxation or entertaining. The open plan kitchen provides plenty of worksurface space and benefits from integrated appliances.

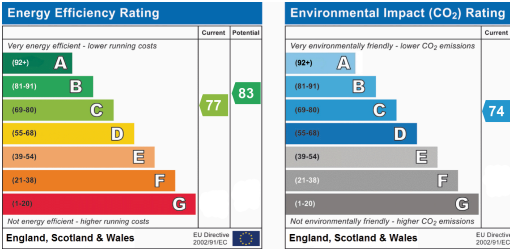
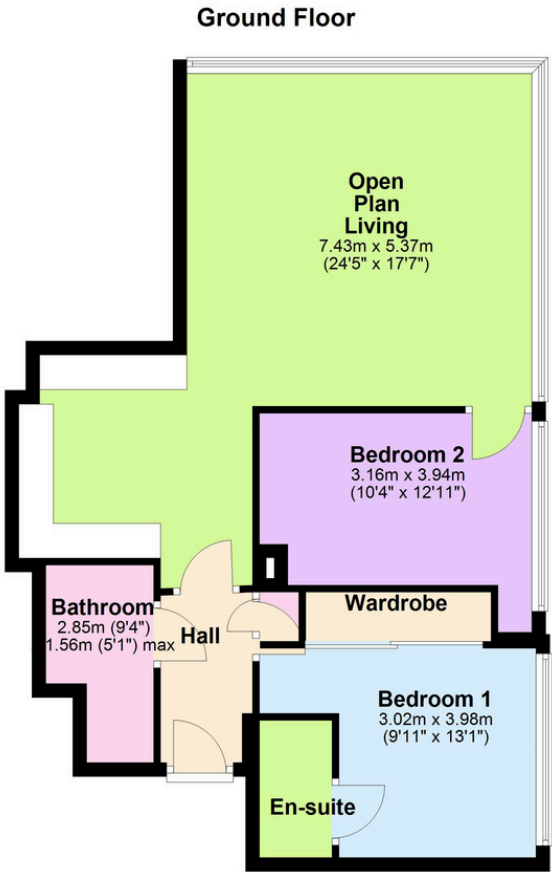
Additional benefits include an allocated parking space, secure entry, and a prime location just moments from Birmingham's best dining, shopping, and transport links.

A rare opportunity to own a beautifully upgraded apartment in one of the city's most desirable locations. Contact us today to arrange a viewing!









Tenure Type: Leasehold
Council Tax Band: F
Council Authority: Birmingham City

