




2 BUDDLE VILLAS  
OFFERS OVER £165,000

MILLER TOWN & COUNTRY  
exp<sup>UK</sup>



## 3 Bed Cottage SHEEPWASH

-  3 Bedrooms
-  2 Bathrooms
-  2 Reception Rooms
-  EPC Rating E (43)



- » Mid-Terrace Cottage
- » 3 Bedrooms
- » Open Plan Kitchen/Living Room
- » Pretty Rear Garden
- » Store Room/Workshop Space
- » Popular Village Location
- » NO ONWARD CHAIN

## The Property

This mid-terrace cottage offers spacious accommodation in a quintessential village location. It is presented in sound order but is ready for a new owner to renovate and put their own stamp on. On the ground floor, entrance is through a handy porch which brings you into the open plan kitchen and dining room. This room features a cosy solid fuel range situated in a brick surround fireplace. The separate sitting room has generous proportions and a fireplace with electric fire. At the back of the property is a shower room with w/c and access to the rear garden. A separate store room has bags of potential and could be used as a utility room, workshop or home office. Upstairs are 2 double bedrooms, a single bedroom and a bathroom. Outside the mature garden has established trees & shrubs, lawn & shed. There are lovely views over open countryside from the property and the pretty front courtyard is the perfect place to sit and enjoy a coffee in the sun.

## Location

Sheepwash is a pretty Devon village in picturesque countryside with a friendly community, and the property is ideally located for easy access to the village square and its highly regarded public house with integrated village shop. Primary schooling is available nearby in the villages of Highampton and Black Torrington, where there is also a doctors surgery. The north coast at Bude and its sandy beaches are around 30 minutes away, and the wilds of Dartmoor can be reached in as little as 20 minutes.

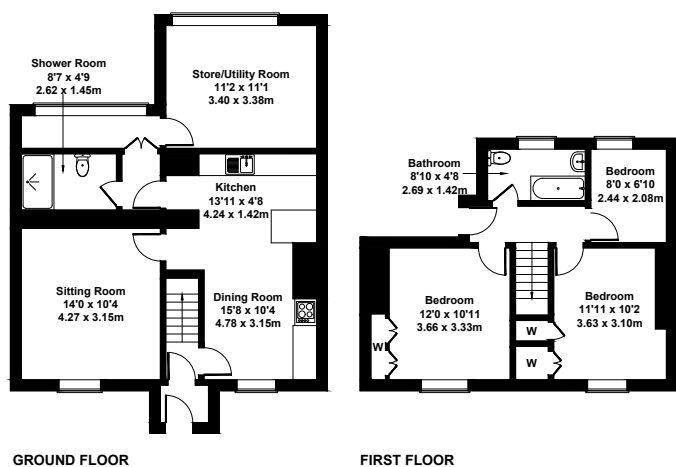
**Agents Note:** Please note that the garden will need to be divided in to 2 separate spaces.

There is a small section of flying freehold associated with this property.



### 2 Buddle Villas

Approximate Gross Internal Area  
1227 sq ft - 114 sq m



Not to Scale. Produced by The Plan Portal 2025  
For Illustrative Purposes Only.



Miller Town & Country | 01837 54080

2 Jacob's Pool House, 11 West Street, Okehampton, EX20 1HQ

okehampton@millertc.co.uk | www.millertc.co.uk

